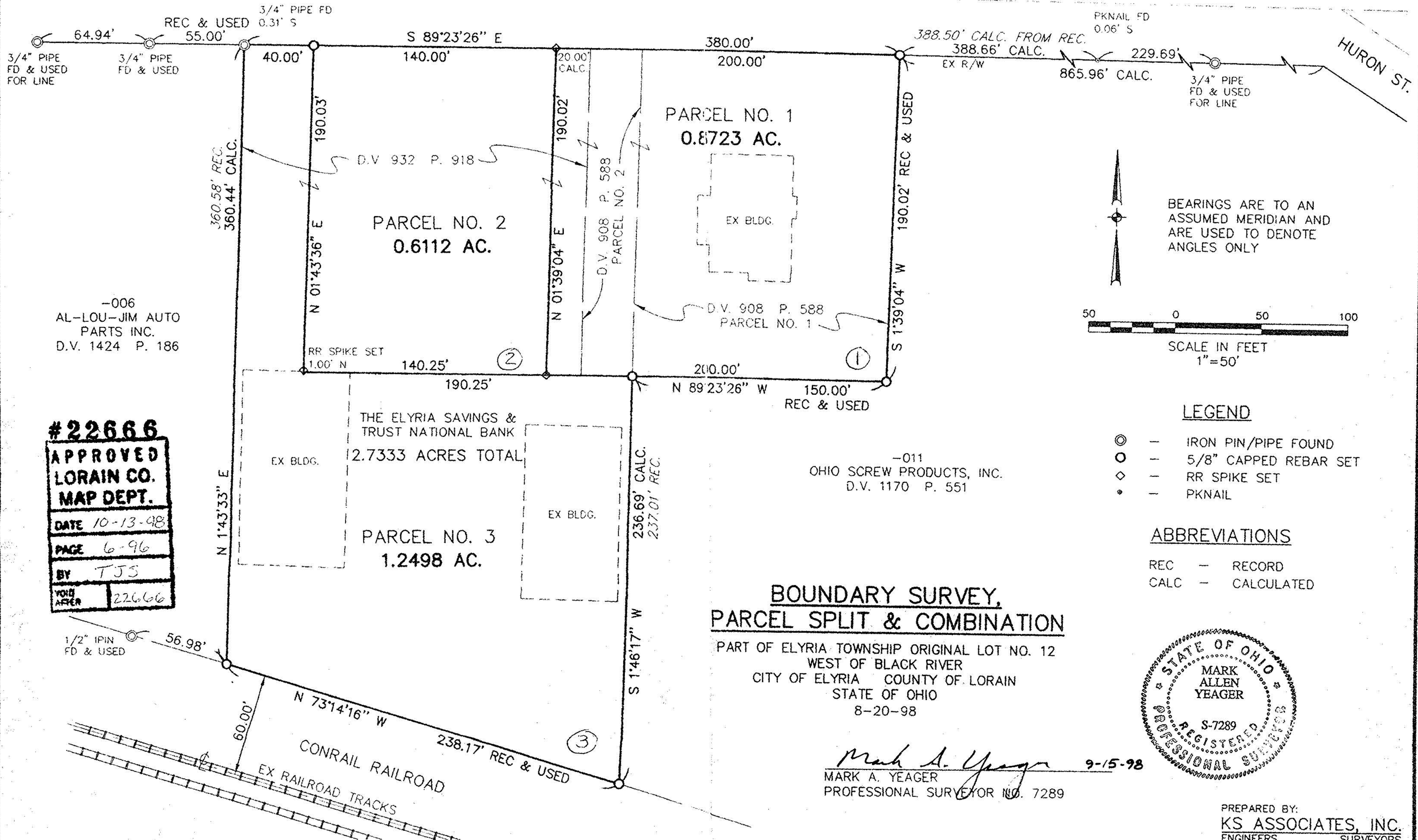


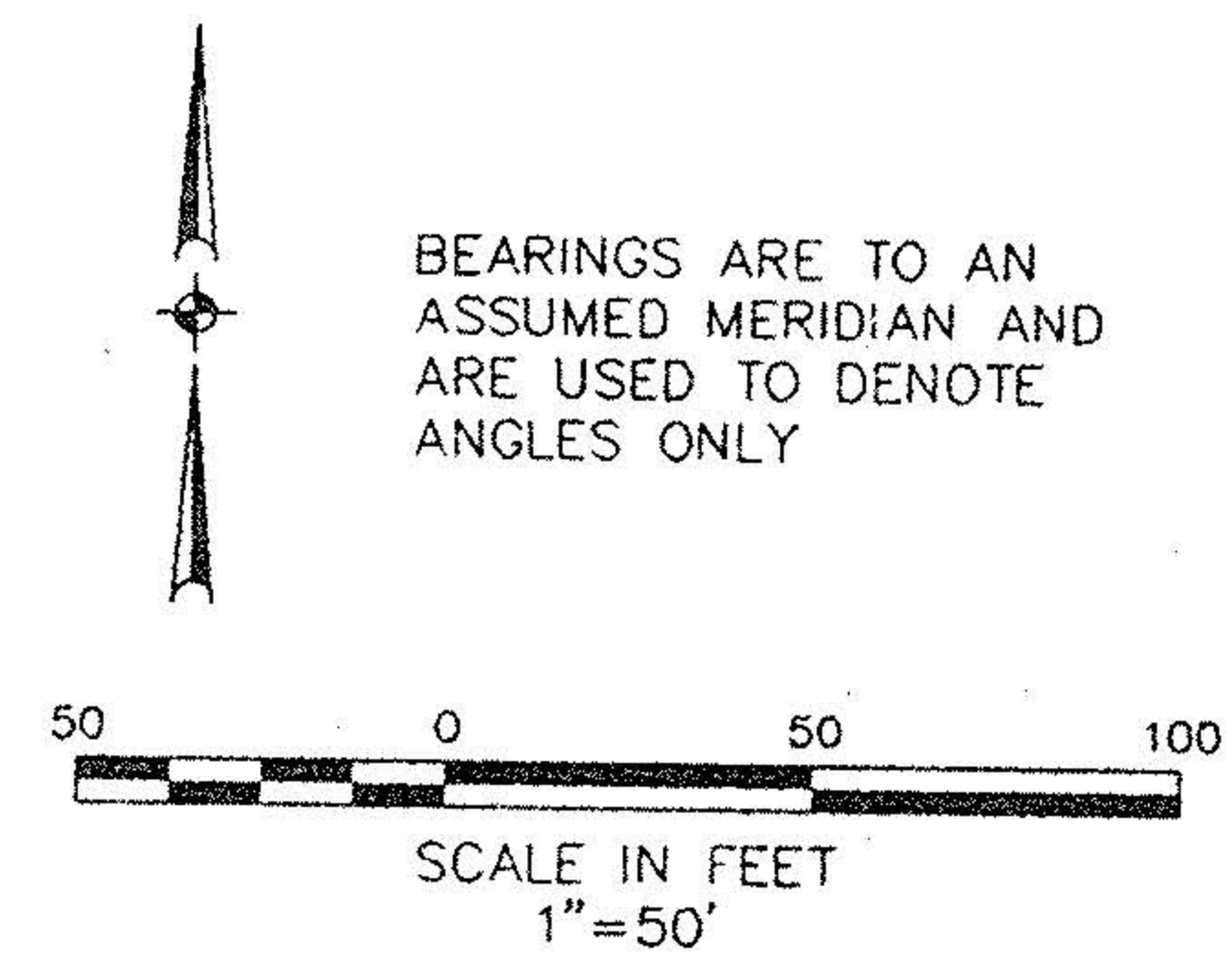
LOWELL STREET

66'



-006
AL-LOU-JIM AUTO
PARTS INC.
D.V. 1424 P. 186

#22666
APPROVED
LORAIN CO.
MAP DEPT.
DATE 10-13-98
PAGE 6-96
BY TJS
VOID AFTER 22666



BEARINGS ARE TO AN ASSUMED MERIDIAN AND ARE USED TO DENOTE ANGLES ONLY

- LEGEND**
- ⊙ — IRON PIN/PIPE FOUND
 - — 5/8" CAPPED REBAR SET
 - ◇ — RR SPIKE SET
 - — PKNAIL

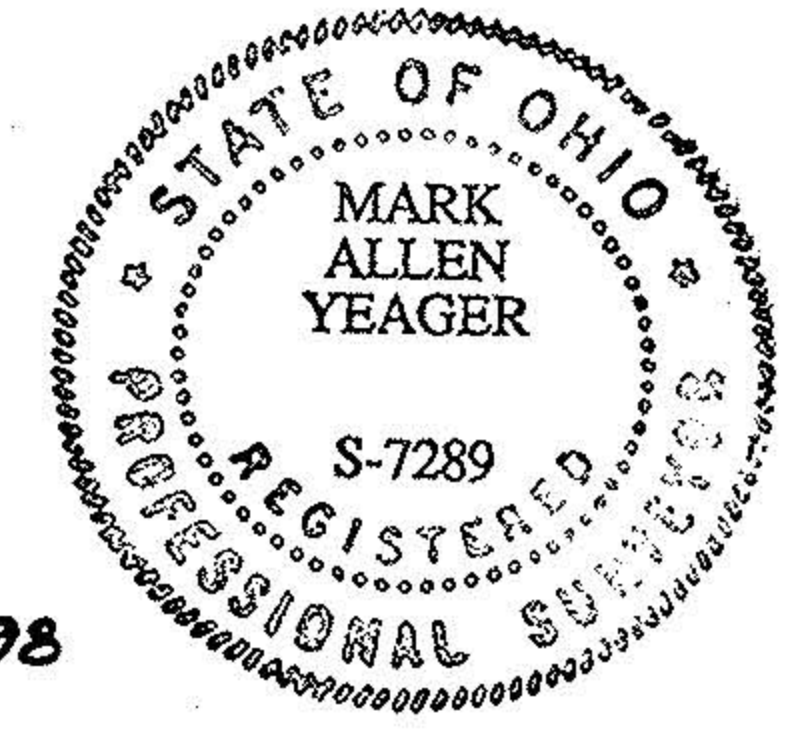
ABBREVIATIONS

- REC — RECORD
- CALC — CALCULATED

BOUNDARY SURVEY, PARCEL SPLIT & COMBINATION

PART OF ELYRIA TOWNSHIP ORIGINAL LOT NO. 12
WEST OF BLACK RIVER
CITY OF ELYRIA COUNTY OF LORAIN
STATE OF OHIO
8-20-98

Mark A. Yeager 9-15-98
MARK A. YEAGER
PROFESSIONAL SURVEYOR NO. 7289



PREPARED BY:
KS ASSOCIATES, INC.
ENGINEERS SURVEYORS