

6-97-98

-076-000

LOWELL STREET 66'

(FORMERLY "WEST STREET")

# BOUNDARY SURVEY

PART OF ELYRIA TOWNSHIP ORIGINAL LOTS NOS 11, 95, & 96

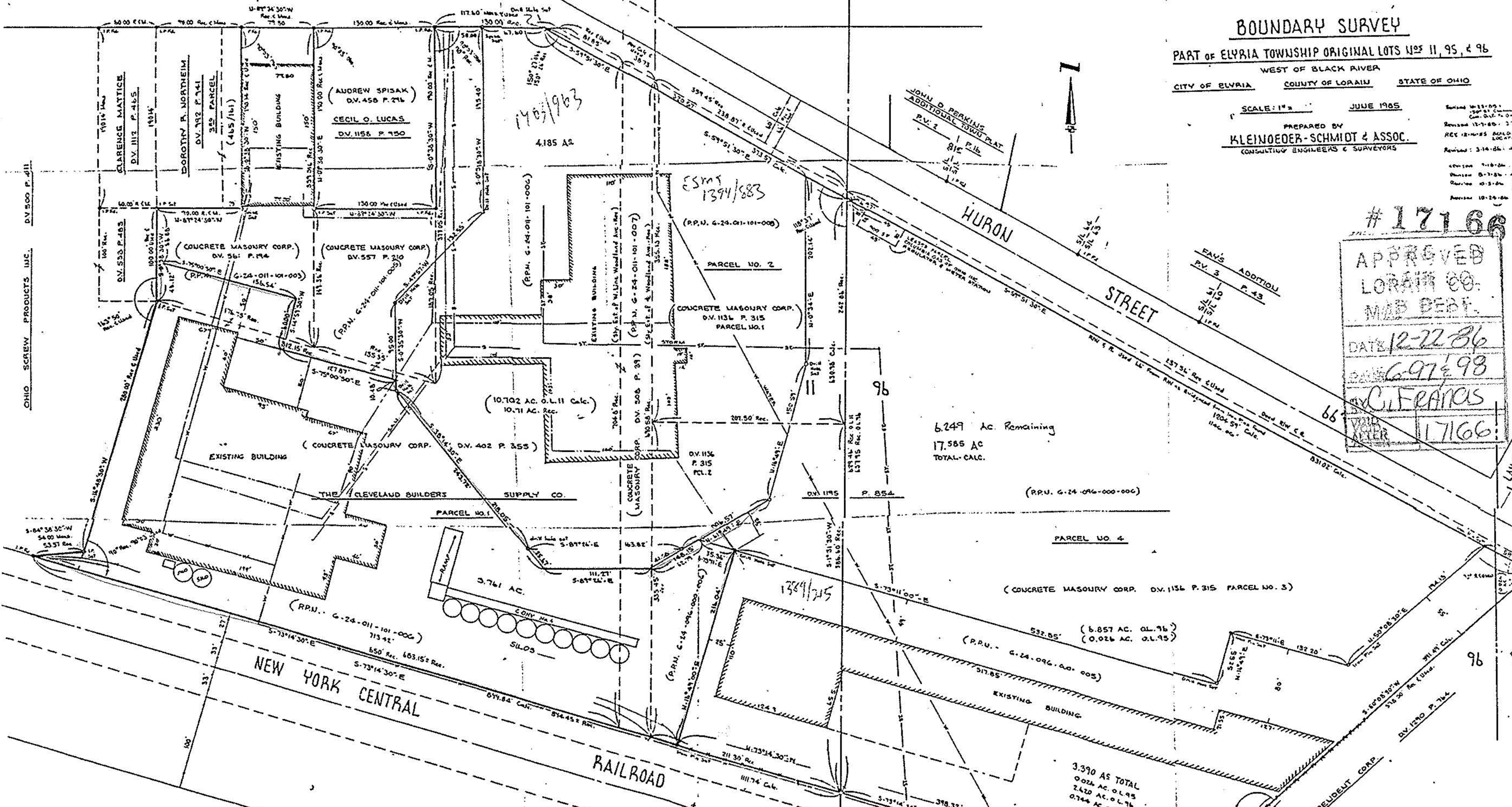
WEST OF BLACK RIVER

CITY OF ELYRIA COUNTY OF LORAIN STATE OF OHIO

SCALE: 1" = 40' JUNE 1985

PREPARED BY  
**KLEINHOEDER-SCHMIDT & ASSOC.**  
CONSULTING ENGINEERS & SURVEYORS

Revised 12-1-85  
REVISED 12-1-85  
REVISED 12-1-85  
REVISED 12-1-85  
REVISED 12-1-85  
REVISED 12-1-85  
REVISED 12-1-85  
REVISED 12-1-85  
REVISED 12-1-85  
REVISED 12-1-85



#17166  
APPROVED  
LORAIN CO.  
MAB BEBL  
DATE 12-22-86  
6-97-98  
C. FRANCIS  
17166

OHIO SCREW PRODUCTS INC. DV. 500 P. 411

LAND