

#19564  
 APPROVED  
 LORAIN CO.  
 MAP DEPT.  
 DATE 9-20-91  
 PAGE 6-130  
 BY C. E. FRANCIS  
 VOID AFTER 1956A

13.893 AC  
 [(2/3) 32.678 AC = 11.226 AC]  
 ELYRIA INDUSTRIAL RESOURCES CO.  
 D.V. 1386 P. 34 PCL. 2

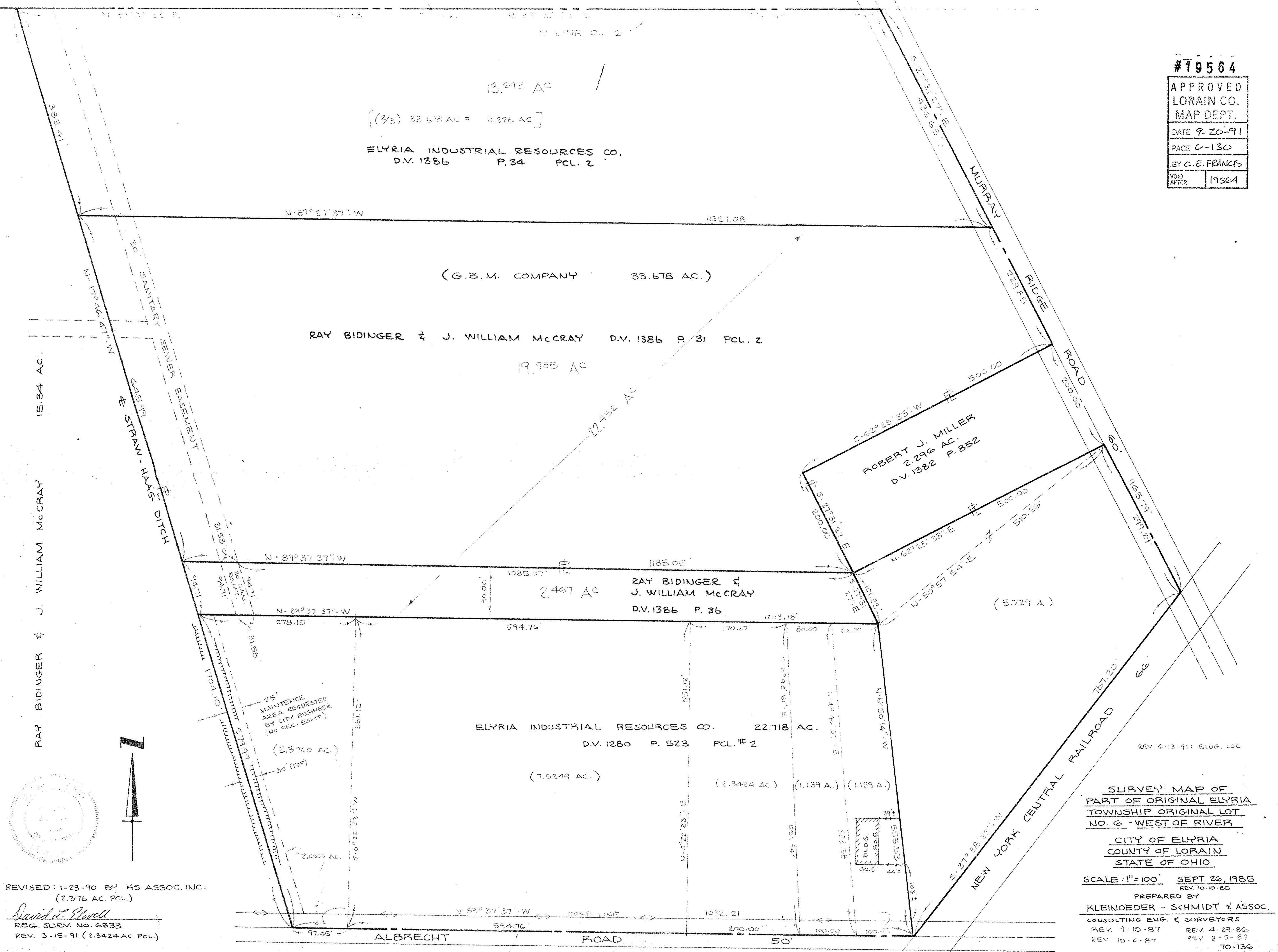
(G.B.M. COMPANY 33.678 AC.)

RAY BIDINGER & J. WILLIAM McCRAY D.V. 1386 P. 31 PCL. 2  
 19.985 AC

ROBERT J. MILLER  
 2.296 AC.  
 D.V. 1382 P. 852

RAY BIDINGER & J. WILLIAM McCRAY  
 D.V. 1386 P. 36  
 2.467 AC

ELYRIA INDUSTRIAL RESOURCES CO. 22.718 AC.  
 D.V. 1280 P. 523 PCL. # 2  
 (7.9249 AC.) (2.3424 AC) (1.139 A.) (1.139 A.)



REVISED: 1-23-90 BY KS ASSOC. INC.  
 (2.376 AC. PCL.)  
 David L. Howell  
 REG. SURV. NO. 6333  
 REV. 3-15-91 (2.3424 AC. PCL.)

SURVEY MAP OF  
 PART OF ORIGINAL ELYRIA  
 TOWNSHIP ORIGINAL LOT  
 NO. 6 - WEST OF RIVER  
 CITY OF ELYRIA  
 COUNTY OF LORAIN  
 STATE OF OHIO  
 SCALE: 1"=100' SEPT. 26, 1985  
 REV. 10-10-85  
 PREPARED BY  
 KLEINOEDER - SCHMIDT & ASSOC.  
 CONSULTING ENG. & SURVEYORS  
 REV. 7-10-87 REV. 4-29-86  
 REV. 10-6-87 REV. 8-5-87  
 70-136