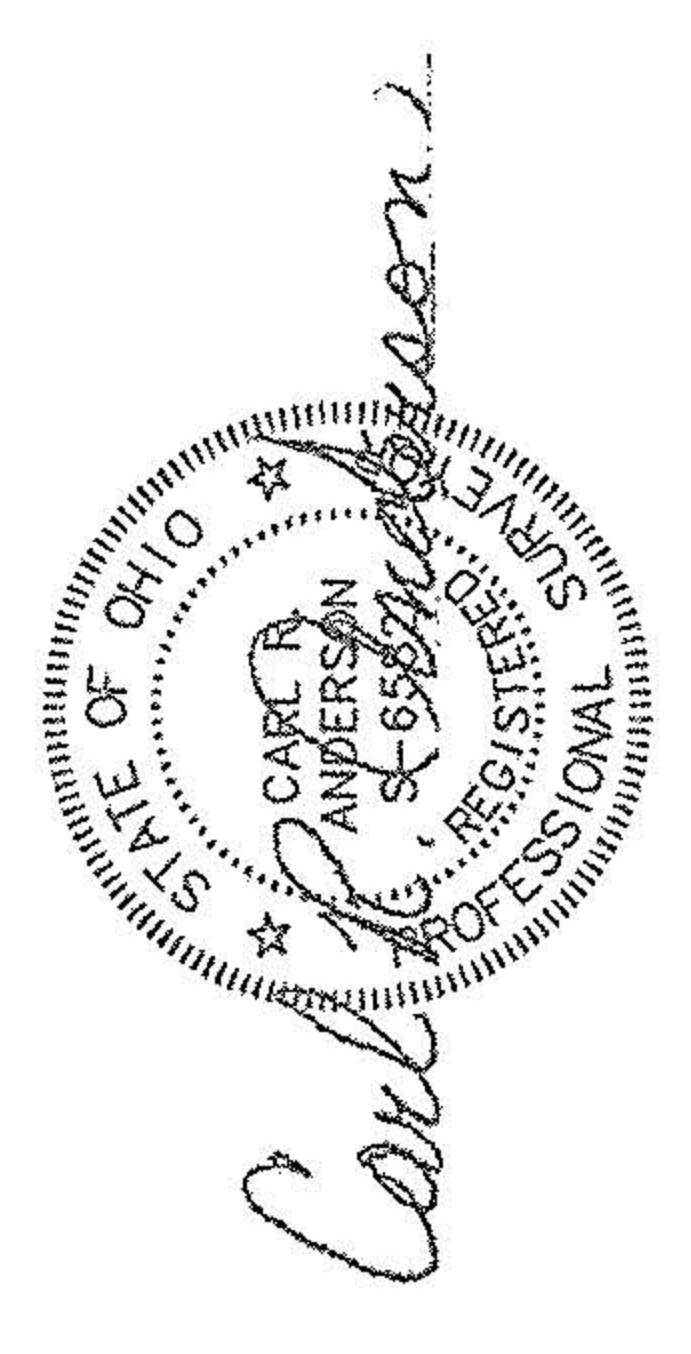


BOUNDARY SURVEY
 CITY OF ELYRIA LORAIN COUNTY
 STATE OF OHIO
 PART OF ORIGINAL ELYRIA TOWNSHIP LOTS 14 & 15
 WEST OF THE RIVER
 AS RECORDED IN O.R. VOL. 1467, PG. 463
 06-24-015-000-045

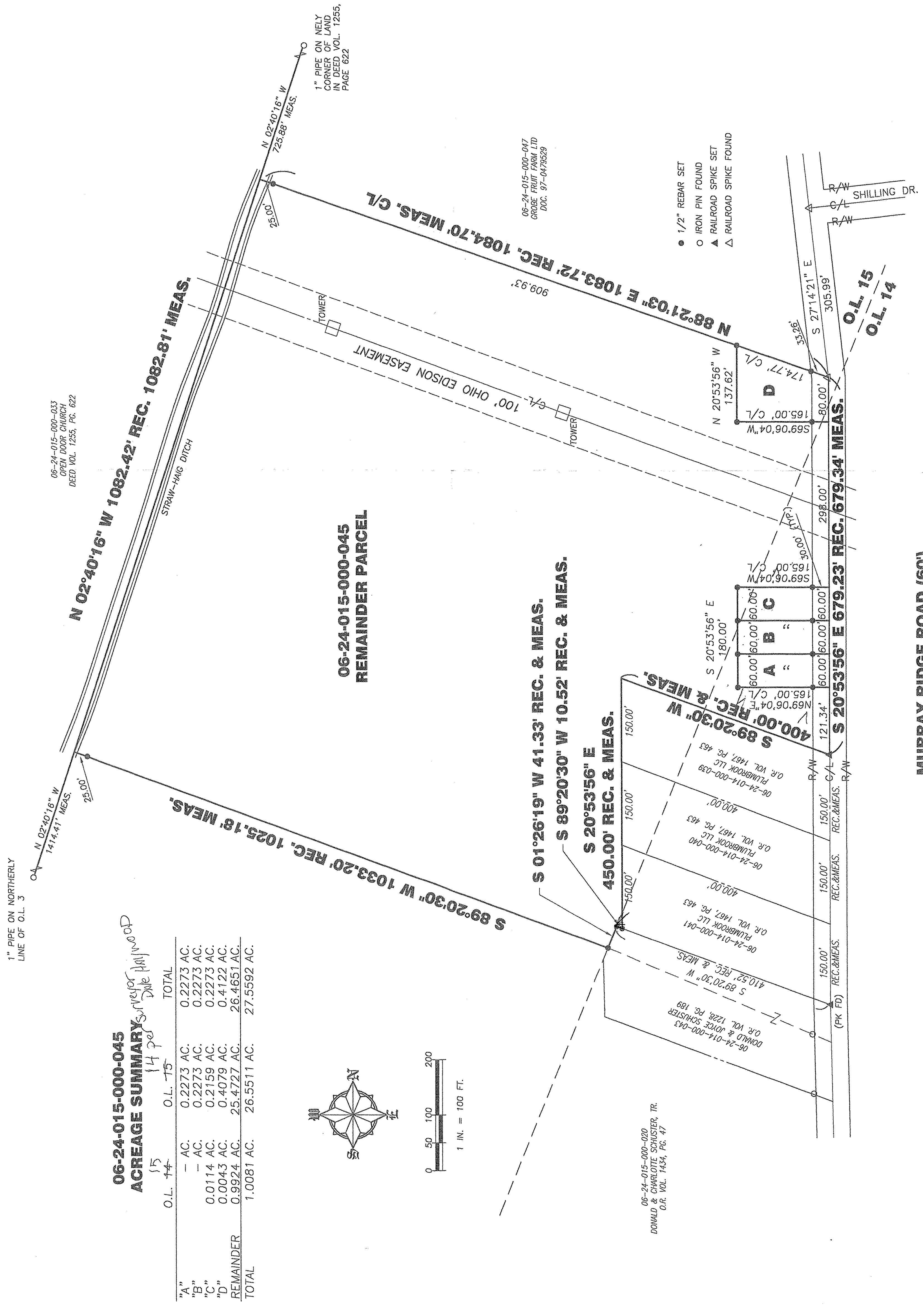
SITUATED IN THE CITY OF ELYRIA, COUNTY OF LORAIN, STATE OF OHIO AND BEING PART OF ORIGINAL ELYRIA TOWNSHIP LOTS 14 & 15, WEST OF THE RIVER, I CERTIFY THAT AT THE REQUEST OF THE OWNERS I HAVE SURVEYED AND PLATTED THE LANDS SHOWN HEREON. ALL MEASUREMENTS ARE IN FEET AND DECIMAL PARTS THEREOF. ANGLES ARE TO AN ASSUMED MERIDIAN AND ARE USED TO DESCRIBE ANGLES ONLY.



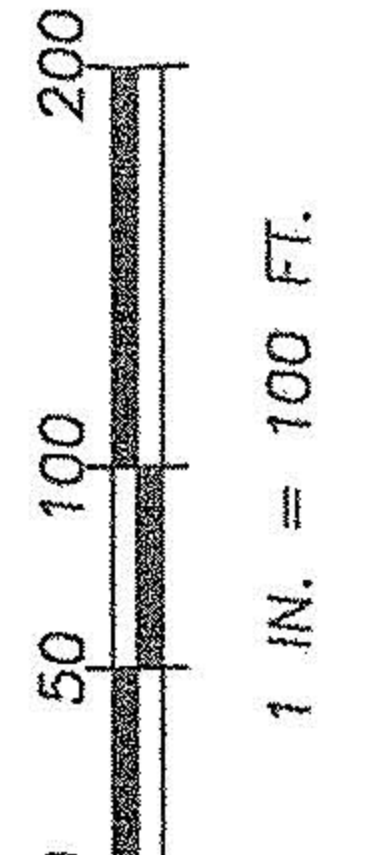
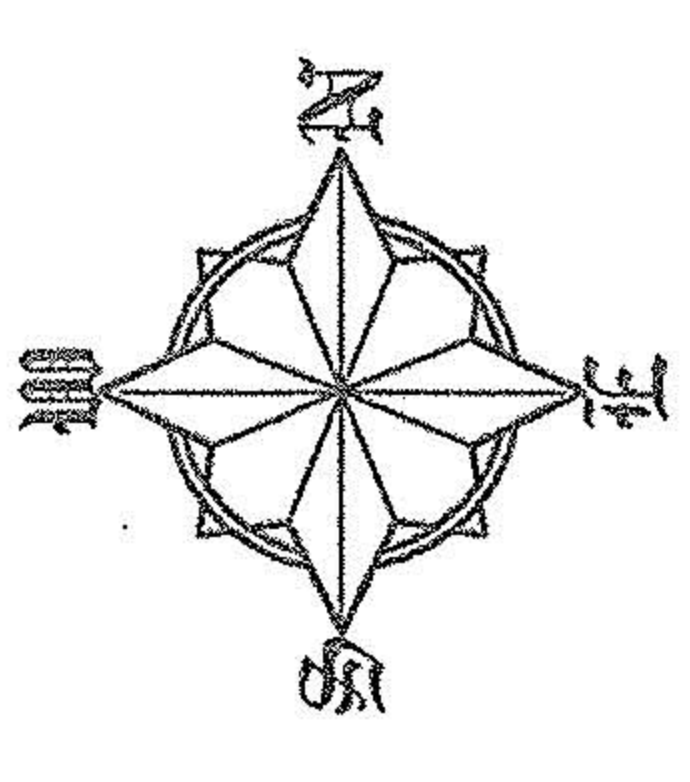
PREPARED BY
 HAYWOOD CIVIL ENGINEERING
 630 CLEVELAND STREET
 ELYRIA, OHIO 44035
 (440) 365-9831
 (440) 365-3426 FAX

PREPARED FOR
 SPRINGBROOK LTD
 33488 LIBERTY PARKWAY
 NORTH RIDGEVILLE, OHIO 44039
 (440) 327-3030
 (440) 327-3071 FAX

Haywood
 CIVIL ENGINEERING
 & LAND SURVEYING
 ELYRIA, OHIO



06-24-015-000-033
 OPEN DOOR CHURCH
 DEED VOL. 1255, PG. 622



06-24-015-000-045
ACREAGE SUMMARY
 14 parcels of Dale Haywood

O.L. #	AC.	TOTAL
"A"	0.2273 AC.	0.2273 AC.
"B"	0.2273 AC.	0.2273 AC.
"C"	0.2159 AC.	0.2273 AC.
"D"	0.4079 AC.	0.4122 AC.
REMAINDER	25.4727 AC.	26.4651 AC.
TOTAL	1.0081 AC.	27.5592 AC.

06-24-015-000-020
 DONALD & CHARLOTTE SCHUSTER, TR.
 O.R. VOL. 1454, PG. 47

MURRAY RIDGE ROAD (60')