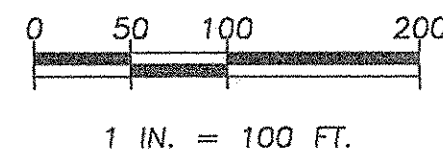
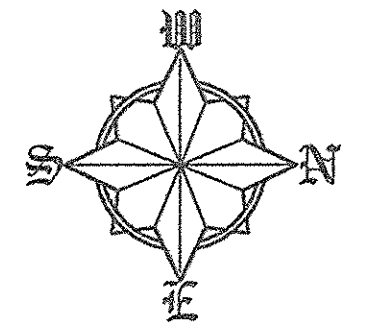


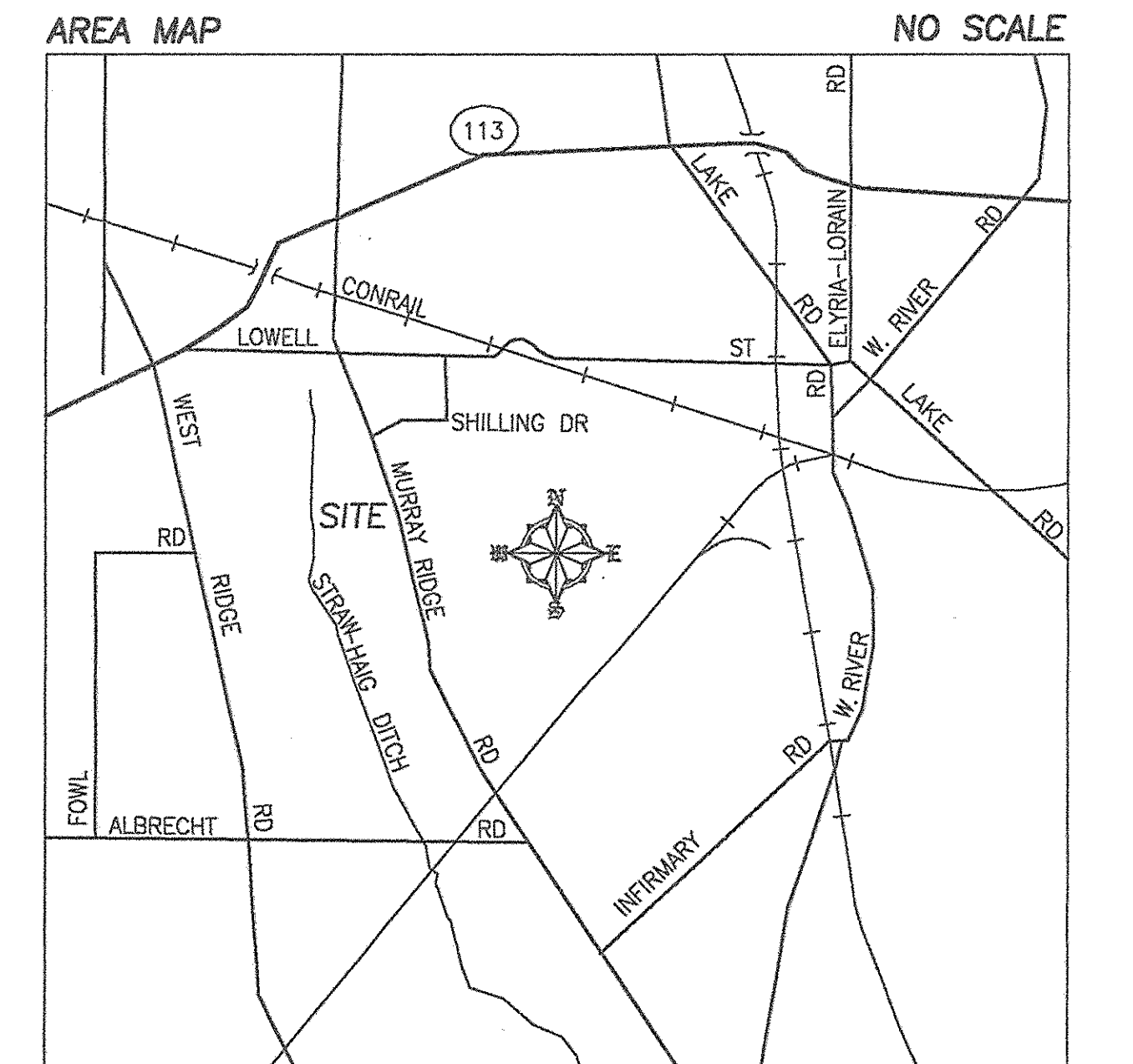
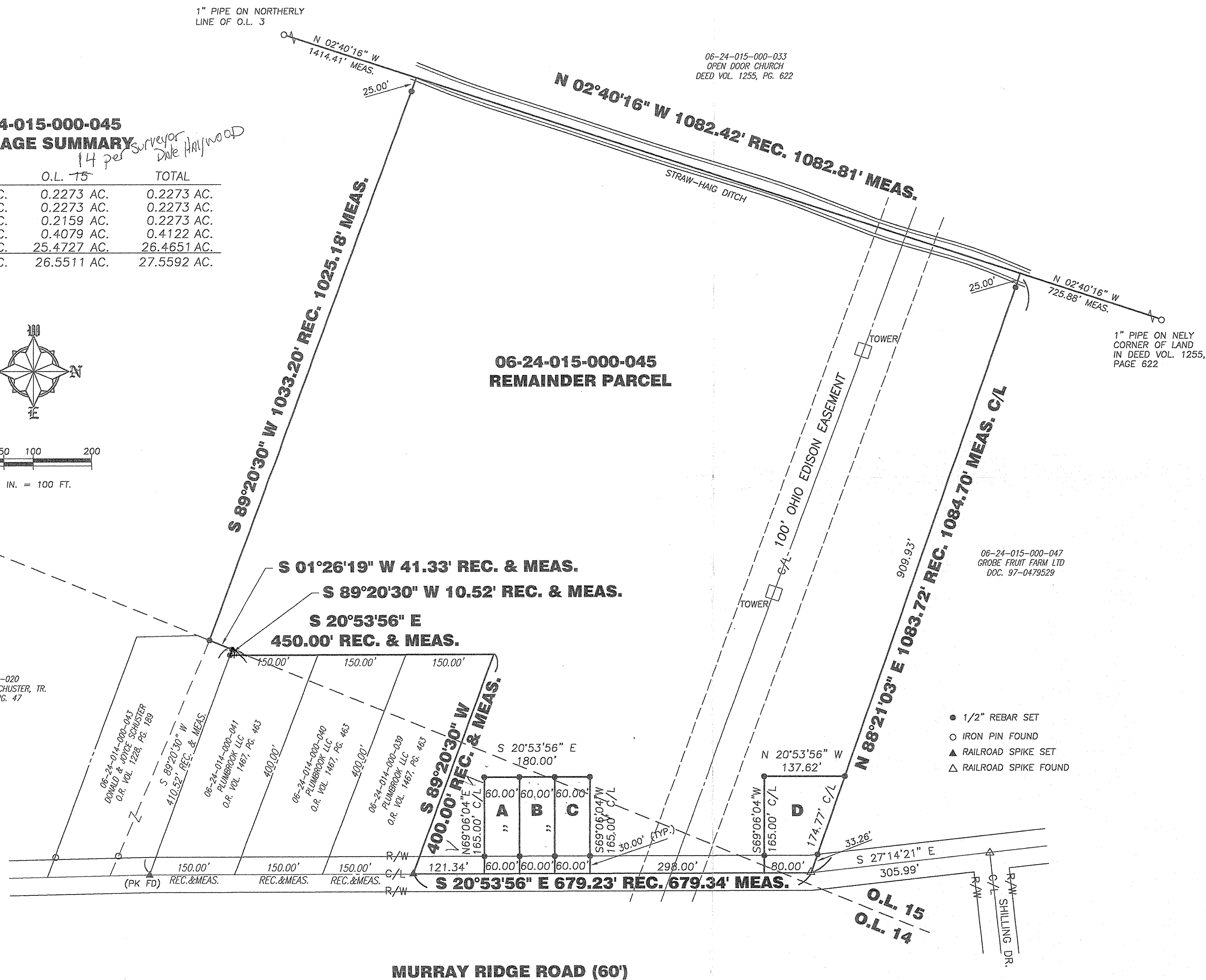
**06-24-015-000-045
ACREAGE SUMMARY**

15
14 per Surveyor Dale Hillwood

| | O.L. 14 | O.L. 15 | TOTAL |
|-----------|------------|-------------|-------------|
| "A" | - AC. | 0.2273 AC. | 0.2273 AC. |
| "B" | - AC. | 0.2273 AC. | 0.2273 AC. |
| "C" | 0.0114 AC. | 0.2159 AC. | 0.2273 AC. |
| "D" | 0.0043 AC. | 0.4079 AC. | 0.4122 AC. |
| REMAINDER | 0.9924 AC. | 25.4727 AC. | 26.4651 AC. |
| TOTAL | 1.0081 AC. | 26.5511 AC. | 27.5592 AC. |



06-24-015-000-020
DONALD & CHARLOTTE SCHUSTER, TR.
O.R. VOL. 1434, PG. 47



BOUNDARY SURVEY
CITY OF ELYRIA LORAIN COUNTY
STATE OF OHIO
PART OF ORIGINAL ELYRIA TOWNSHIP LOTS 14 & 15
WEST OF THE RIVER
AS RECORDED IN O.R. VOL. 1467, PG. 463
06-24-015-000-045

SITUATED IN THE CITY OF ELYRIA, COUNTY OF LORAIN, STATE OF OHIO AND BEING PART OF ORIGINAL ELYRIA TOWNSHIP LOTS 14 & 15, WEST OF THE RIVER.
I CERTIFY THAT AT THE REQUEST OF THE OWNERS I HAVE SURVEYED AND PLATTED THE LANDS SHOWN HEREON. ALL MEASUREMENTS ARE IN FEET AND DECIMAL PARTS THEREOF. ANGLES ARE TO AN ASSUMED MERIDIAN AND ARE USED TO DESCRIBE ANGLES ONLY.



PREPARED FOR
SPRINGBROOK LTD
33488 LIBERTY PARKWAY
NORTH RIDGEVILLE, OHIO 44039
(440) 327-3030
(440) 327-3071 FAX

PREPARED BY
HAYWOOD CIVIL ENGINEERING
630 CLEVELAND STREET
ELYRIA, OHIO 44035
(440) 365-9831
(440) 365-3426 FAX

Haywood
CIVIL ENGINEERING
& LAND SURVEYING
ELYRIA, OHIO