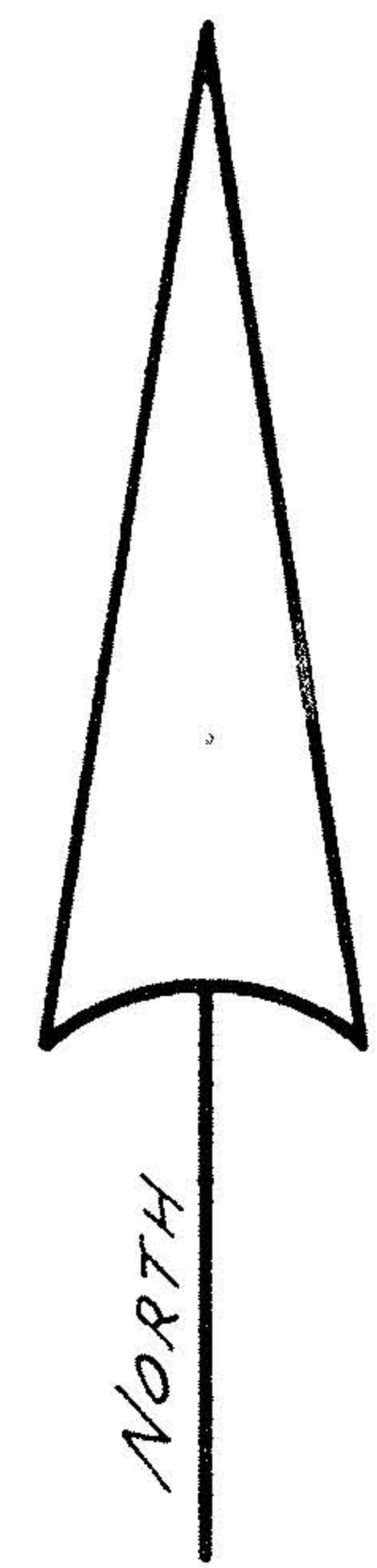
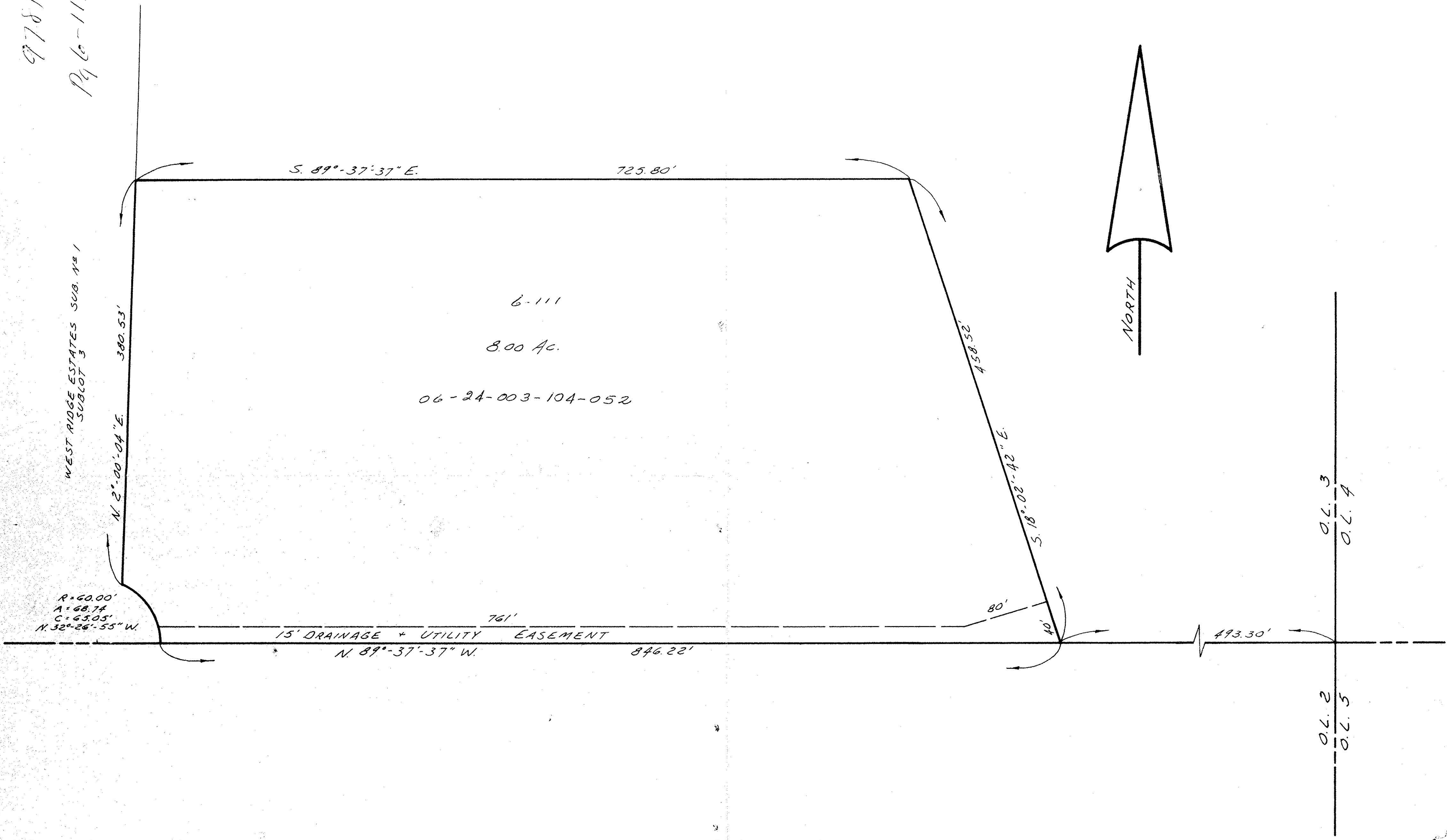


06-24-003

9781
Pg 6-111



$R = 60.00'$
 $A = 68.74'$
 $C = 65.05'$
 $N. 32^{\circ} 26' 55'' W.$

PROJECT

PARCEL MAP
 of part of
 ORIGINAL LOT # 3 - WEST of BLACK RIVER
 CITY of ELYRIA COUNTY of LORAIN
 STATE of OHIO

Prepared for:

Rev.

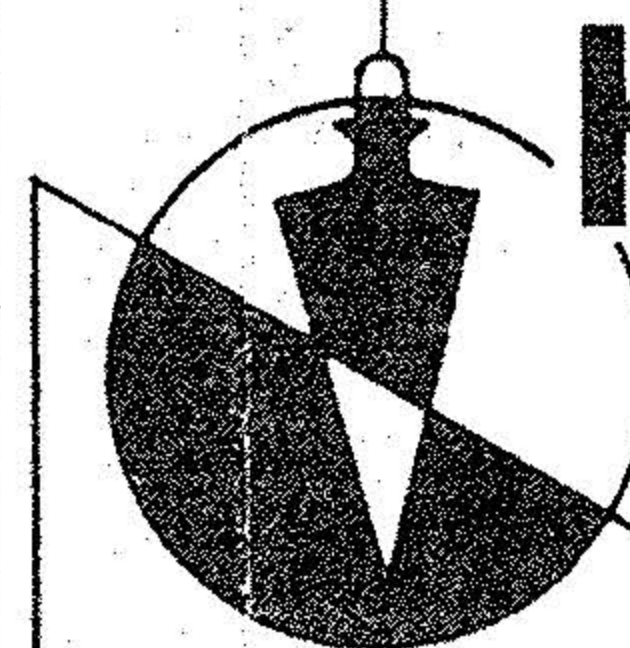
Drawn by: T.L.

Checked by:

App. by:

Scale: 1" = 60'

Date: 7-6-76



KLEINOEDER-SCHMIDT
 and ASSOCIATES

ENGINEERS — SURVEYORS — CONSULTANTS in LAND PLANNING

ELYRIA - NORWALK - MEDINA

OHIO

REFERENCES

SHEET NO. 1 of 1

JOB NO. 62-83

O.L. 3
 O.L. 4
 O.L. 2
 O.L. 5

06-24-003