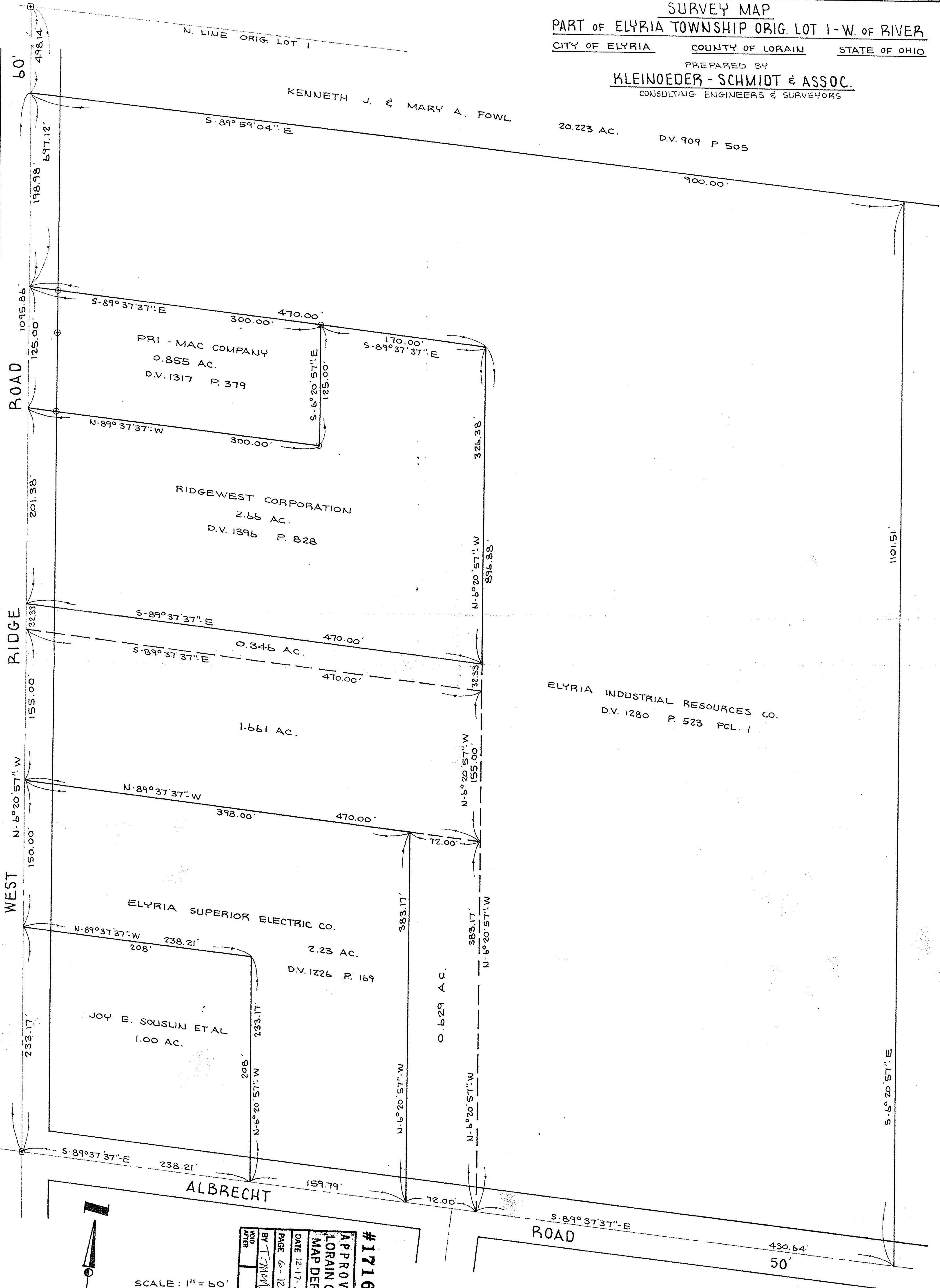


SURVEY MAP
 PART OF ELYRIA TOWNSHIP ORIG. LOT 1 - W. OF RIVER
 CITY OF ELYRIA COUNTY OF LORAIN STATE OF OHIO

PREPARED BY
KLEINOEDER - SCHMIDT & ASSOC.
 CONSULTING ENGINEERS & SURVEYORS

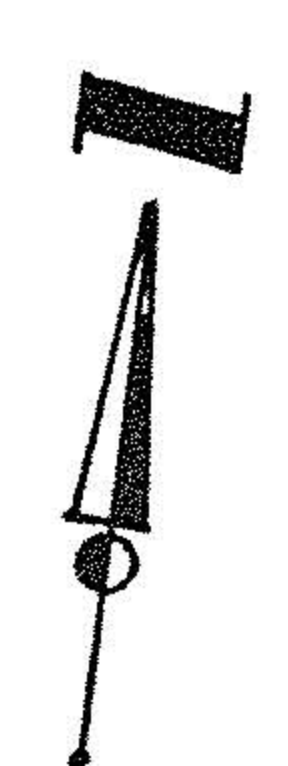
KENNETH J. & MARY A. FOWL

20.223 AC. D.V. 909 P. 505



ROAD
RIDGE
WEST

ELYRIA INDUSTRIAL RESOURCES CO.
 D.V. 1280 P. 523 PCL. 1



SCALE: 1" = 60'

#17162
APPROVED
LORAIN CO.
MAP DEPT.
DATE 12-17-86
PAGE 6-128
BY T. McCall
VOID AFTER