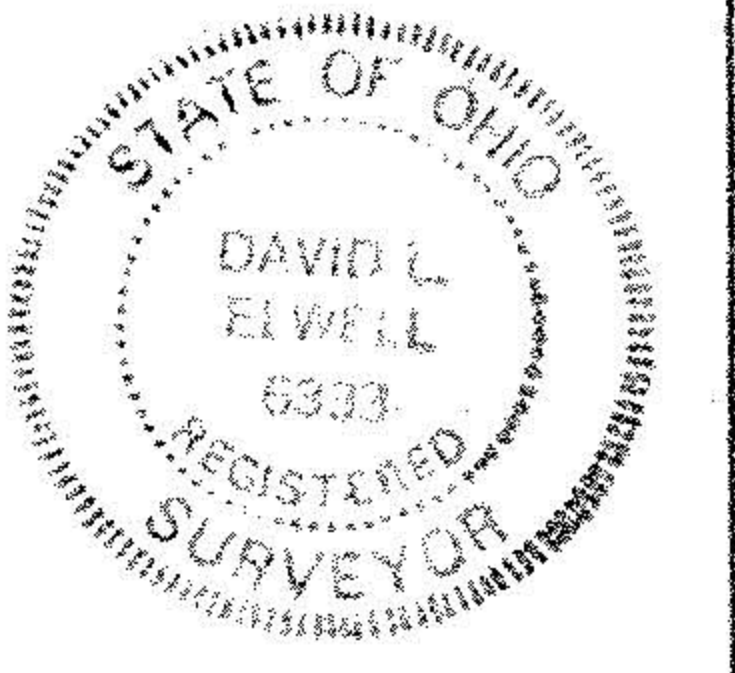
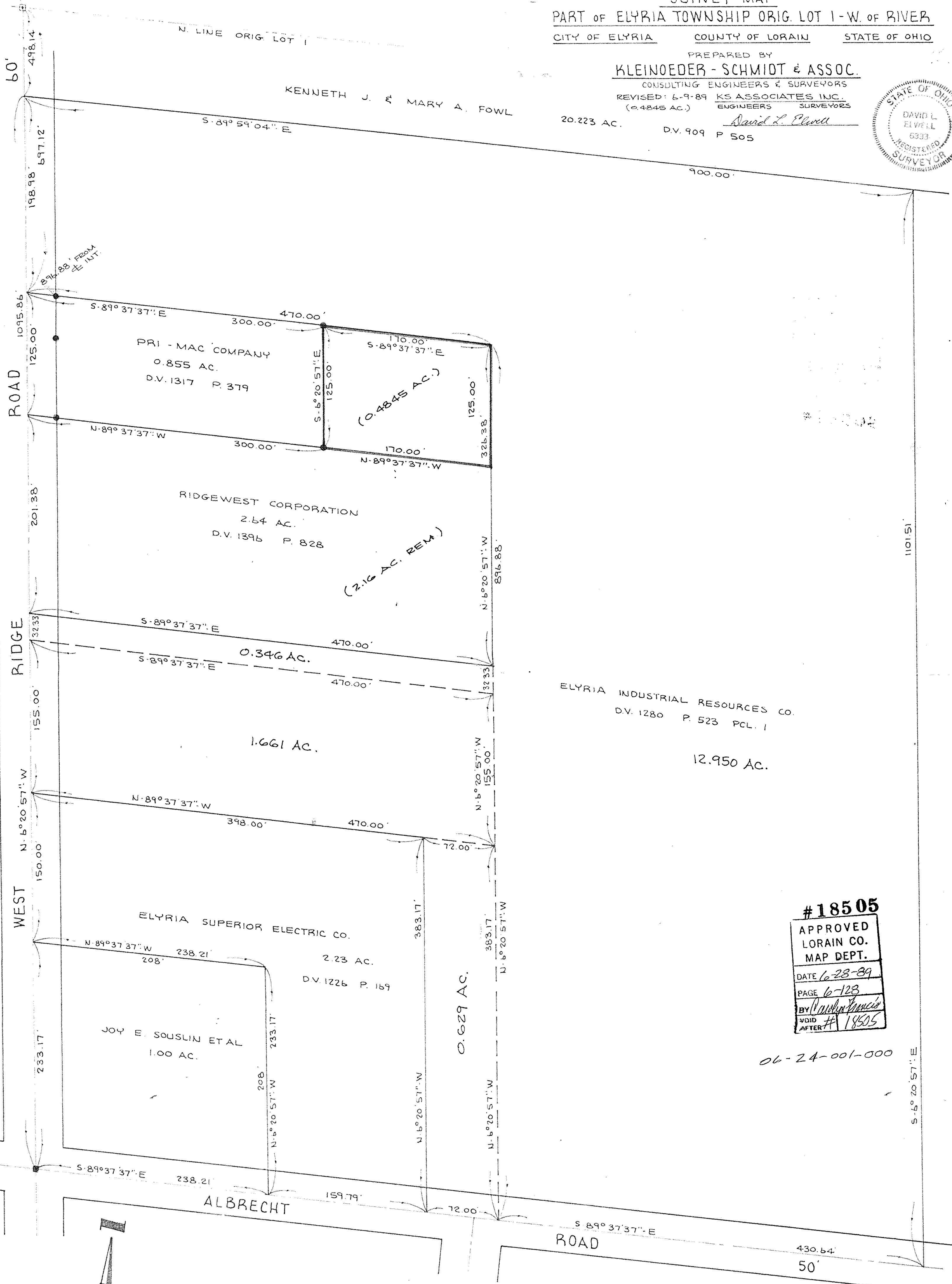


**SURVEY MAP**  
 PART OF ELYRIA TOWNSHIP ORIG. LOT 1-W. OF RIVER  
 CITY OF ELYRIA COUNTY OF LORAIN STATE OF OHIO

PREPARED BY  
**KLEINOEDER - SCHMIDT & ASSOC.**  
 CONSULTING ENGINEERS & SURVEYORS  
 REVISED: 6-9-89 KS ASSOCIATES INC.  
 (0.4845 AC.) ENGINEERS SURVEYORS  
 20.223 AC. D.V. 909 P 505  
*David L. Clowell*



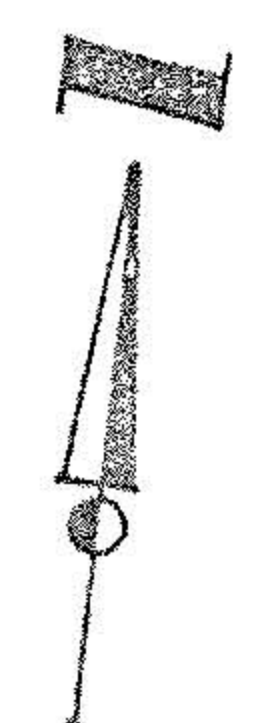
KENNETH J. & MARY A. FOWL



ELYRIA INDUSTRIAL RESOURCES CO.  
 D.V. 1280 P. 523 PCL. 1  
 12.950 AC.

**#18505**  
 APPROVED  
 LORAIN CO.  
 MAP DEPT.  
 DATE 6-23-89  
 PAGE 6-128  
 BY *David L. Clowell*  
 VOID AFTER #18505

06-24-001-000



SCALE: 1" = 60'