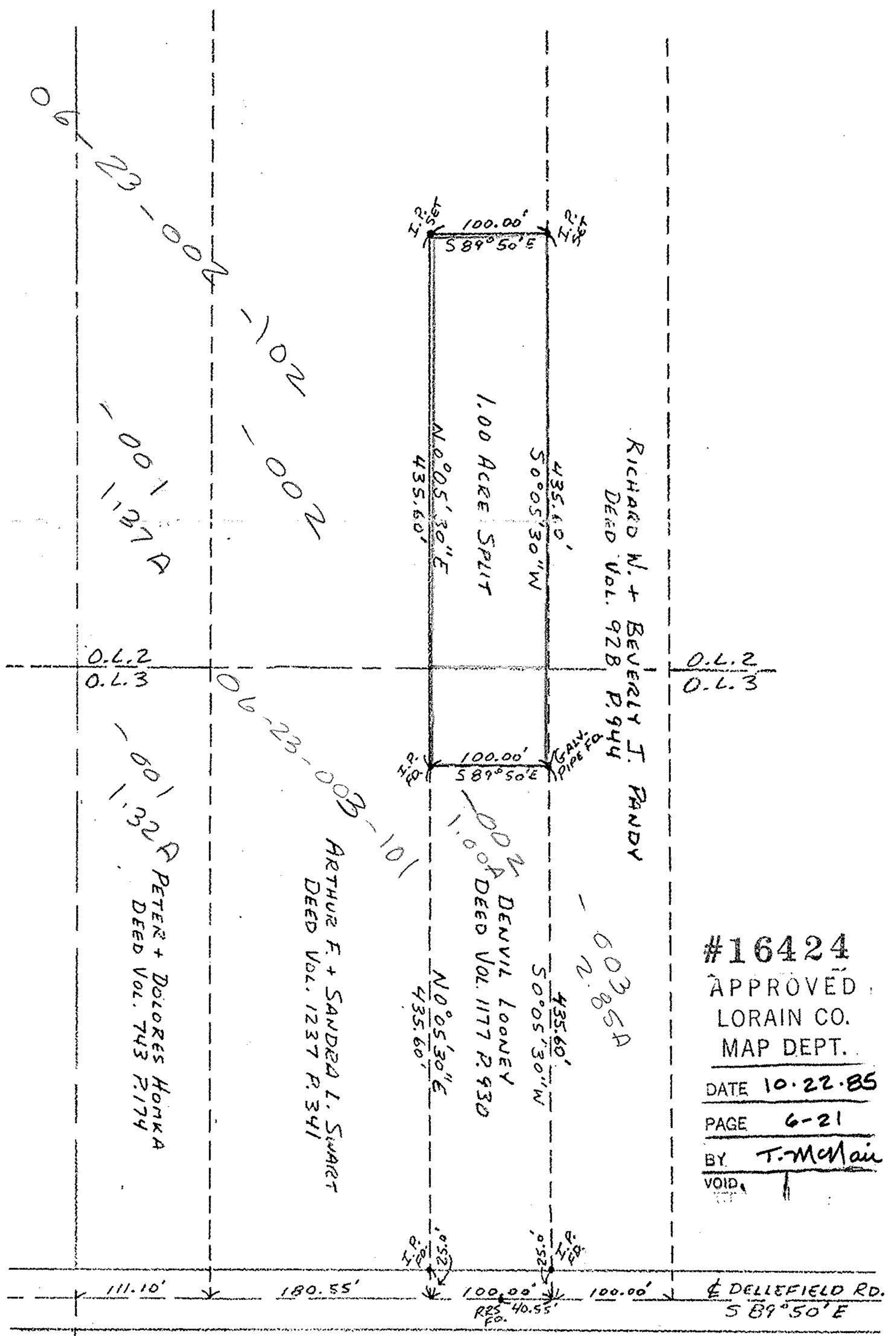


NORTH
SCALE 1"=100'



APPROVED BY THE LORAIN CITY PLANNING COMMISSION. 8-17-85
SECRETARY LORAIN CITY PLANNING COMMISSION

APPROVED
AS TO DESCRIPTION ONLY

Date 10-16-85

City of Lorain

Per *Swede E. Lewis*

Engineer

#16424
APPROVED
LORAIN CO.
MAP DEPT.

DATE 10-22-85
PAGE 6-21
BY T. McMain
VOID

SURVEY OF 1.00 ACRE SPLIT FOR DENVIL LOONEY
ELYRIA TWP. O.L. #2 + #3
JUNE 1985

SCALE 1"=100'
DATE 6/15/85

APPROVED BY:

DRAWN BY JRA
REVISED

JOHN R. HAMILTON
REG. SURV. #6861

DRAWING NUMBER