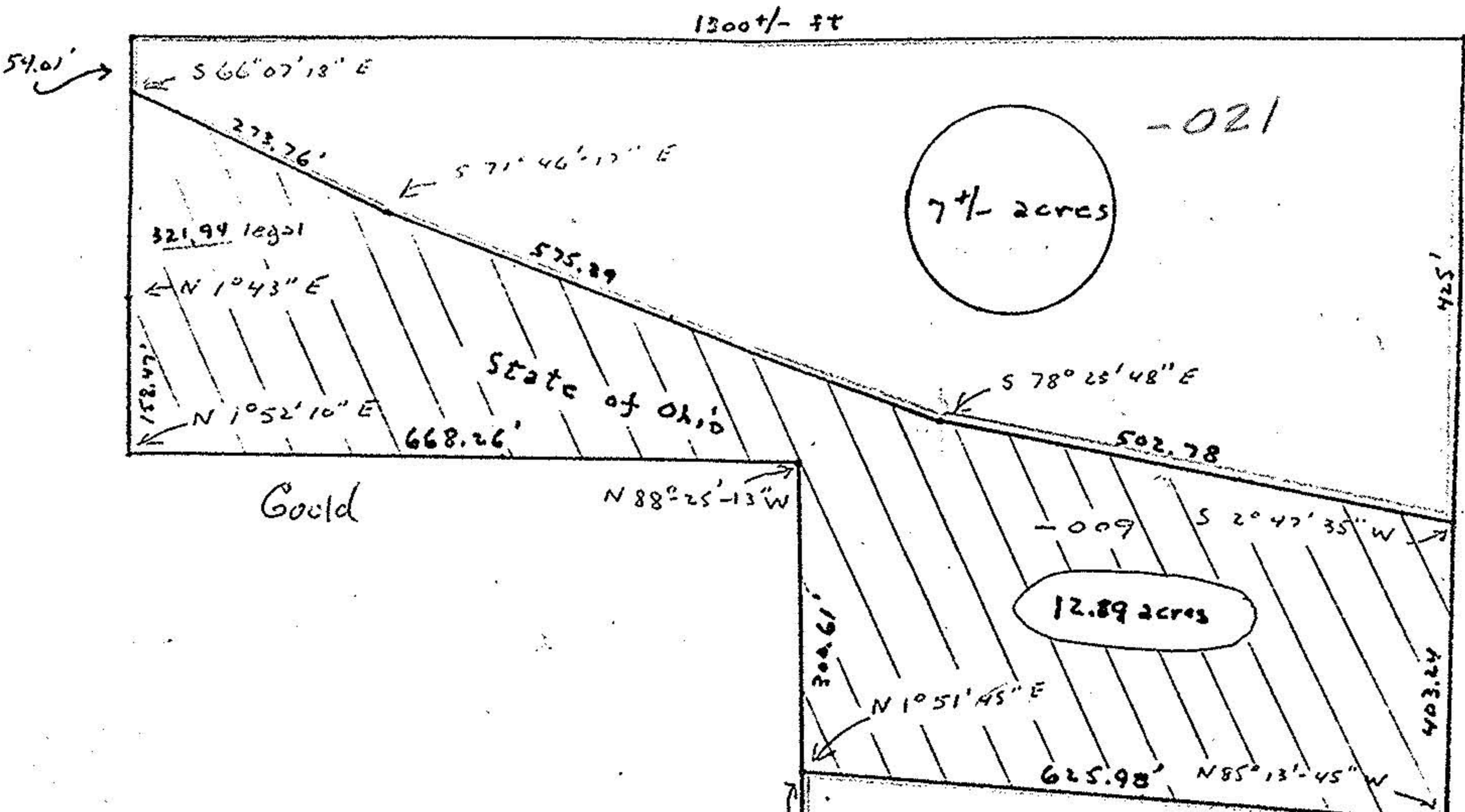


Dudley V. Bell  
Appraisals

06-23-88-00-021

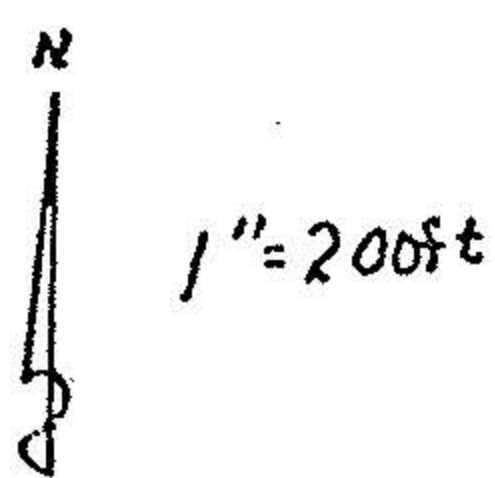


375/811 1945 original of easement

714/68 1958 new of easement

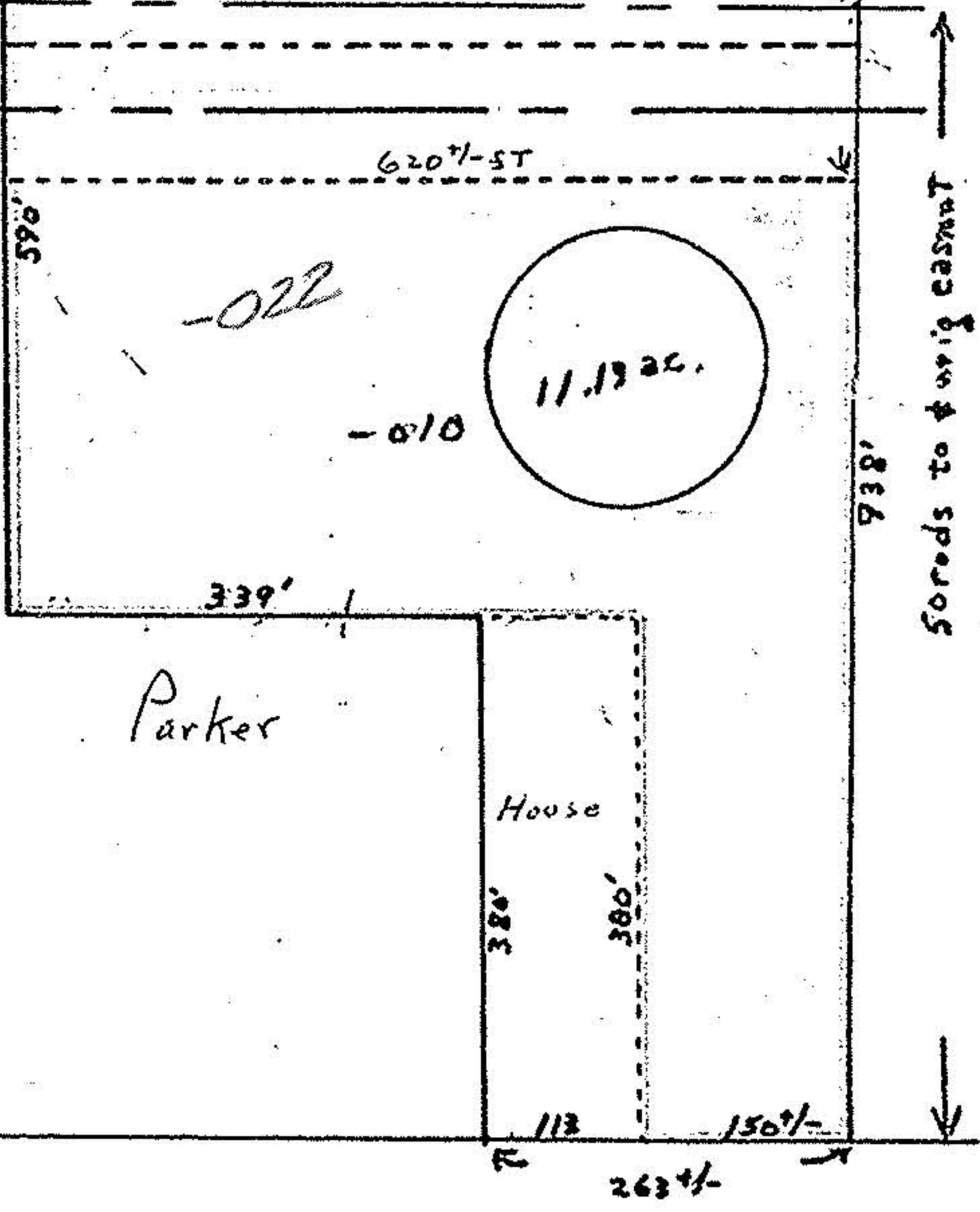
APPROVED  
LORAIN CO.  
MAP DEPT.  
DATE 9-10-82  
PAGE 6-23-6-A  
BY C. Francis  
VOID AFTER 11/11/89

11/11  
51.00



#14817

6-23  
6-A1



Not to Scale