



# KLEINOEDER-SCHMIDT and ASSOCIATES

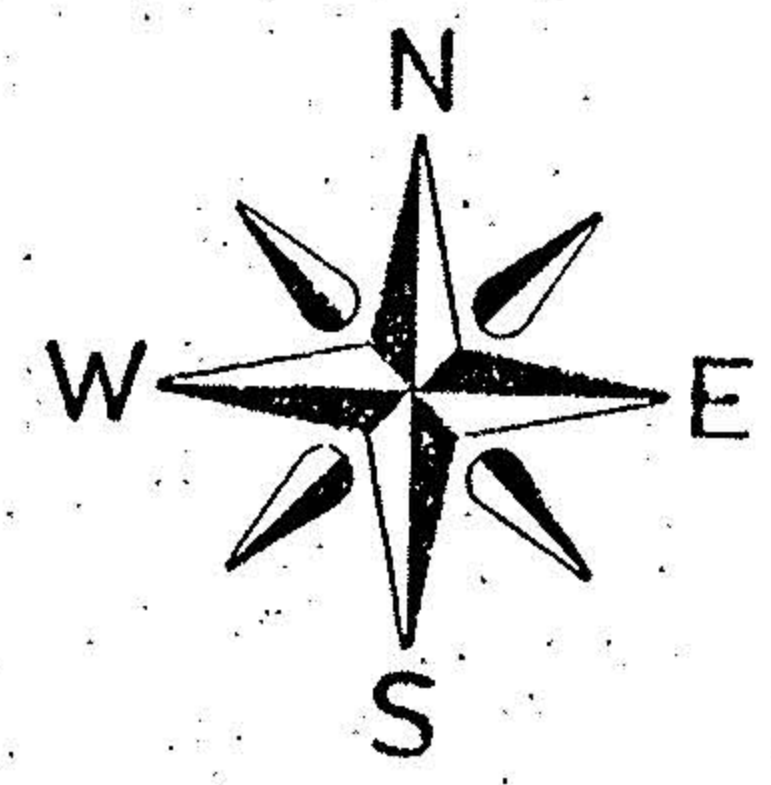
ENGINEERS — SURVEYORS — CONSULTANTS IN LAND PLANNING  
ELYRIA - HORWALK - MEDINA OHIO

Sublot(s) PART OF 4

Subd'n MIDWAY INDUSTRIAL PARK  
P.V. 36 P.P. 17 & 18

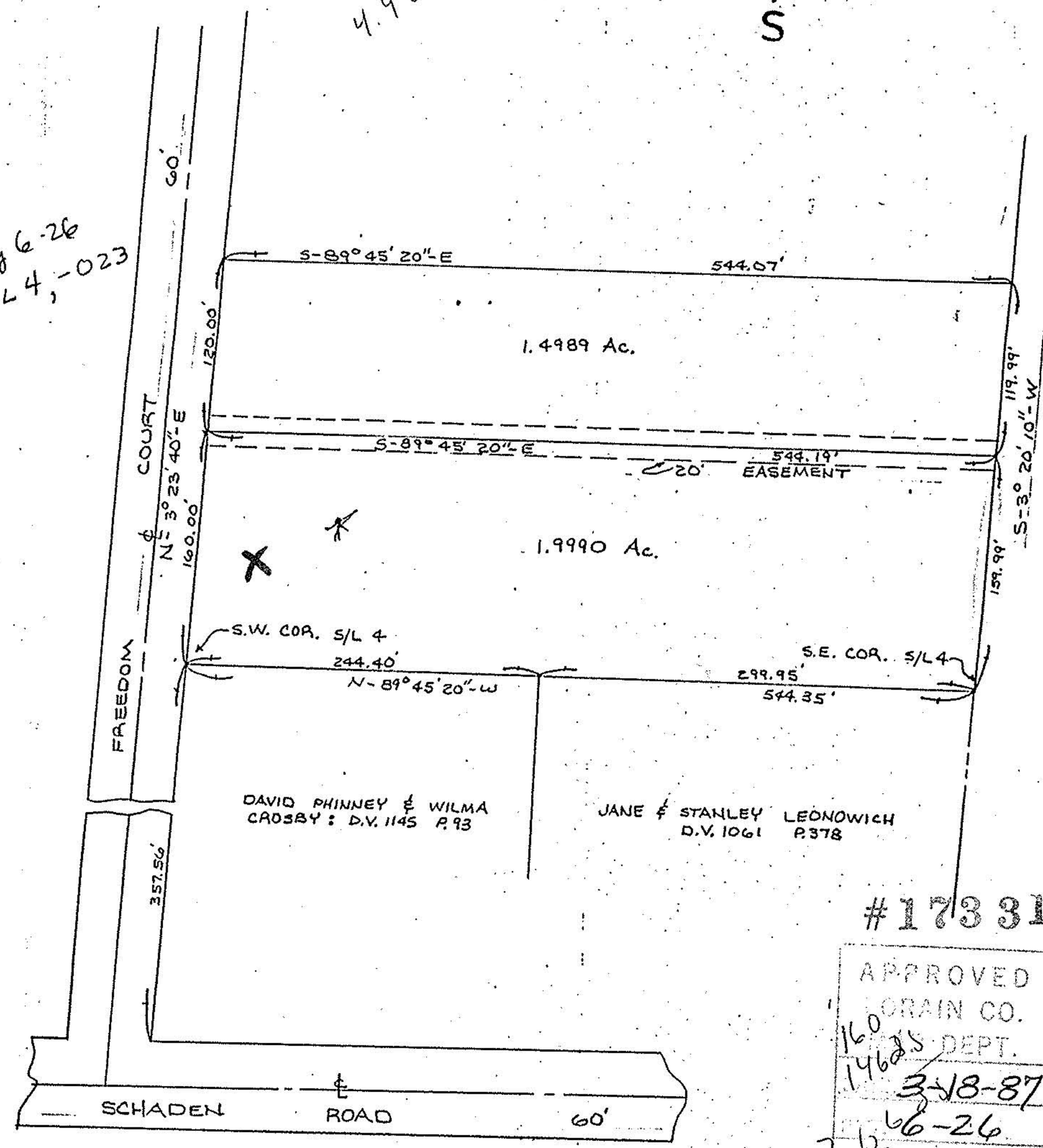
Township ELYRIA  
Orig. Lot(s) 8  
County of LORAIN  
Corporation CITY OF ELYRIA  
Tract BRACE  
Sec.  
State of Ohio

06-23-008-106  
#17331  
6-26



1.9990  
2.905  
4.9040

Page 26  
S/L 4, -023



#17331

APPROVED  
LORAIN CO.  
PLANNING DEPT.  
3-18-87  
66-26  
BY C. FRANCIS  
VOID AFTER 17331