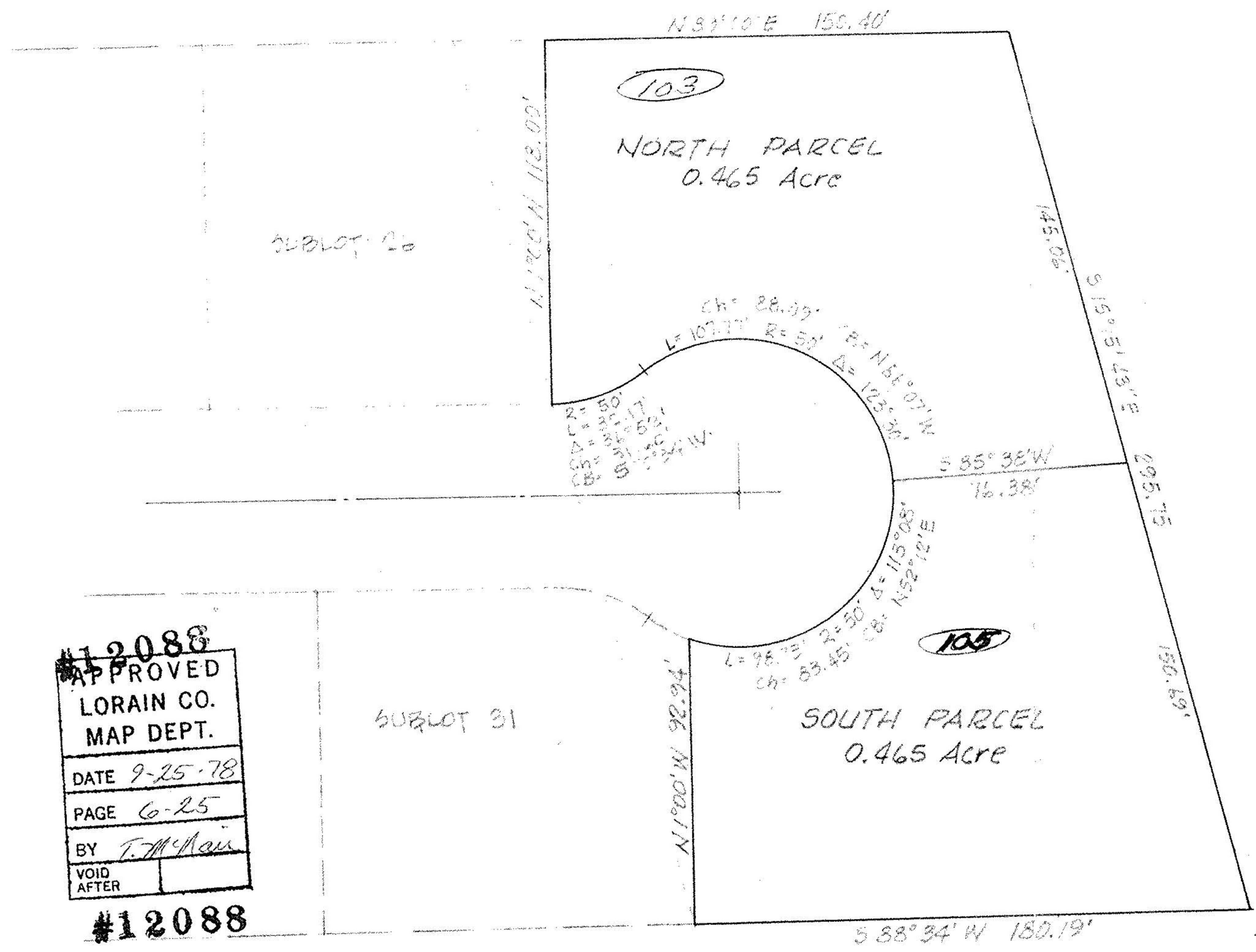


6-23-00 8 Co Brace Tract  
078

6-25



SCALE: 1" = 40'

#12088  
 APPROVED  
 LORAIN CO.  
 MAP DEPT.  
 DATE 9-25-78  
 PAGE 6-25  
 BY T. McMan  
 VOID  
 AFTER  
 #12088

06-23-00 8-103 Co Brace Tract. (23)  
 -06-23-008-105  
 07. 8

MAP of PROPOSED PARCEL SPLIT  
 PREPARED FOR ATTY. JOSEPH UJHELYI  
 PART of ORIGINAL LOT 8, BRACE TRACT, ELYRIA TWP. &  
 ALSO PART of FRANK YUHAS SUBD. #3, PLAT VOL. 22 Pg. 56  
 TOWNSHIP of ELYRIA, LORAIN COUNTY, OHIO

McGLINCHY and ASSOCIATES  
 PROFESSIONAL ENGINEER & SURVEYORS  
 ELYRIA OHIO  
 AUGUST 1978 #784067

6-25