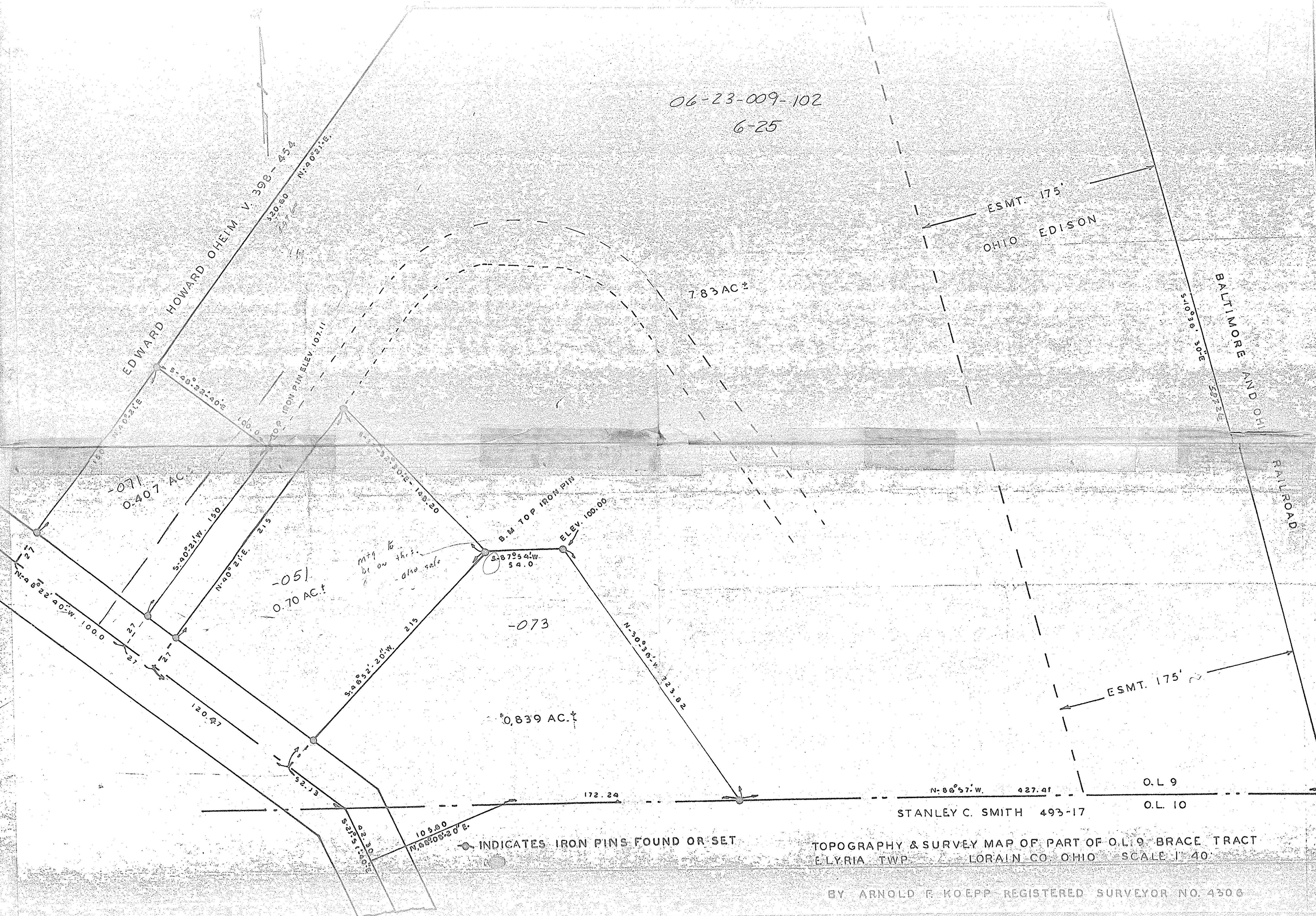


06-23-009-102
6-25



Mtg to be on this also safe

INDICATES IRON PINS FOUND OR SET

TOPOGRAPHY & SURVEY MAP OF PART OF O.L. 9 BRACE TRACT
ELYRIA TWP. LORAIN CO. OHIO SCALE 1" = 40'

BY ARNOLD F. KOEPP REGISTERED SURVEYOR NO. 4306

STANLEY C. SMITH 493-17
O.L. 9
O.L. 10

BALTIMORE AND OHIO
RAILROAD
51036' 30"E
58726'

OHIO EDISON
ESMT. 175'

ESMT. 175'

RAILROAD

EDWARD HOWARD OHEIM V. 398-454
320.60
N. 40° 21' E.

-071
0.407 AC

-051
0.70 AC

-073

0.839 AC

7.83 AC

B.M. TOP IRON PIN
ELEV. 100.00
54.0

N. 40° 21' E. 100.00

S. 40° 21' W. 190

N. 40° 21' E. 215

S. 48° 32' 40" W. 215

N. 30° 36' W. 223.82

120.47

172.24

N. 86° 57' W. 427.41

S. 27° 30' E. 157.30
105.00
N. 88° 08' 20" E.