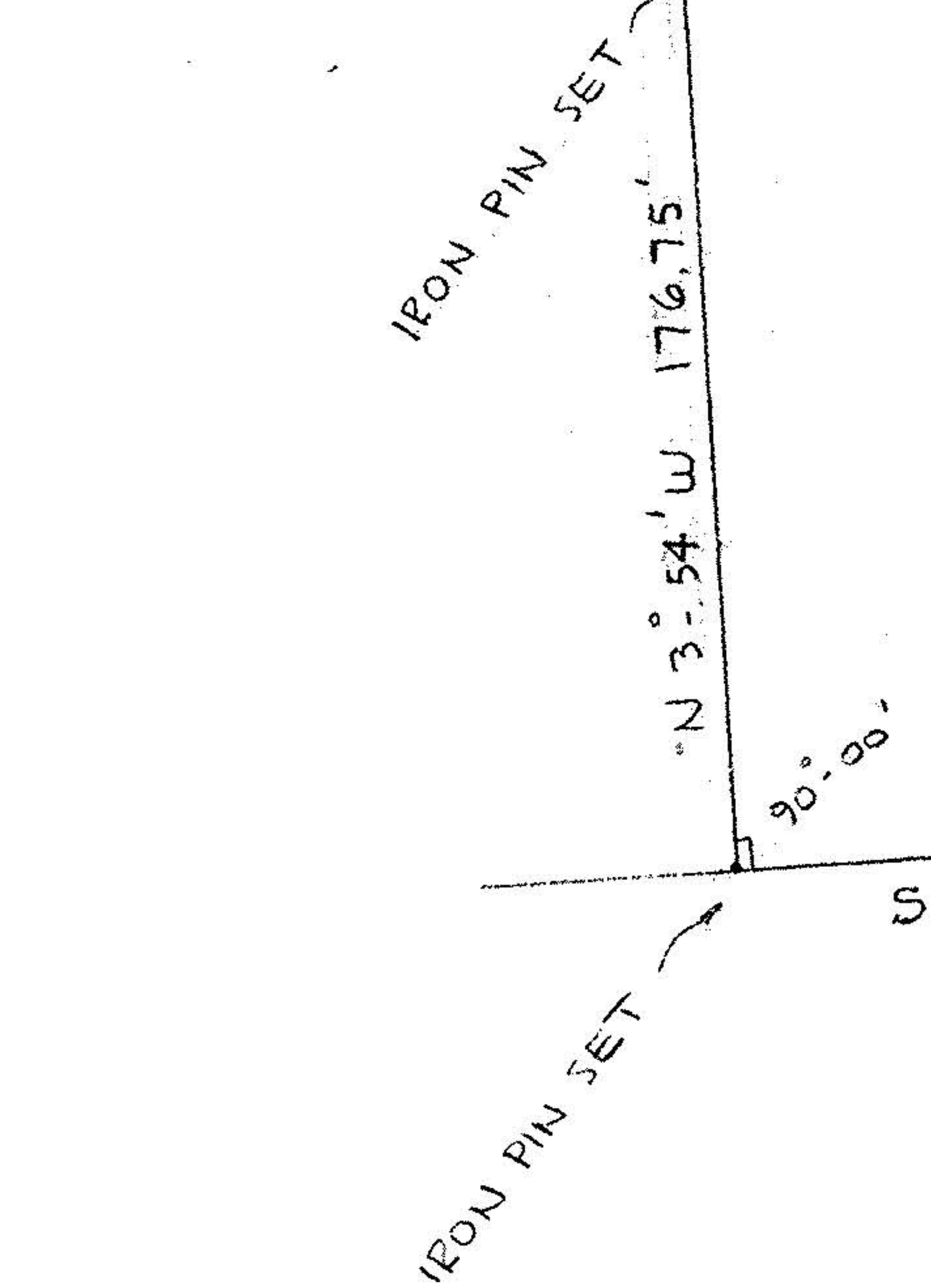
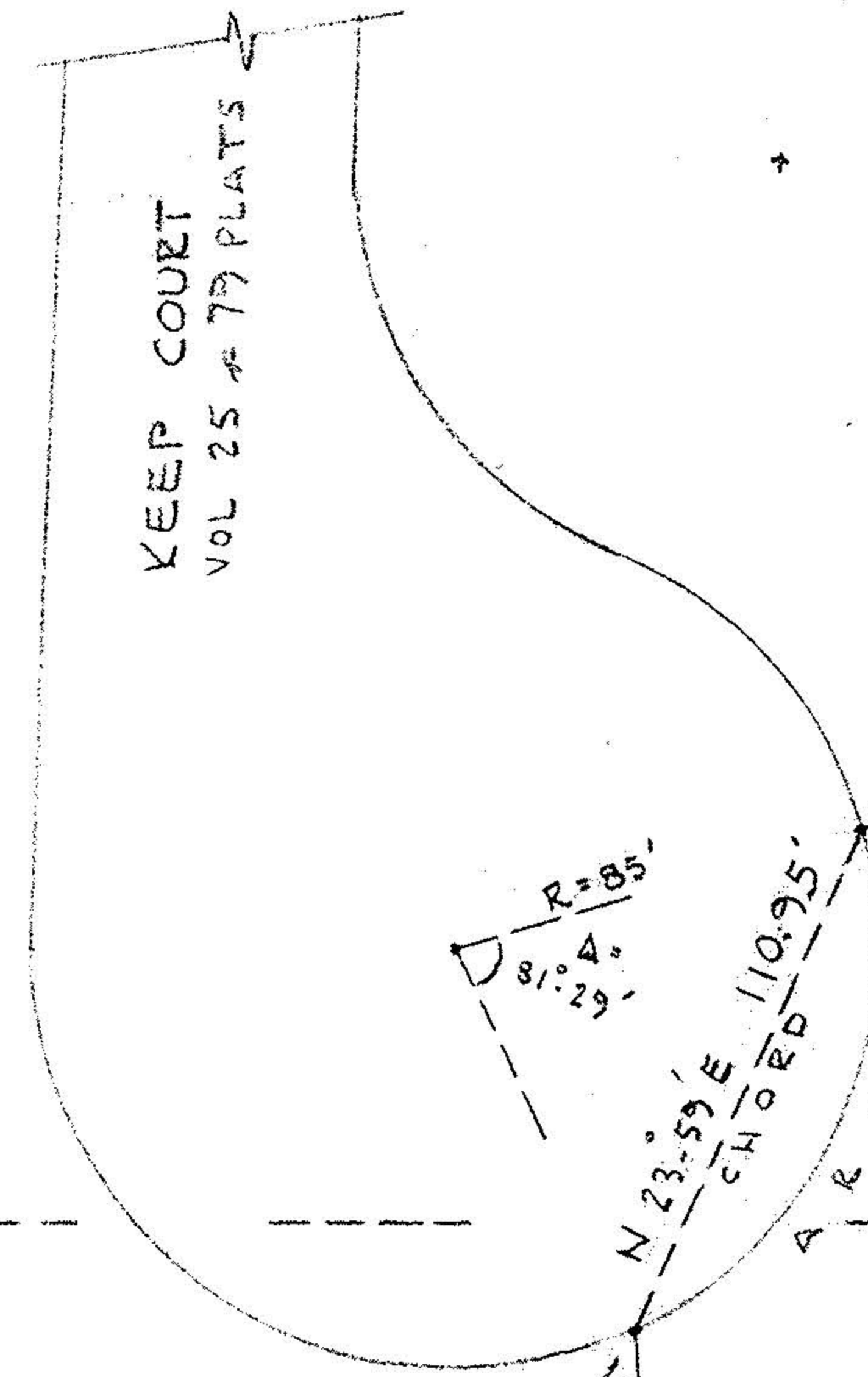
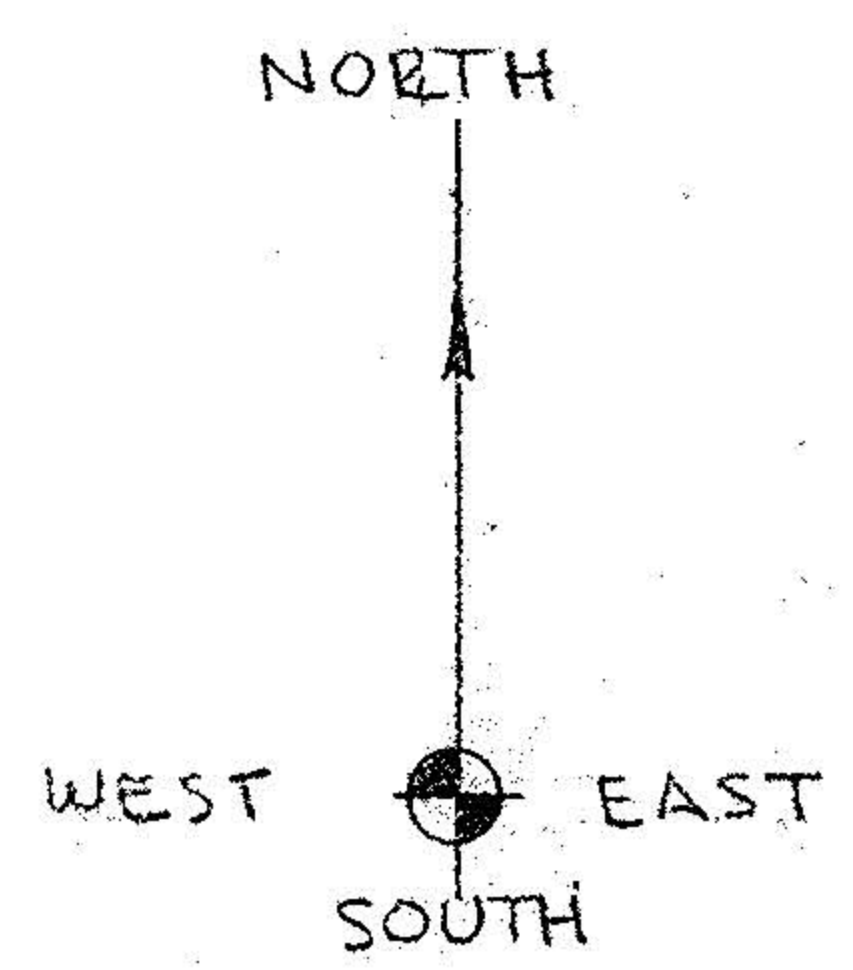


LATITUDE DEPARTURE

1.	N	89°-46'	E	144.92'	+	0.59	+ 144.92
2.	S	2°-56'	W	119.26'	-	119.10	- 6.10
3.	S	78°-13'	W	242.37'	-	49.49	- 237.26
4.	S	86°-13'	W	331.76'	-	21.89	- 331.04
5.	S	86°-06'	W	134.29'	-	9.13	- 133.98
6.	N	3°-54'	W	176.75'	+	176.34	- 12.02
7.	N	23°-59'	E	110.95'	+	101.37	+ 45.10
8.	N	86°-10'	E	535.98'	+	35.83	+ 534.78
9.	S	2°-12'	W	114.60'	-	114.52	- 4.40

+ 3.9873 ACRES  
 - .0359 DEC  
 + 3.9514

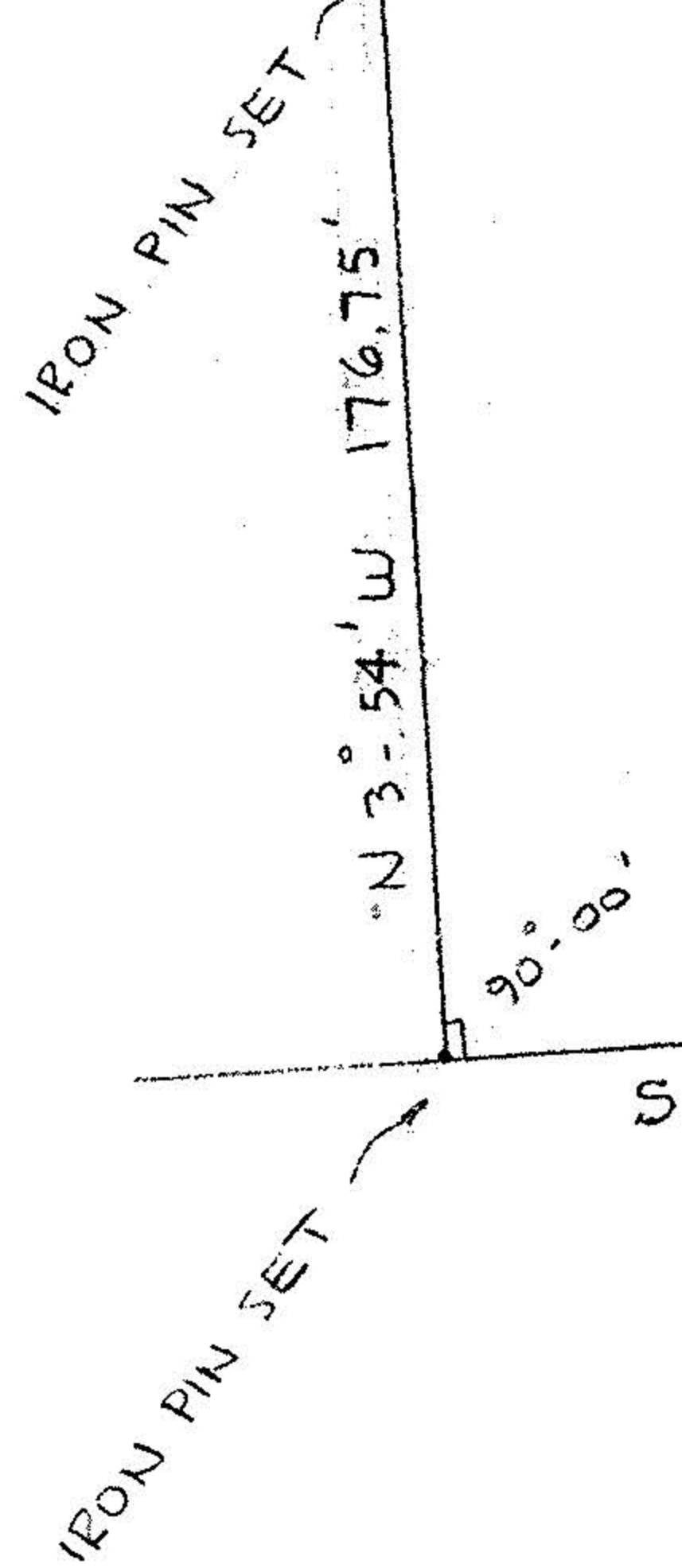


IRON PIN SET  
 N 86°-10' E 535.98'  
 06-23-013-101-021

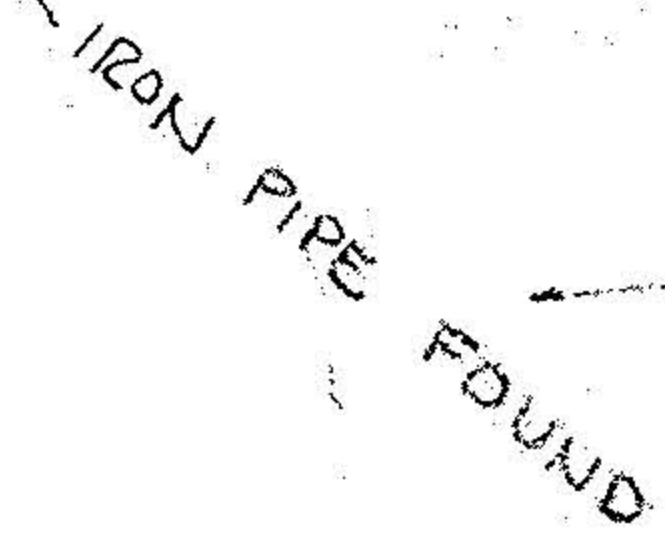
LOT # 13  
 LOT # 14  
 1.19 ACRES LOT # 13  
 2.76 ACRES LOT # 14  
 3.95 ACRES TOTAL

06-23-014-000-026

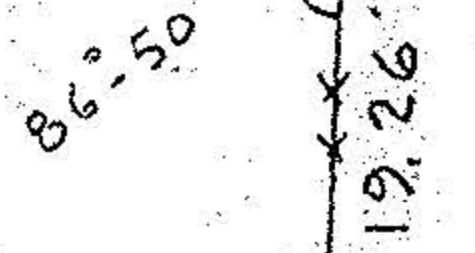
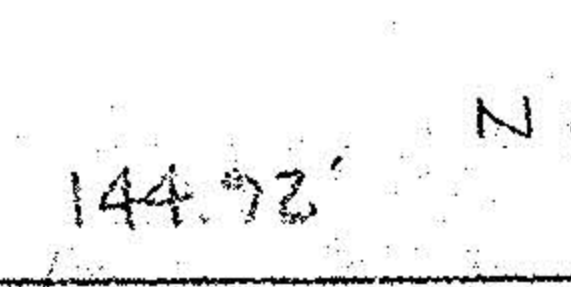
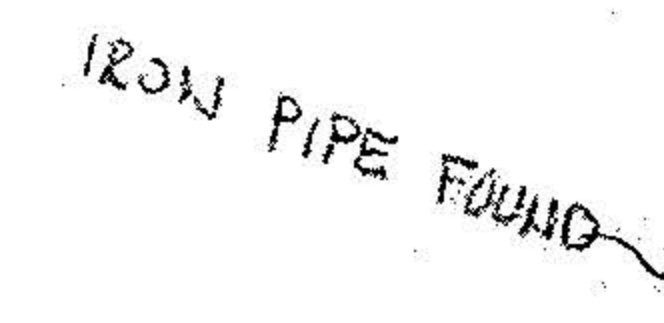
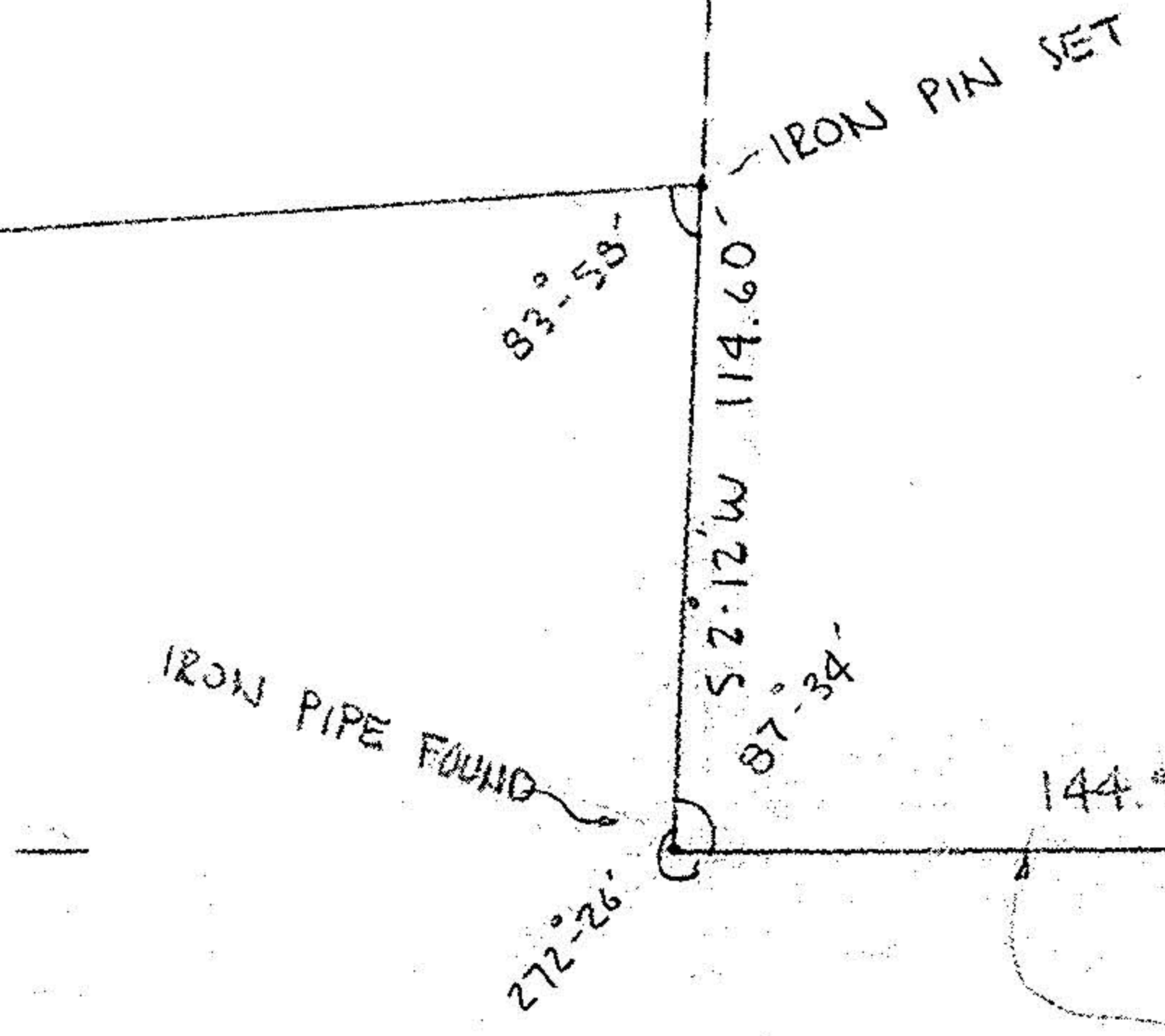
6-26  
 6-27



S 86°-06' W 134.29'  
 S 86°-13' W 331.76'

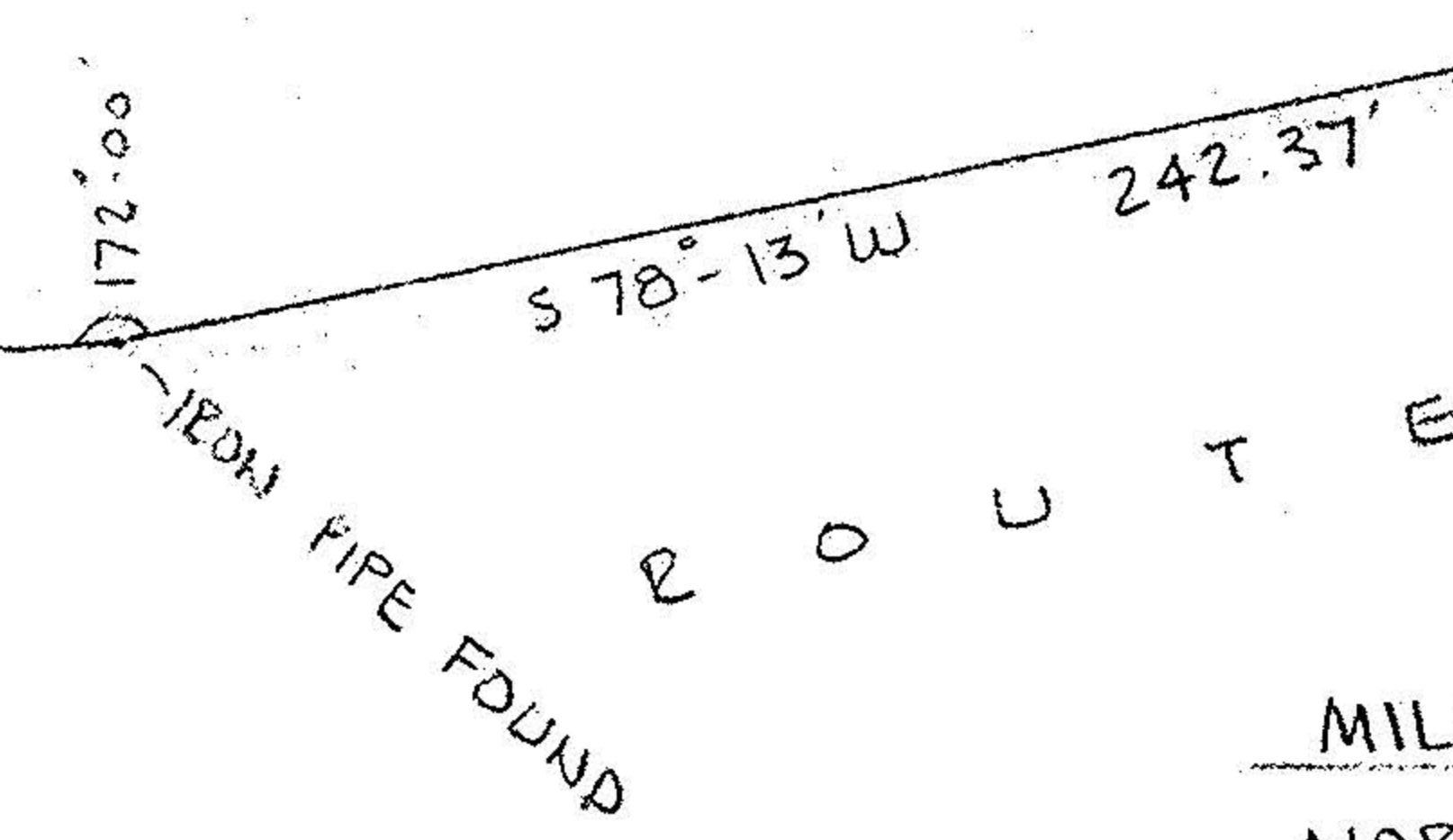


O H I O S T A T E



NORTH LINE LOT # 14

N.E. CR. LOT # 14

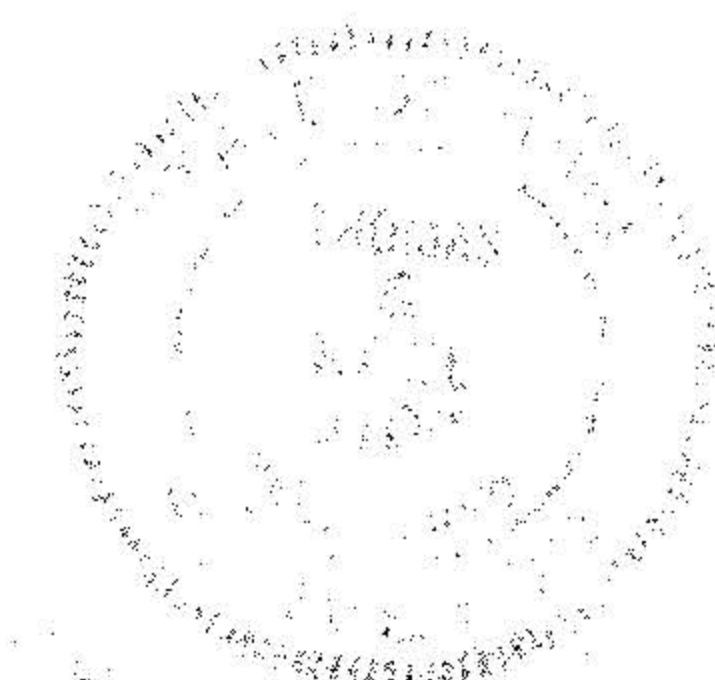


R O U T E # 2

MILAN STEEL INDUSTRIES  
 NORTHERLY PART LOT # 14  
 SOUTHERLY PART LOT # 13  
 BRACE TRACT  
 CITY OF ELYRIA  
 LORAIN COUNTY, OHIO

# 7426

PLAT OF SURVEY



SCALE: 1" = 50' 0"	APPROVED BY	DRAWN BY JDR
DATE: 28 MAR 73		
DRAWING NUMBER		FILE # 624

THOMAS G. REEL, P.E. ENGINEER-SURVEYOR MILAN, OHIO