

O.L. 15 N. 89° 24' 45" E
O.L. 16 554.92

06-23-016-102-027

6-28
6-46

APPROVED
LYRIN CO.
PLANNING DEPT.
DATE 10-17-77
BY 6-46+6-28
BY Robert A. Rick
VOID AFTER #11102

6.5788 Acres

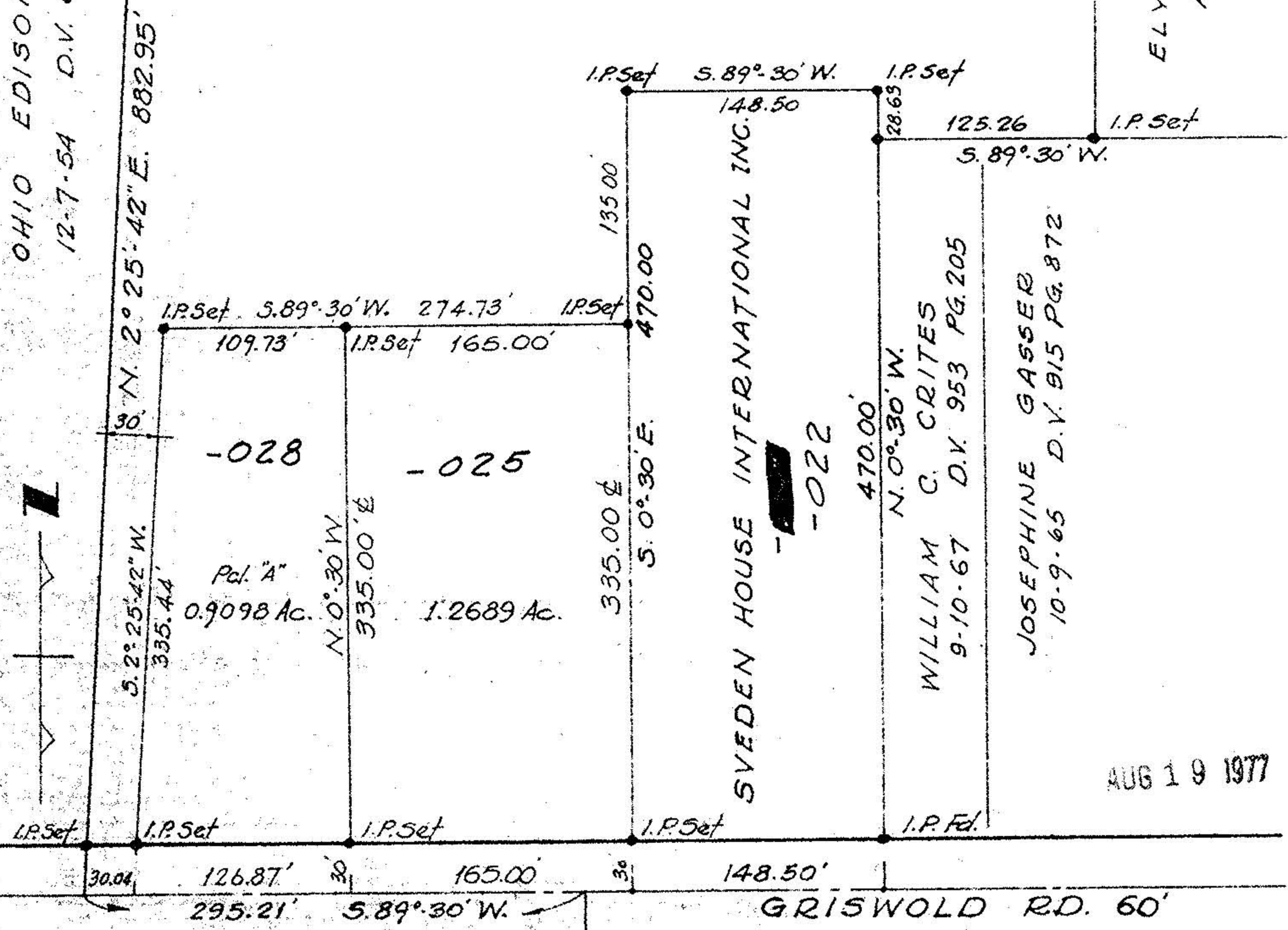
OHIO EDISON CO.
12-7-54 D.V. 615 PG. 82

ELYRIA TWP. BD. OF ED.
AUG. 1940 D.V. 311 PG. 73

6-28
6-46

AUG 19 1977

06-23-016-102



SURVEY FOR GRISWOLD TOWER, INC.

PART OF O.L. 16 BRACE TRACT ELYRIA TOWNSHIP
CITY OF ELYRIA LORAIN COUNTY OHIO

SCALE 1"=100'

DEC. 11, 1972

LAUNDON · SIMON · CAHL & ASSOC.

SURVEYORS

Revised 8-2-77 #77-652

Revised 9-9-75

Revised 7-3-75

Revised 12-26-72

Job 72-67