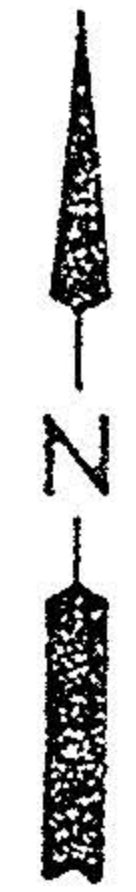


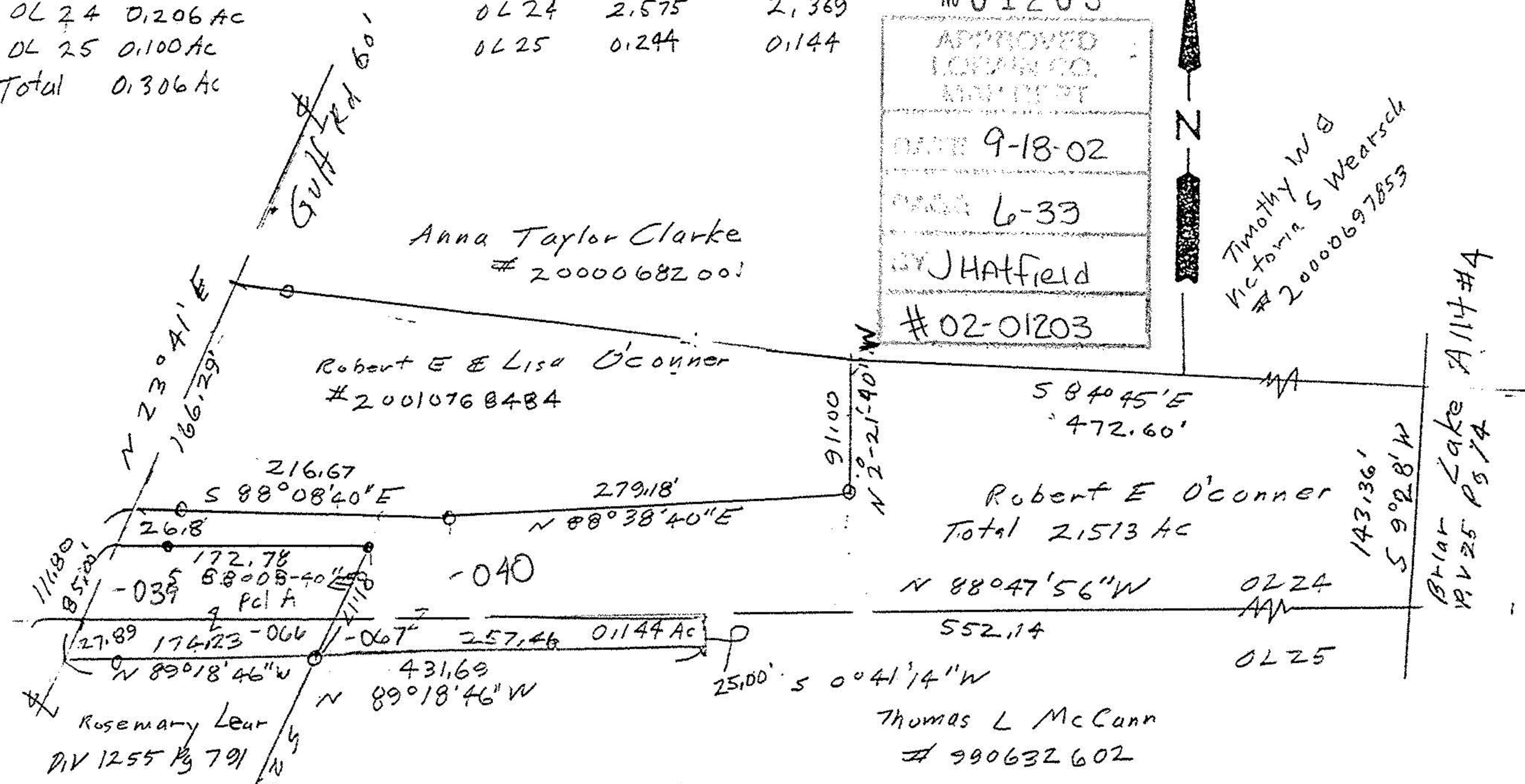
Parcel A
 OL 24 0.206 Ac
 OL 25 0.100 Ac
 Total 0.306 Ac

	ACRES	
Total	2.819	2.513
OL 24	2.575	2.369
OL 25	0.244	0.144

No 01203
 APPROVED
 LORAIN CO.
 MAINT
 DATE 9-18-02
 PAGE 6-33
 BY J Hatfield
 # 02-01203



Timothy W B
 Victoria S Wearsch
 # 20000697853



- o iron pipes fd
- iron pins set

Survey for Robert O'Conner Parcel Split
 Part of Original Elyria Township
 Lots 24 & 25, Brace Tract
 City of Elyria Lorain County Ohio
 Scale 1"=100' July 2002 sept
 John Pozzywak

