

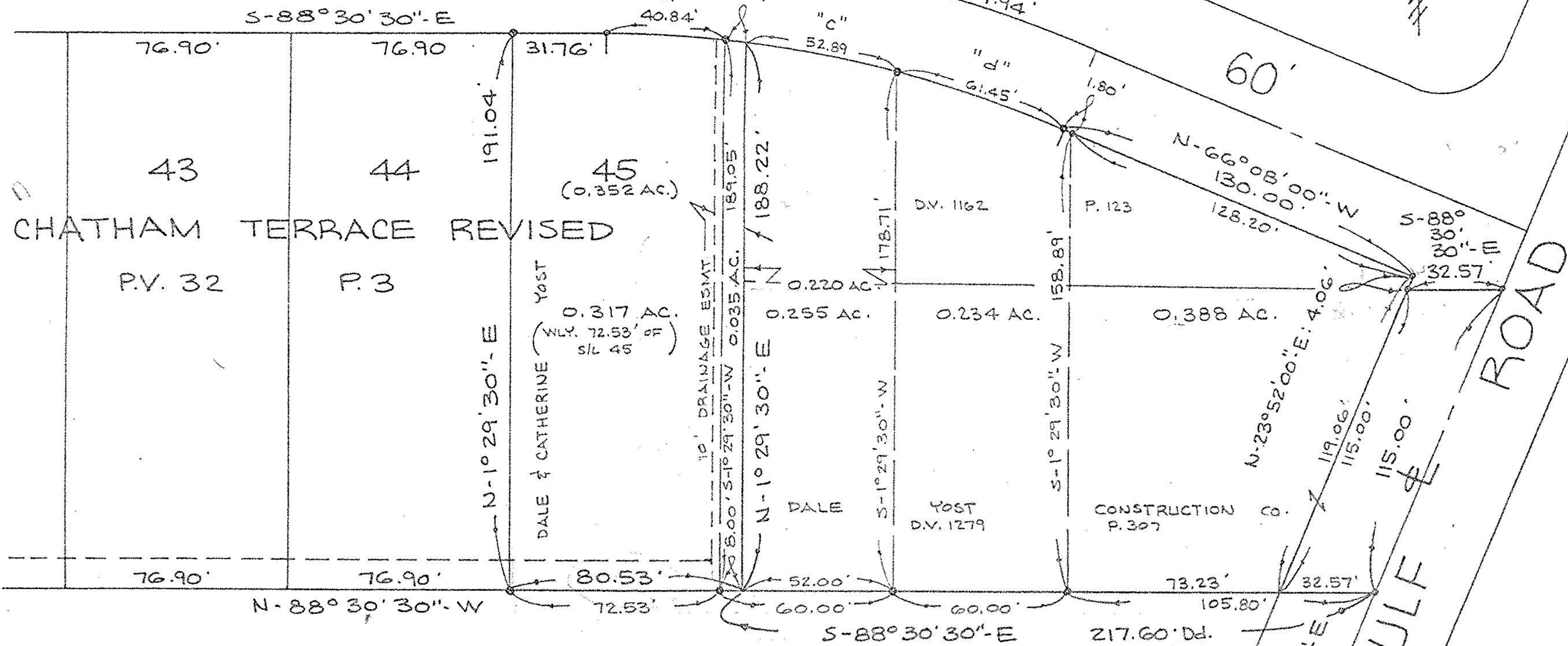
CRESTVIEW

DRIVE

R = 447.97'

A = 179.94'

NORTH



#14158

APPROVED  
LORAIN CO.  
MAP DEPT.  
DATE 4-20-81  
PAGE 6-33  
BY Carolyn J  
VOID  
AFTER

PARCEL MAP

PART OF  
ORIGINAL LOT 24 OF  
BRACE TRACT  
ELYRIA TOWNSHIP  
CITY OF ELYRIA COUNTY OF LORAIN  
STATE OF OHIO

CURVE DATA:

	RADIUS	Δ	ARC	CHORD	BEARING
"a"	417.97'	5°35'52"	40.84'	40.82'	S-85°42'34"-E
"b"	417.97'	1°06'09"	8.04'	8.04'	S-82°36'27"-E
"c"	417.97'	7°15'03"	52.89'	52.86'	S-78°08'42"-E
"d"	417.97'	8°25'26"	61.45'	61.40'	S-70°20'43"-E

SCALE: 1" = 40'

81-29  
(6333)