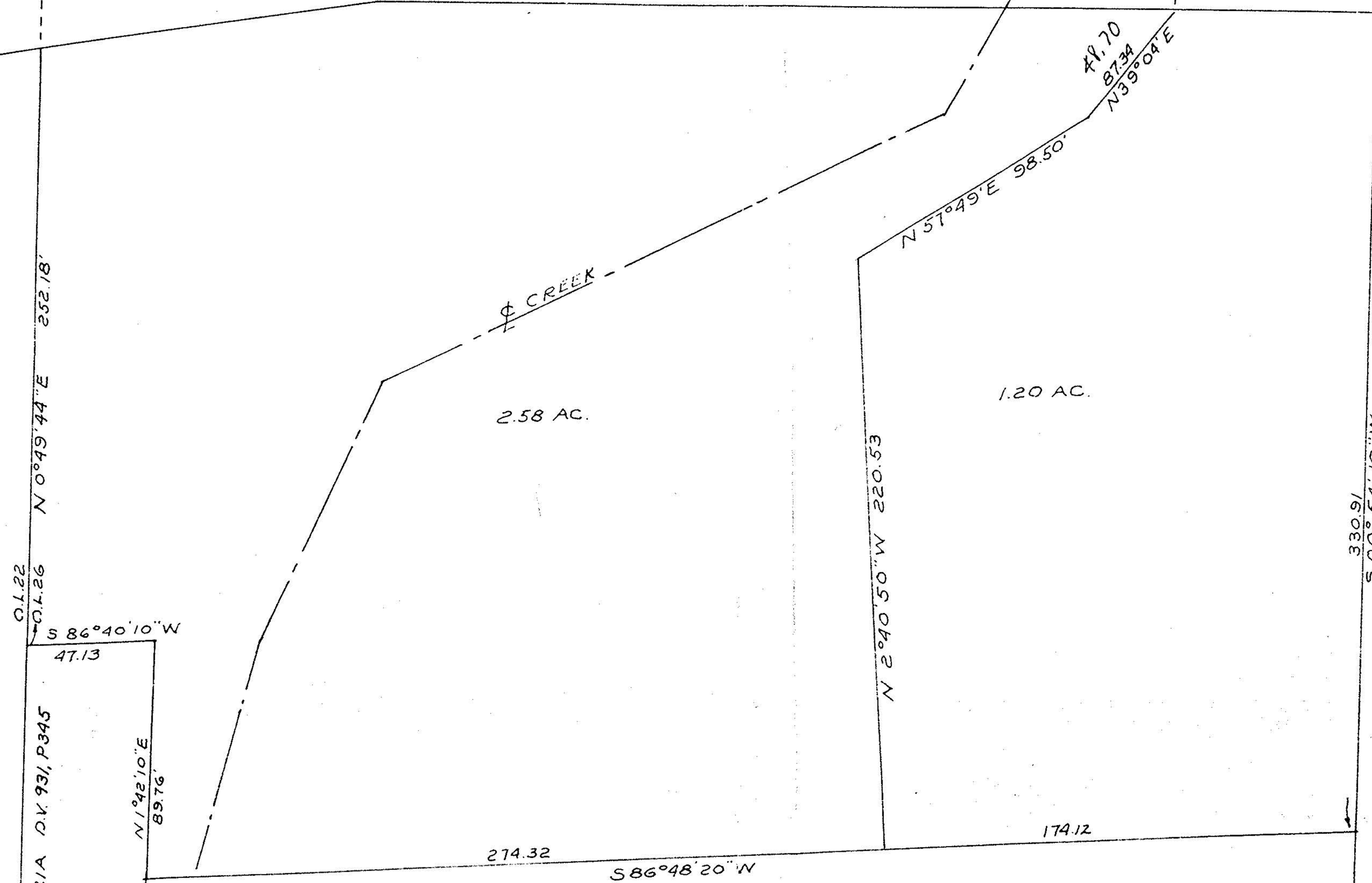


7000

φ BURNS ROAD 60'
N 89° 59' 50" W 309.40
N 81° 16' E 110.25
N 00° 00' 10" E 30.00
75.32



φ CREEK

2.58 AC.

1.20 AC.

HILL CREEK
V 24

0.1.22
0.1.26
S 86° 40' 10" W
47.13

LYRIA D.V. 931, P. 345
N 1° 42' 10" E
89.76'

330.91
500° 54' 10" W

SURVEY
No 26
CITY OF