

LOR. & W. VA. R.R.

N. 89° 21' 52" E. 2269.96

O.L. 20 BURRELL & DAY TRACT 5.66 Ac.
O.L. 8 BRACE TRACT 10.42 Ac.

PCL. # 2 (Rmdr)
16.0865 Ac. (New w/ Lake Ave)

DUE WEST 1875.69
1504.60 m.

FRANK YUHAS SUBN. No 2
P.V. 21 P 47

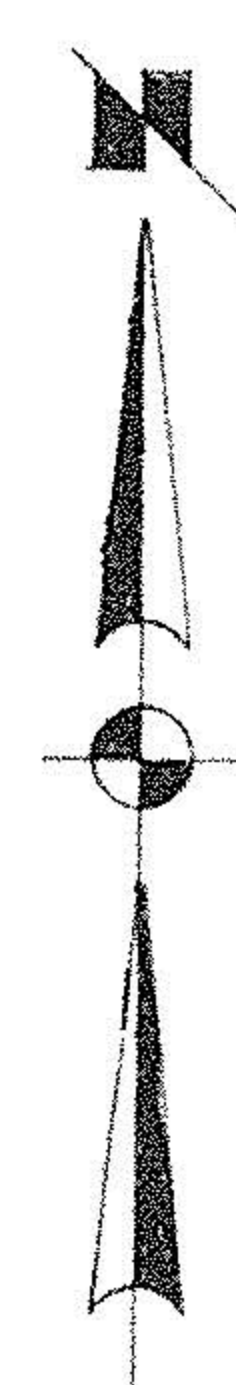
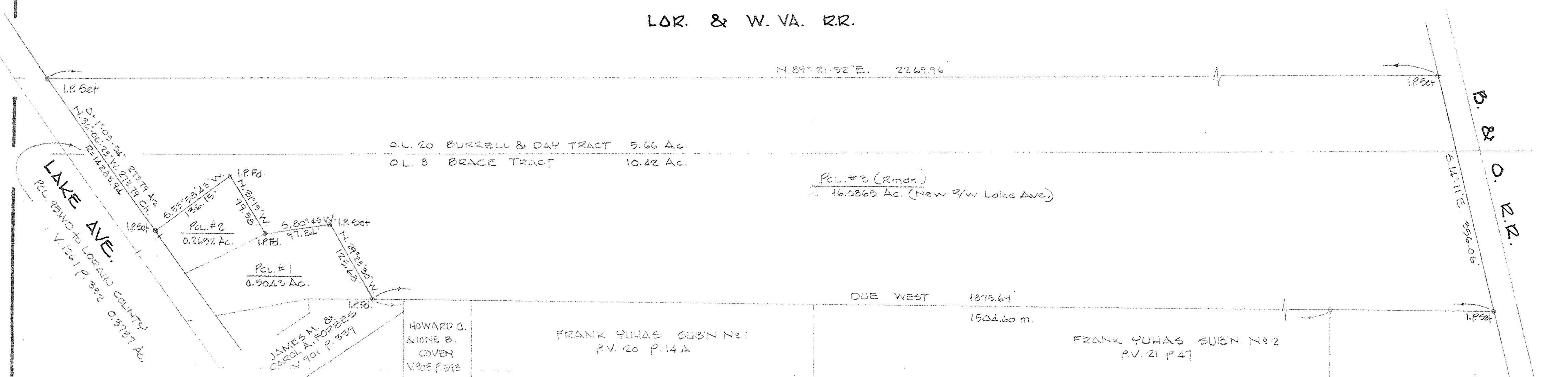
FRANK YUHAS SUBN. No 1
P.V. 20 P. 14 A

HOWARD C.
& IONE B.
COVEN
V 905 P. 593

JAMES M. &
CAROL A. FORBES
V 901 P. 329

PCL. # 2
0.2692 Ac.

PCL. # 1
0.5043 Ac.



#18631

APPROVED
LORAIN CO.
MAP DEPT.

DATE 9-14-89

PAGE 6-6 6-24

6-7 6-25

CAROLYN
BY FRANCIS

VOID
AFTER # 18631

SURVEY FOR

PATRICK FENIK

PART of O.L. 20 BURRELL & DAY TRACT AND PART of O.L. 8 BRACE TRACT
TOWNSHIP of ELYRIA COUNTY of LORAIN STATE of OHIO

SCALE 1"=100' AUG. 1989

LAUNDON • SIMON • CAHL & ASSOC.
ENGINEERS SURVEYORS

JOB No 89-1802

