

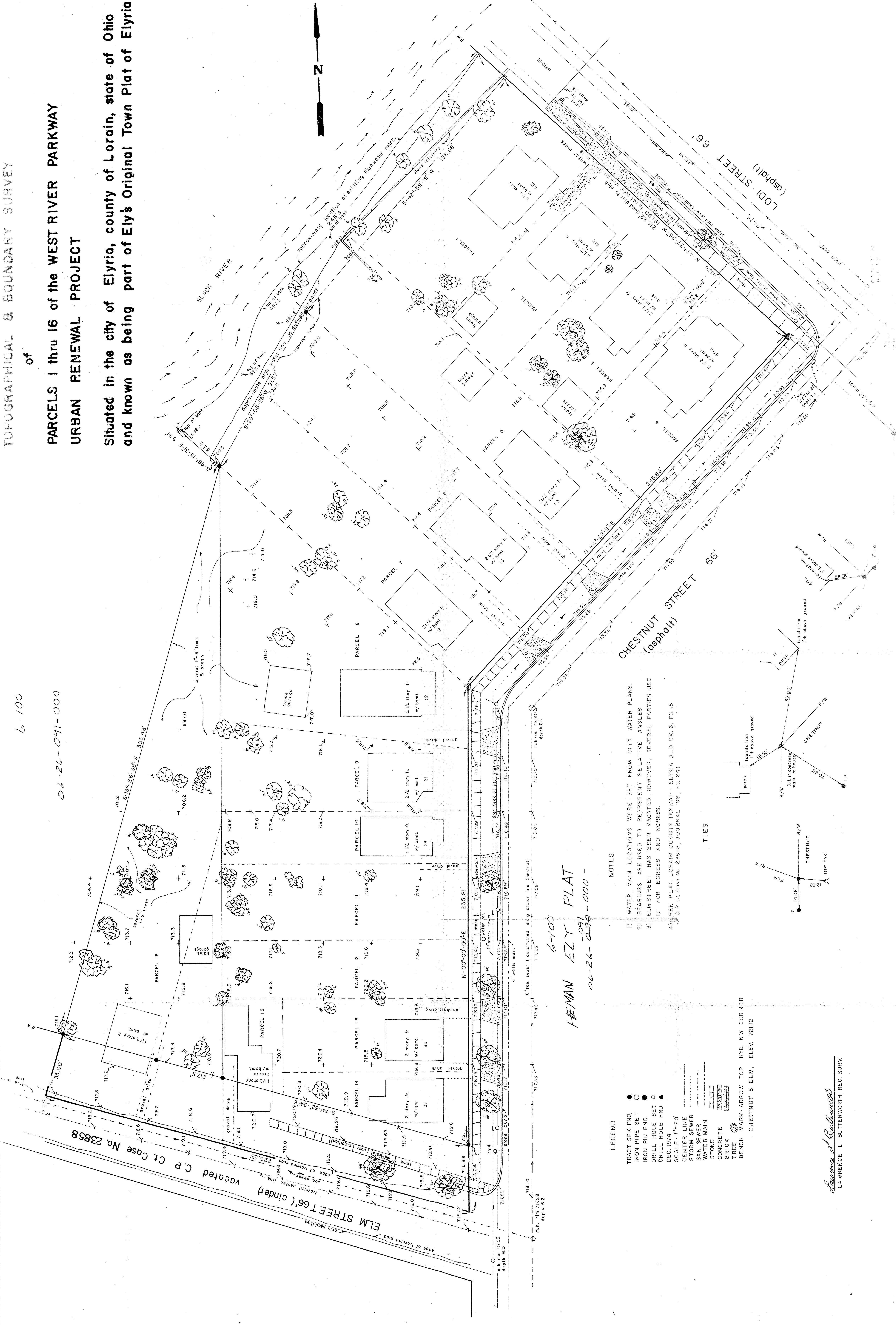
of

PARCELS 1 thru 16 of the WEST RIVER PARKWAY
URBAN RENEWAL PROJECT

Situated in the city of Elyria, county of Lorain, state of Ohio
and known as being part of Ely's Original Town Plat of Elyria

L-100

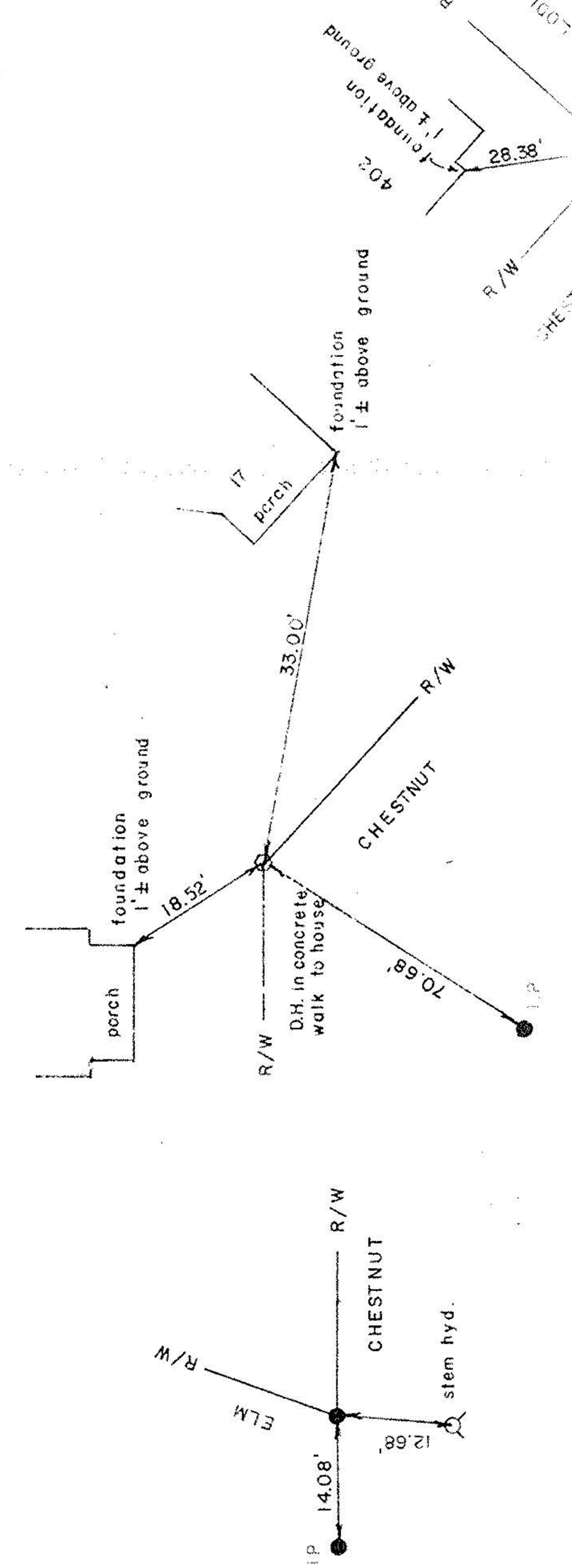
06-26-091-000



- NOTES
- 1) WATER MAIN LOCATIONS WERE EST FROM CITY WATER PLANS.
 - 2) BEARINGS ARE USED TO REPRESENT RELATIVE ANGLES
 - 3) ELM STREET HAS BEEN VACATED, HOWEVER, SEVERAL PARTIES USE IT FOR EGRESS AND INGRESS.
 - 4) SEE PLAT, LORAIN COUNTY TAXIMAP - ELYRIA, O.D. BK. 6, PG. 15
C.P. Ct. Case No. 23858, JOURNAL '89, PG. 241

6-100
HEMAN ELY PLAT
06-26-091-000

- LEGEND
- TRACT SPK FND
 - IRON PIPE SET
 - IRON PIN FND
 - △ DRILL HOLE SET
 - △ DRILL HOLE FND
 - DEC. 1974
 - SCALE: 1"=20'
 - CENTER LINE
 - STORM SEWER
 - SAN SEWER
 - WATER MAIN
 - STONE
 - CONCRETE
 - BRICK
 - TREE
 - BENCH MARK - ARROW TOP HYD. NW CORNER
 - CHESTNUT & ELM, ELEV. 72112



Lawrence L. Butterworth
LAWRENCE L. BUTTERWORTH, REG. SURV.