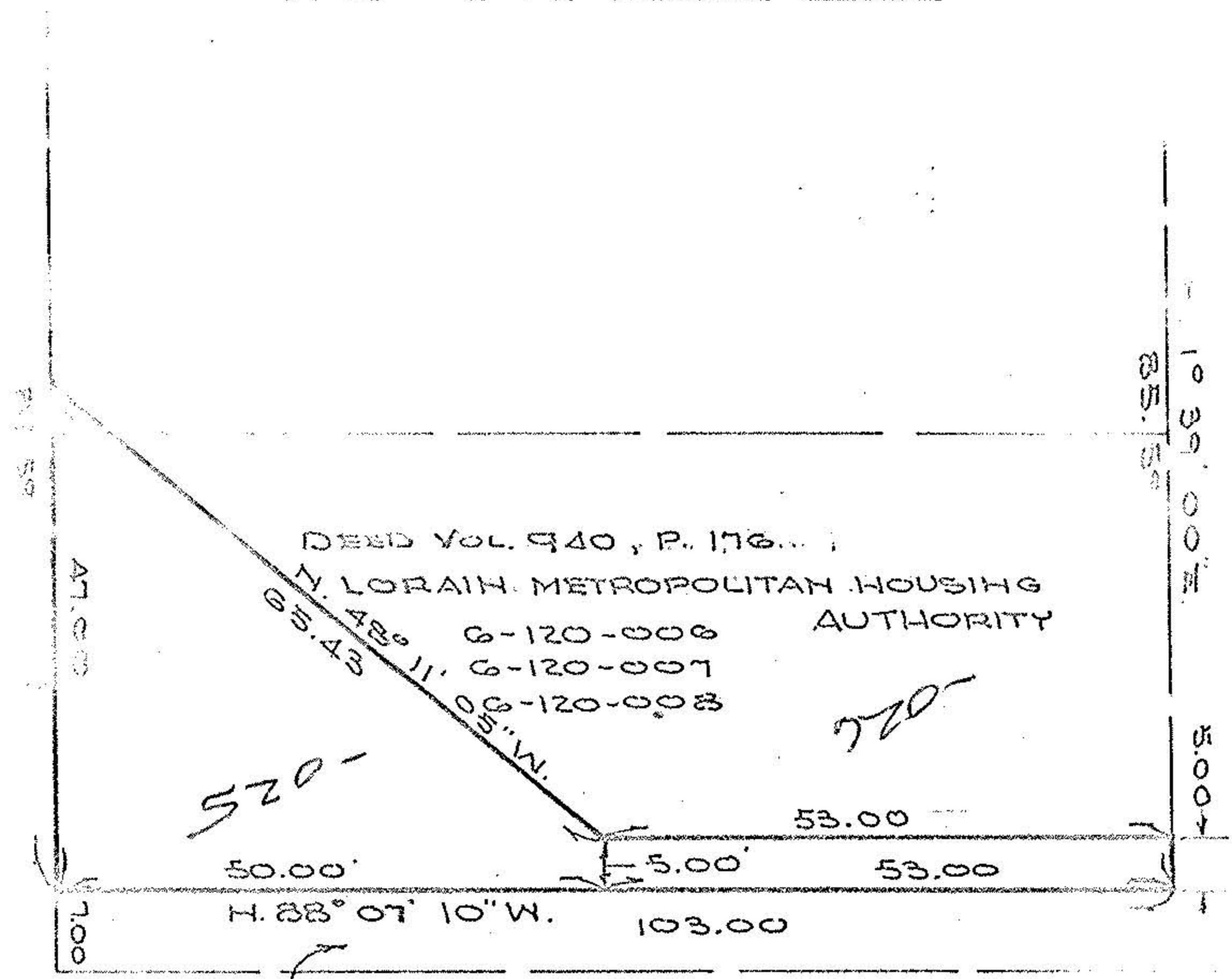


N. 33° 15' - 07' 10" W.
103'

EAST AVE.
71° 39' 00" E.

HIGH WATER LINE
BRANCH BLACK RIVER
FLOW



DEED VOL. 940, P. 176
N. LORAIN METROPOLITAN HOUSING AUTHORITY

6-120-006
6-120-007
6-120-008

520-

026

50.00' 53.00' 53.00'
H. 88° 07' 10" W. 103.00'

DEED VOL. 235, P. 282
THE CITY OF ELYRIA

E. 4TH. ST. 56.50'

DEED VOL. 24, P. 217
THE VILLAGE OF ELYRIA

49.50 DEED
56.50 MSD.

CITY OF ELYRIA, O.
DEPARTMENT OF PUBLIC SERVICE
E. 4TH ST. IMPROVEMENT
OFFICE OF THE CITY ENGINEER
SCALE: 1" = 20'

ELYRIA CITY
G-120
06-26-052-000
08.1967
025

H. 88° 07' 10" W.

2324

6-120