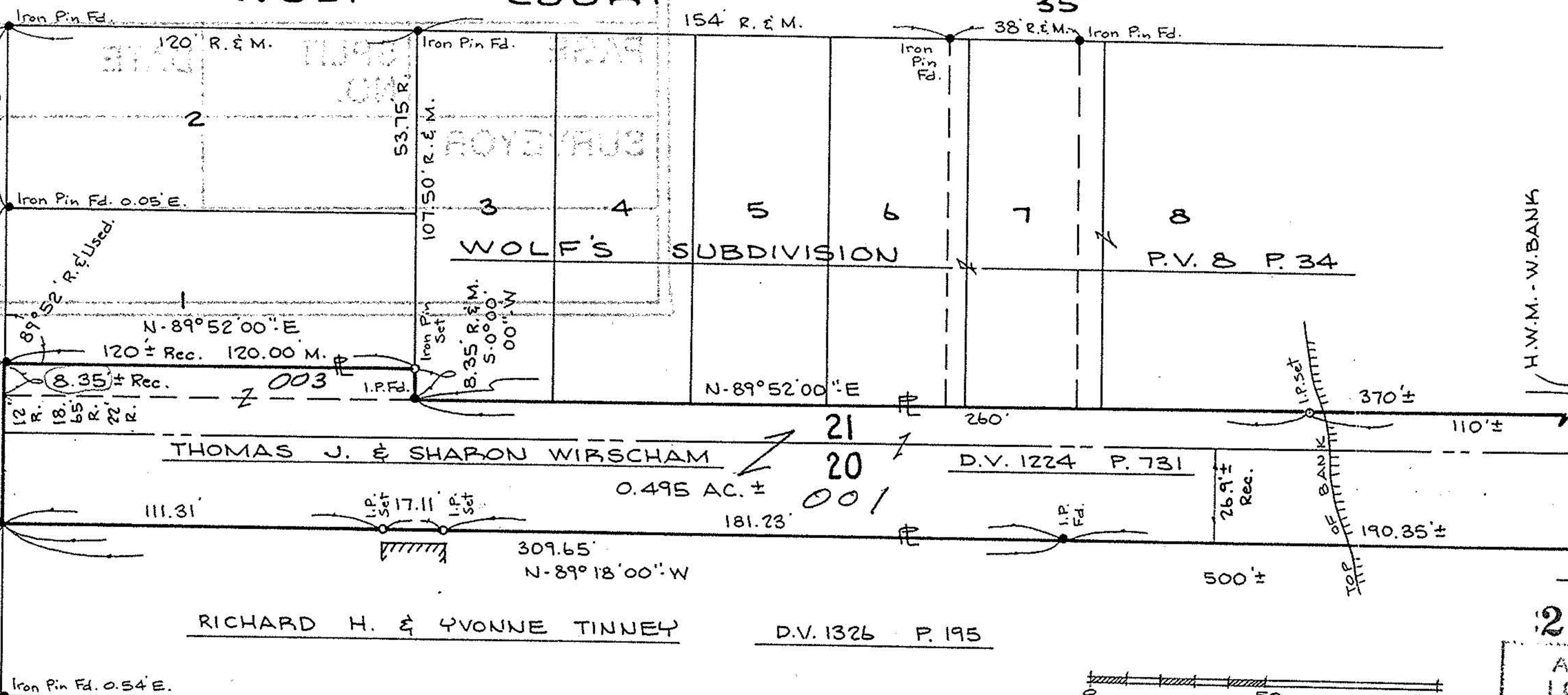


66  
AVENUE

(Assumed)  
N-0°00'00"-E

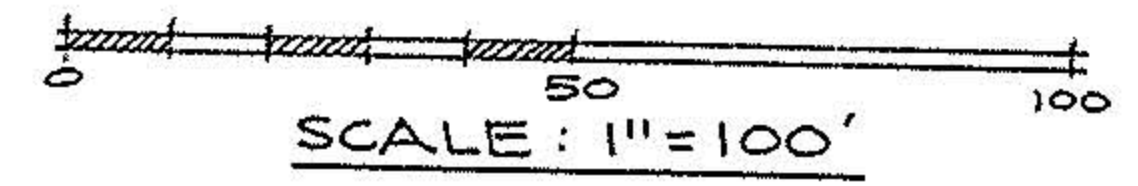
EAST

WOLF COURT



H.W.M. - W. BANK

BLACK RIVER



20808 A

APPROVED LORAIN CO MAP DEPT
DATE 7-15-94
PAGE 6-138
CAROLYN TAPKUS
# 20808 A

**BOUNDARY SURVEY**

PART OF SUBLot NO. 1 IN WOLF'S SUBDIVISION &  
 PARTS OF ORIGINAL ELYRIA TOWNSHIP LOTS 20 & 21  
 BETWEEN THE BRANCHES OF THE  
 BLACK RIVER  
 CITY OF ELYRIA COUNTY OF LORAIN STATE OF OHIO

*David L. Elwell*  
 DAVID L. ELWELL L.S.#6333



PREPARED BY: **KS ASSOCIATES INC.**  
 ENGINEERS SURVEYORS