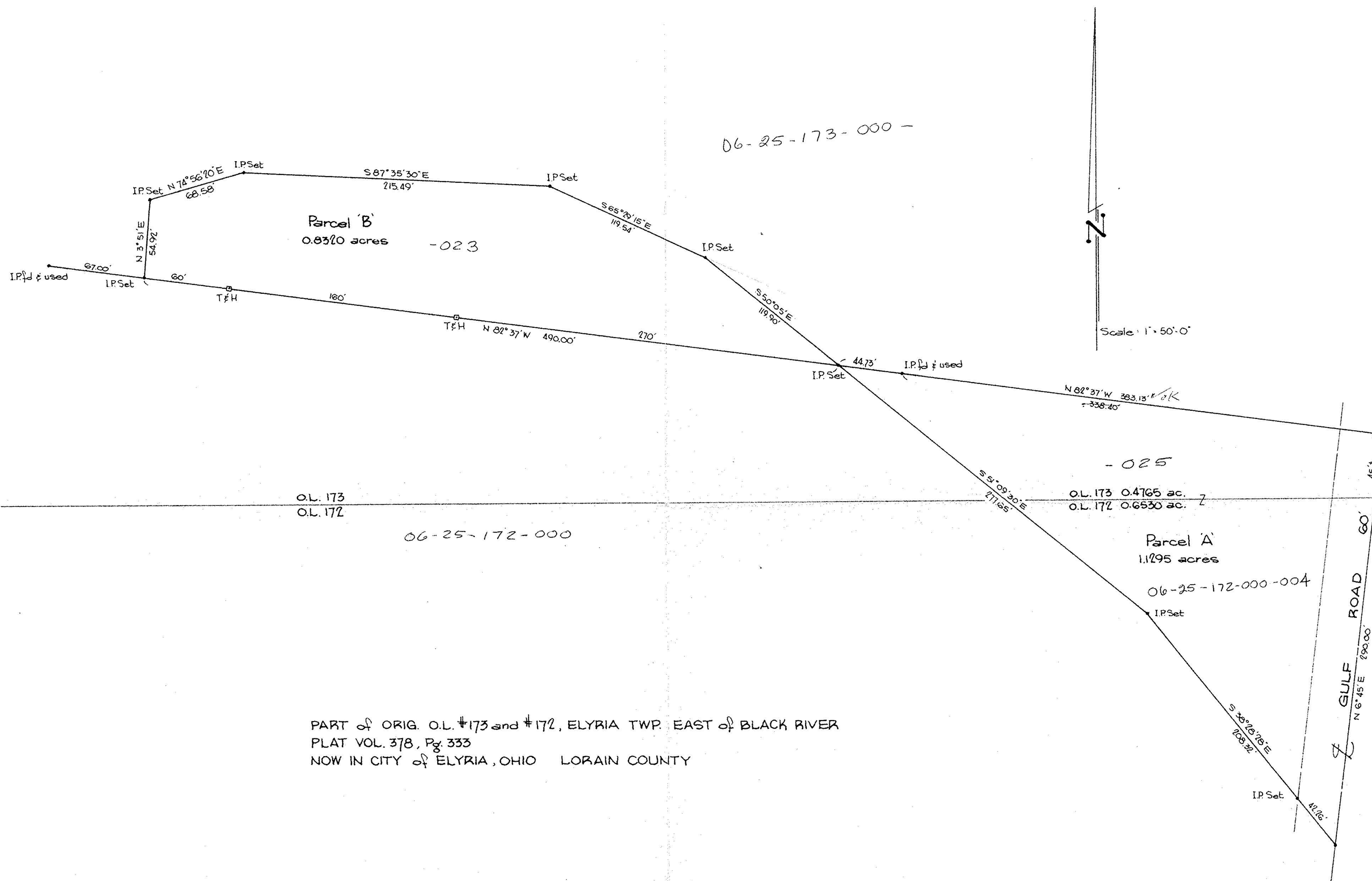


00-571-25-00
00-571-25-00

06-25-172
173

6-50



PART of ORIG. O.L. #173 and #172, ELYRIA TWP. EAST of BLACK RIVER
 PLAT VOL. 378, Pg. 333
 NOW IN CITY of ELYRIA, OHIO LORAIN COUNTY

Place of Beginning
 #9876
 6-50

McGLINCHY and ASSOCIATES
 PROFESSIONAL ENGINEERS & SURVEYORS
 538 WEST BROAD ST. ELYRIA, OHIO
 MAY 12, 1976 # 76899

E/R 6-25-172
 00-571-25-00
 00-571-25-00