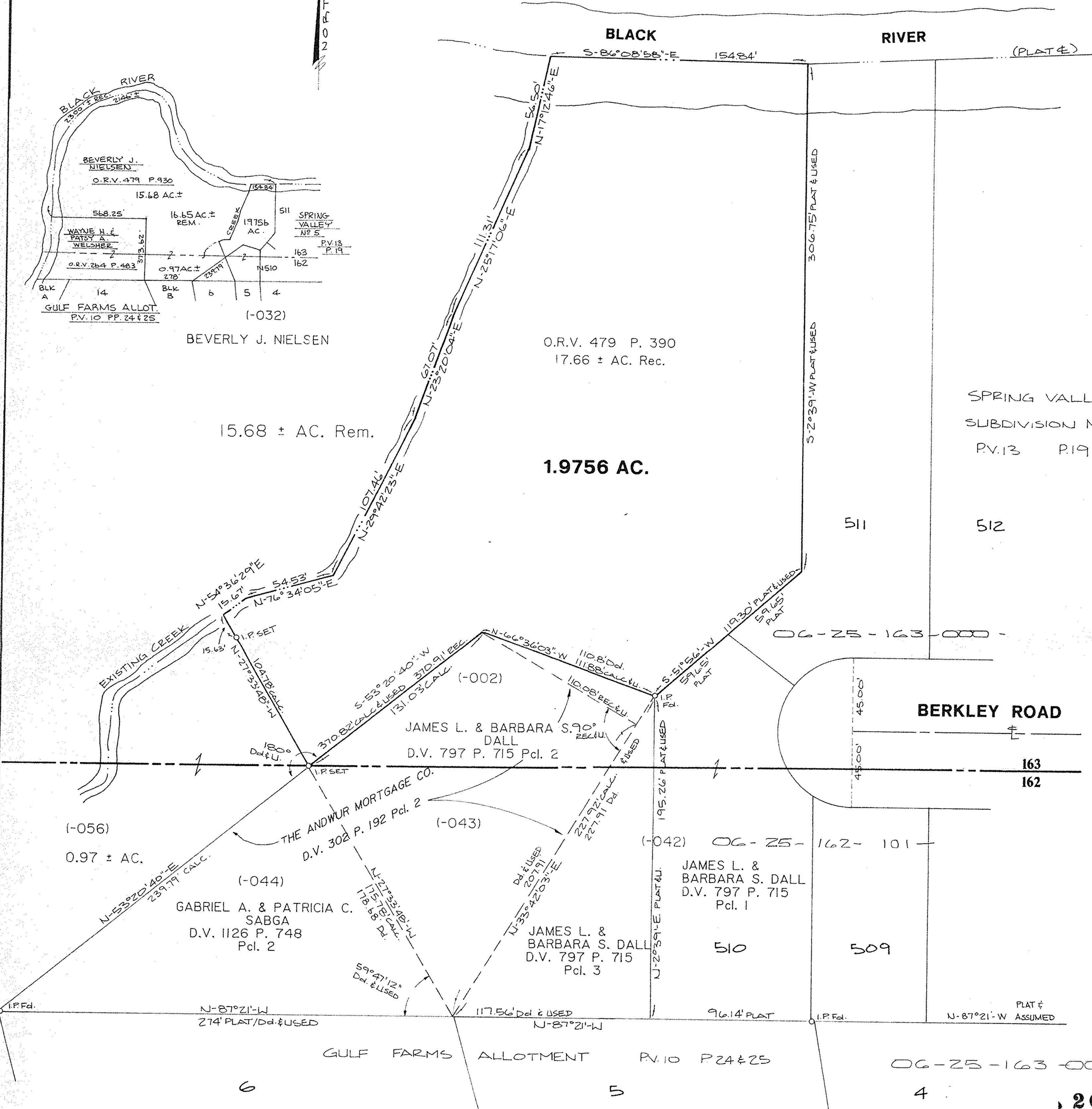
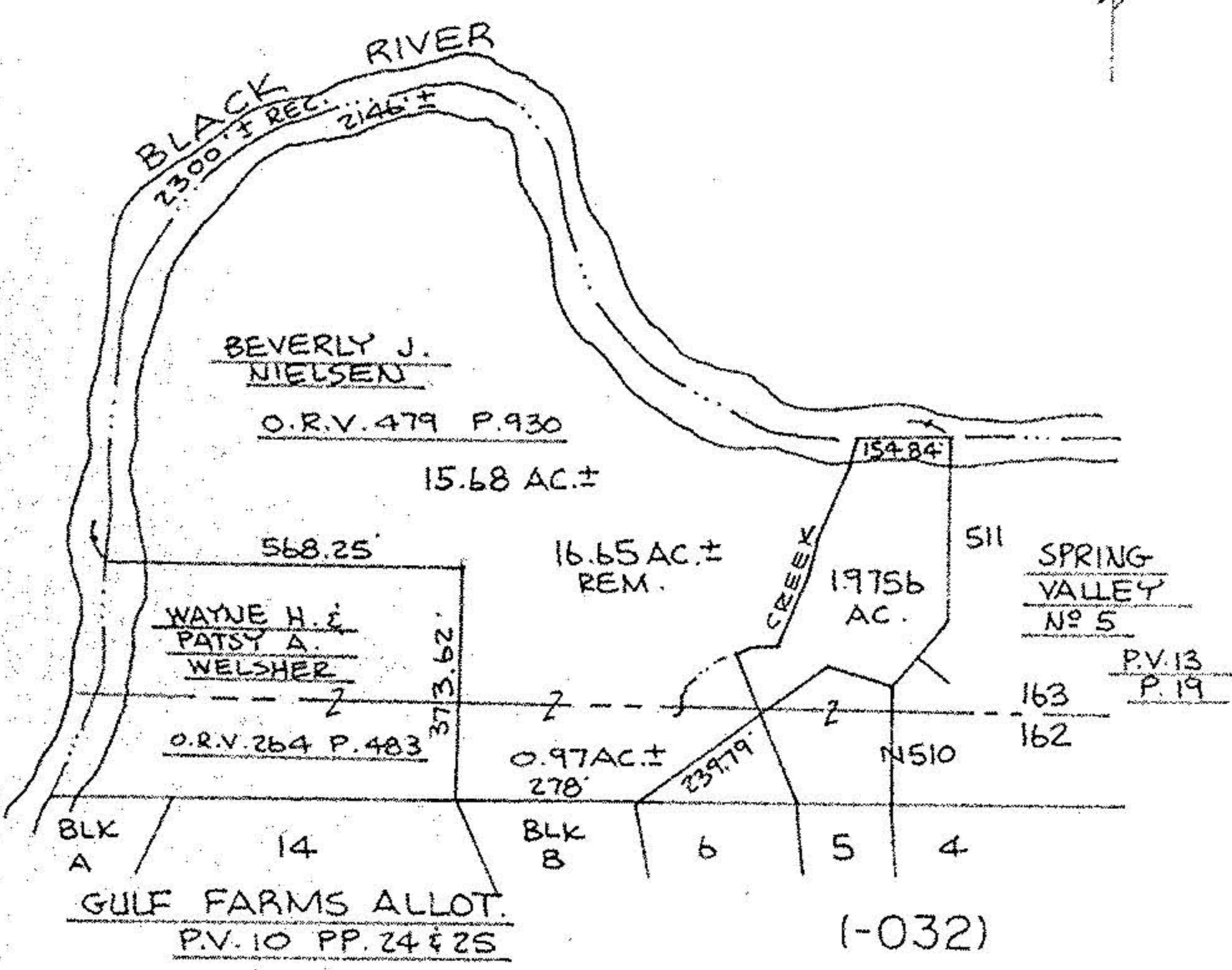




INTERNET



BOUNDARY SURVEY

OF PART OF
 ELYRIA TOWNSHIP ORIGINAL LOTS 162 & 163
 EAST OF BLACK RIVER
 CITY OF ELYRIA COUNTY OF LORAIN
 STATE OF OHIO

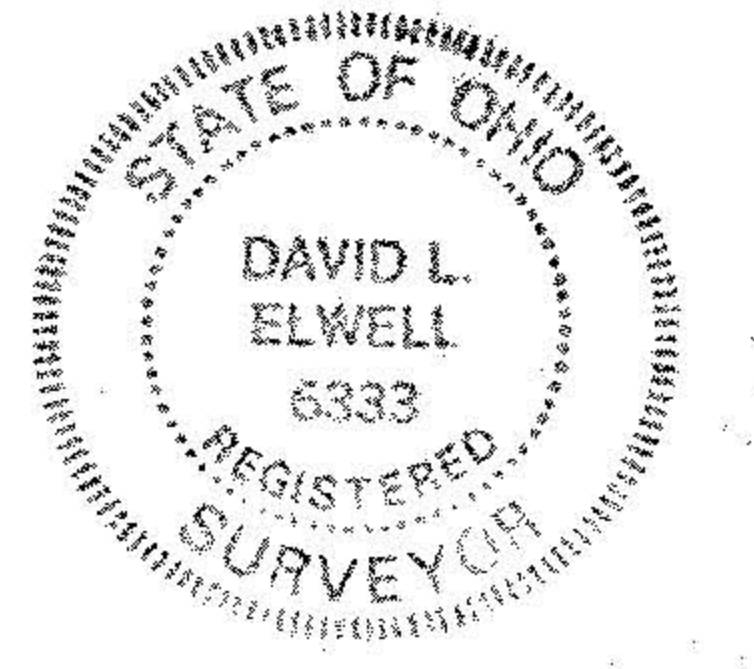
SCALE: 1" = 40'

NOV. 24, 1992

David L. Elwell
 REG. SURVEYOR, NO. 6333

PREPARED BY:

KS ASSOCIATES INC.
 ENGINEERS SURVEYORS



20230
 APPROVED
 LORAIN CO.
 MAP DEPT.
 DATE 1-22-93
 PAGE 666, 667
 CALON
 BY FRANCIS
 VOID AFTER # 20230