

**Note:**  
 Bearings and dimensions shown in parentheses and followed by "REC." were taken from the recorded Plat of Block "A" of Gulf Farms allotment part of original lot 162 east of Black River recorded in Volume 10 of maps Page 24 of Lorain County records.  
 To correct recorded bearings to agree with observed bearings add 40 seconds to N.E. and S.W. recorded bearings and subtract 40 seconds from N.W. and S.E. recorded bearings.

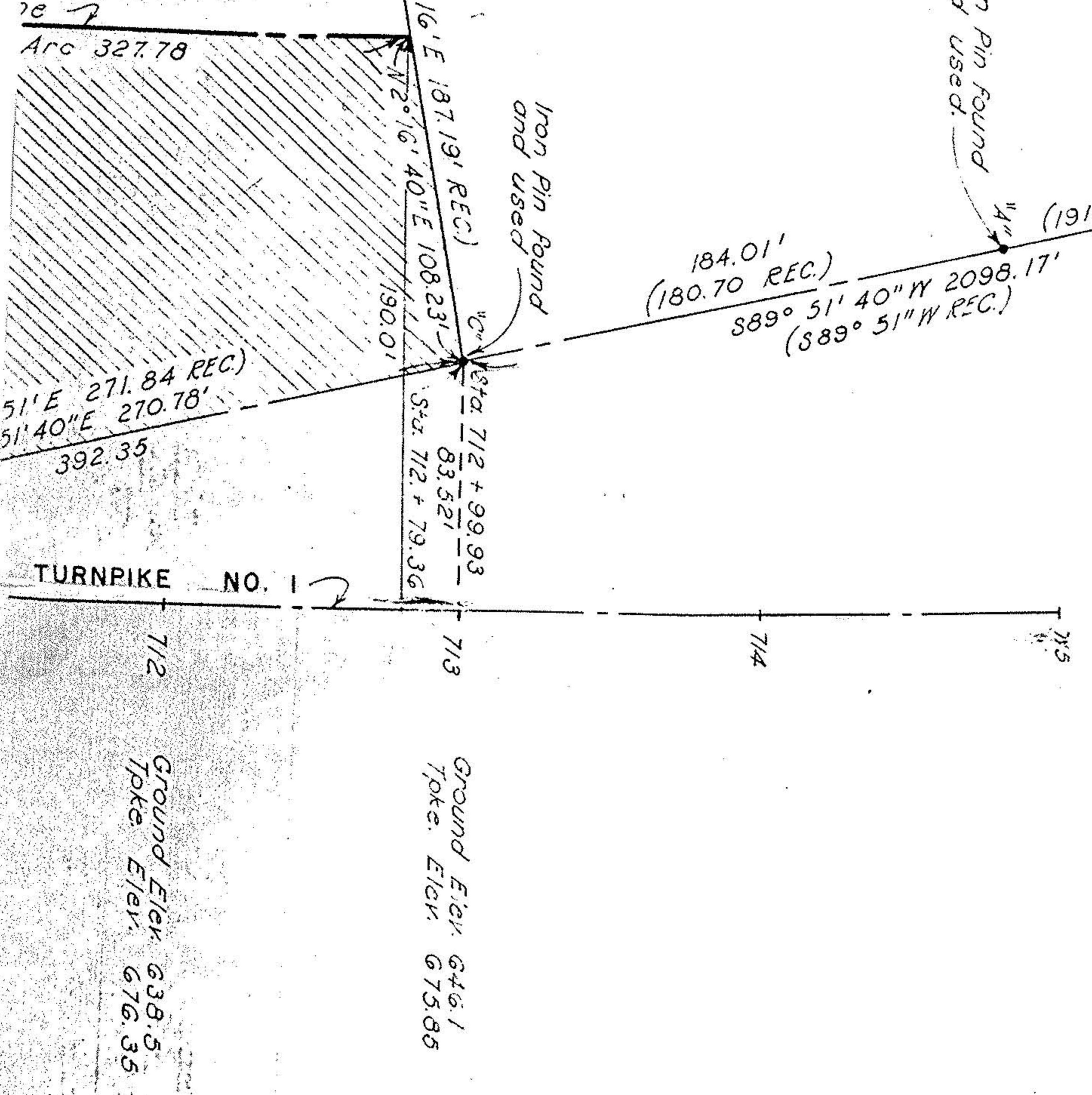
**BLOCK "A"**  
**OF GULF FARMS ALLOTMENT**  
**PART OF ORIGINAL LOT 162 EAST OF**  
**BLACK RIVER ELYRIA, LORAIN CO. OHIO.**  
 Total Area of Block "A" 5,955 Acres (REC.)  
 Total Area of Parcel 119 D 1,216 Acres (Computed)  
 Remainder 4,739 Acres

**RANDOM LINE BY**  
**KNAPPEN-TIPPETTS-ABBETT-MCCARTHY**  
**AUG. 1953**

Survey line as shown on recorded Plat of Block "A" Gulf Farms allotment

of Black River by survey of Knapp-Abbett-McCarthy August 1953.

of Gulf Road and S.E. corner of original Elyria Township Lot No. 162 East of Black River



Ground Elev. 646.1  
 Topo. Elev. 675.65

Ground Elev. 638.5  
 Topo. Elev. 676.35