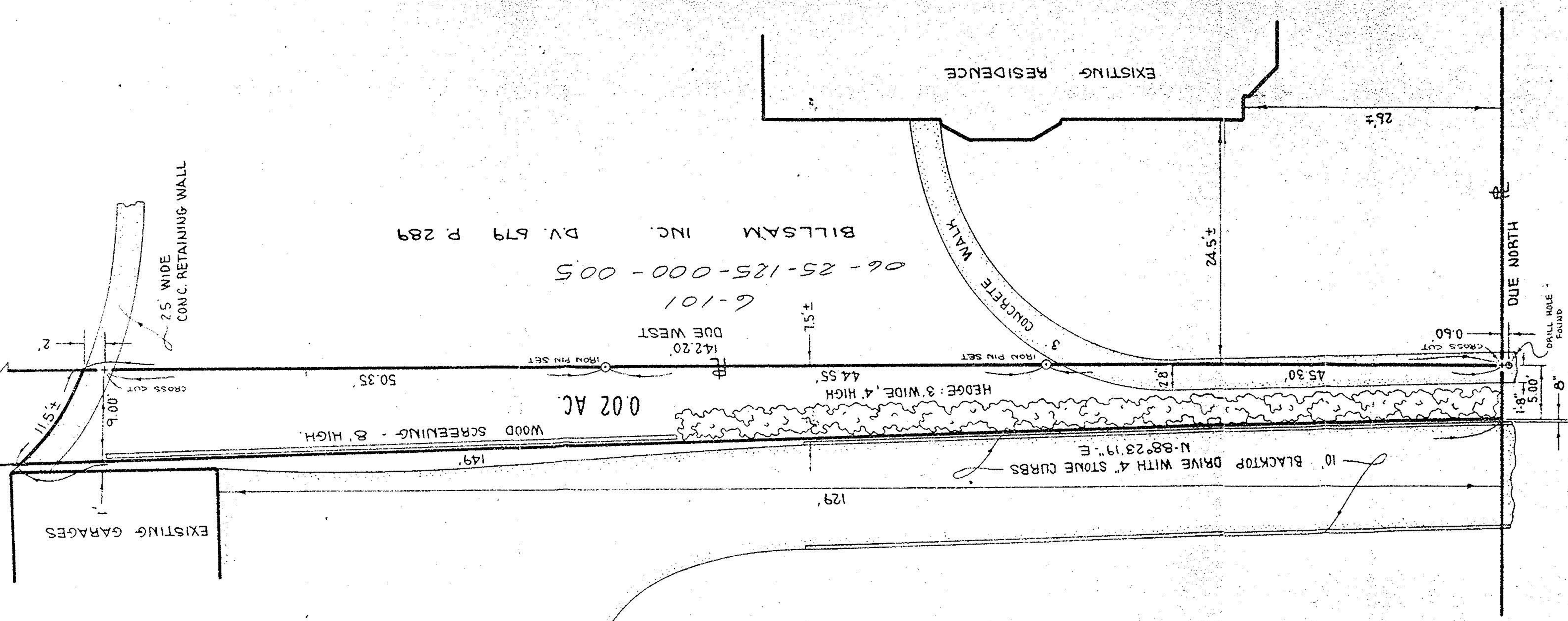


6-101
06-25-006

EAST BRANCH
BLACK RIVER
HIGH WATER
10' ±

Miller & P. O'Connell
6-101



06-25-125-000-005
6-101
BILLSAM INC. DV. 679 P. 289

WESTERN RESERVE MORTGAGE CORP. DV. 1001 P. 595

6-101
06-25-006

WASHINGTON AVENUE 100'

LOCATION SURVEY

OF PART OF
MILL LOT ~ ELYRIA TOWNSHIP ~ E. OF BLACK RIVER
CITY OF ELYRIA COUNTY OF LORAIN STATE OF OHIO



SCALE: 1" = 10' JUNE 11, 1975

PREPARED BY
KLEINODER - SCHMIDT & ASSOC.
REGISTERED ENGINEERS & SURVEYORS
ELYRIA OHIO