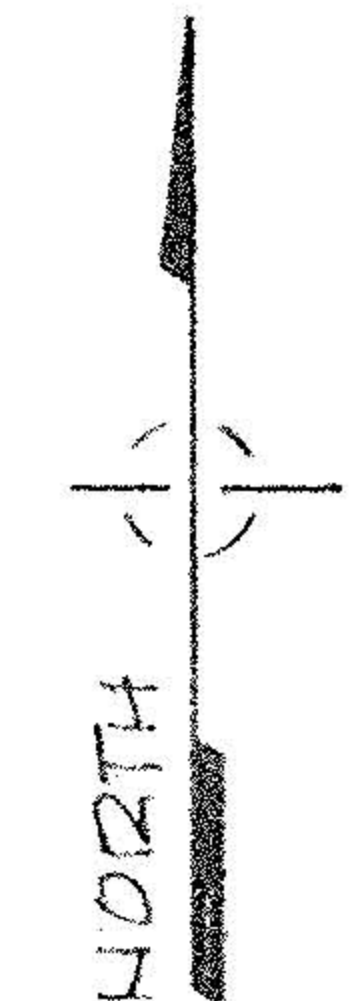
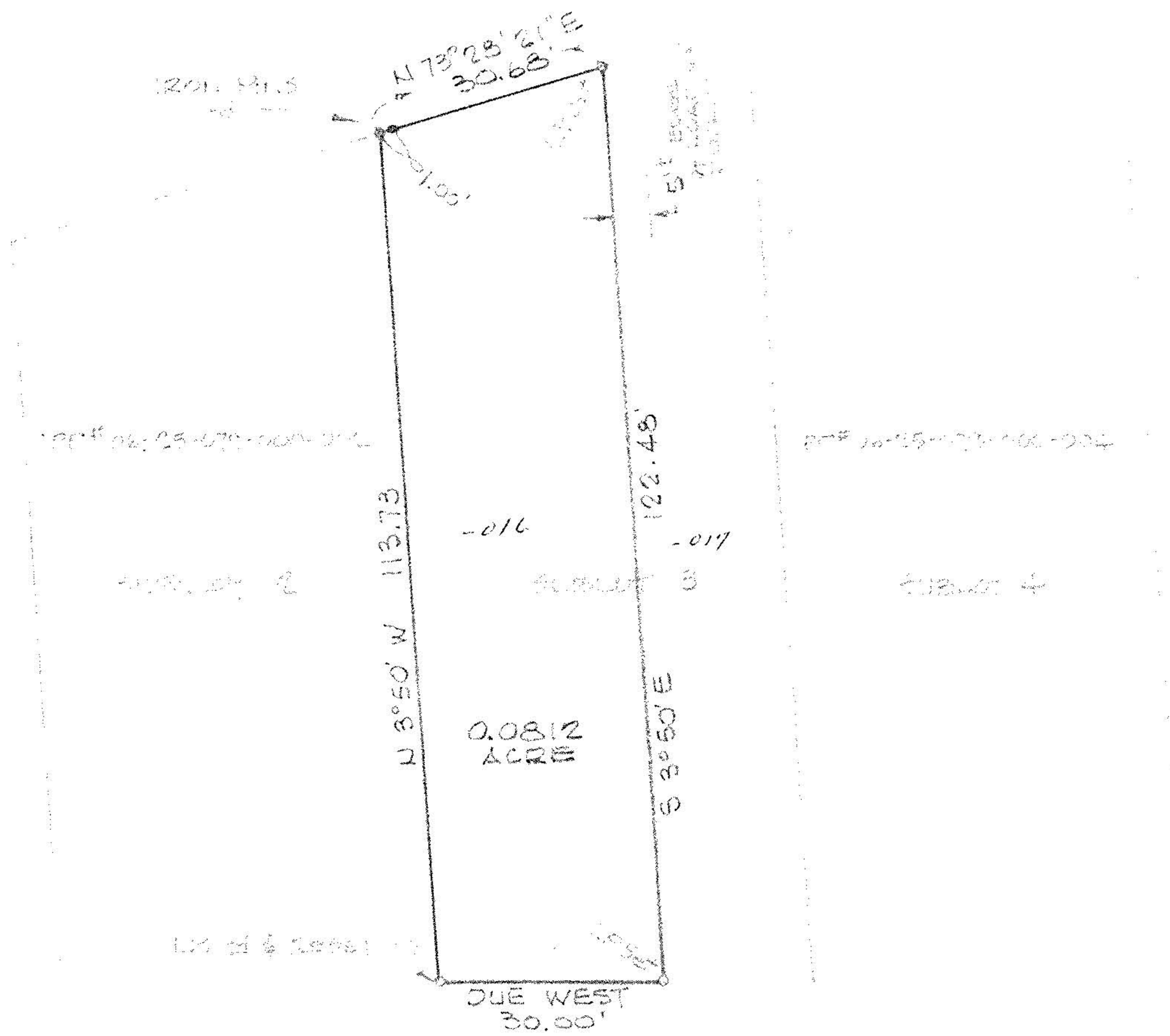


#14006



SCALE: 1" = 20'

#14006

| | |
|-------------------------------------|-------|
| APPROVED LORAIN CO. MAP DEPT. | |
| DATE 1-15 81 | |
| PAGE 6-123 | |
| BY <i>Carolyn A</i> | |
| VOID AFTER | 14006 |

MAP of PROPOSED PARCEL SPLIT

PREPARED FOR UNDERMERE STORAGE and MOVING CO.
 PART of SUBLot 3 in GEO. H. ELY'S PLAT of an ADDITION
 TO THE CITY of ELYRIA - PLAT VOLUME 5, PAGE 2
 CITY of ELYRIA LORAIN COUNTY OHIO

McGLINCHY and ASSOCIATES INC.
 PROFESSIONAL ENGINEER and SURVEYORS
 110 1/2 MIDDLE AVE ELYRIA, OHIO
 SEPTEMBER 1980 # 806443