

Correct 10/17

LAUNDON - HUFFMAN - SIMON

CIVIL ENGINEERS - SURVEYORS

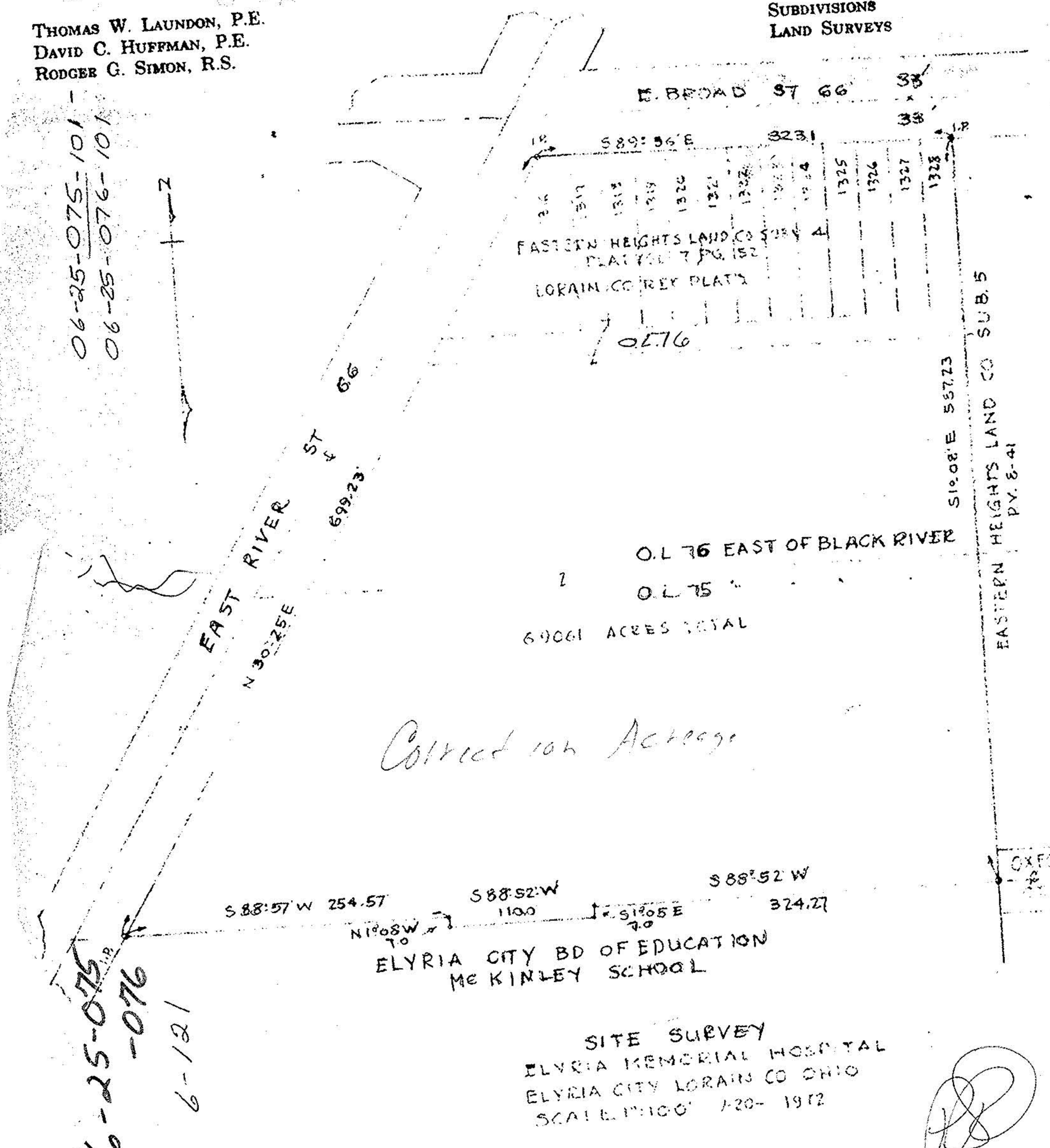
517 BROAD ST. ELYRIA, OHIO

MUNICIPAL ENGINEERING
SUBDIVISIONS
LAND SURVEYS

THOMAS W. LAUNDON, P.E.
DAVID C. HUFFMAN, P.E.
RODGER G. SIMON, R.S.

*06-25-075-101 -
06-25-076-101*

*6-25-075
-076
6-121*



EASTERN HEIGHTS LAND CO SUB. 5
PLAT 7 PG. 152
LORAIN CO REY PLATS

O.L. 76 EAST OF BLACK RIVER
O.L. 75 "

69061 ACRES TOTAL

Correct 10/17 Acreage

S 88° 57' W 254.57
N 1° 08' W 70
S 88° 52' W 1100
S 88° 52' W 324.27
S 1° 05' E 70

ELYRIA CITY BD OF EDUCATION
ME KINLEY SCHOOL

SITE SURVEY
ELYRIA MEMORIAL HOSPITAL
ELYRIA CITY LORAIN CO OHIO
SCALE 1"=100' 7-20-1912