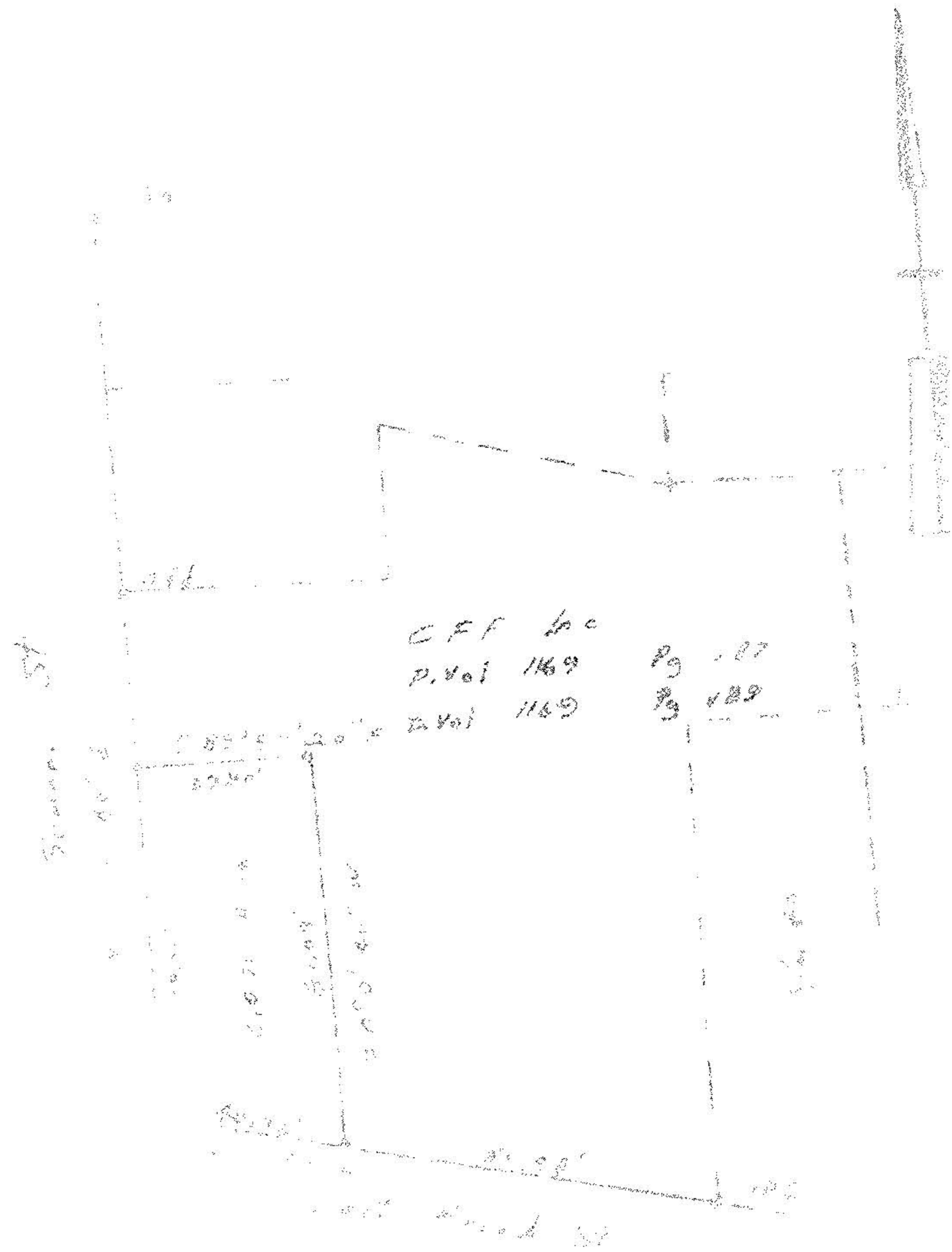


26-25-970 107

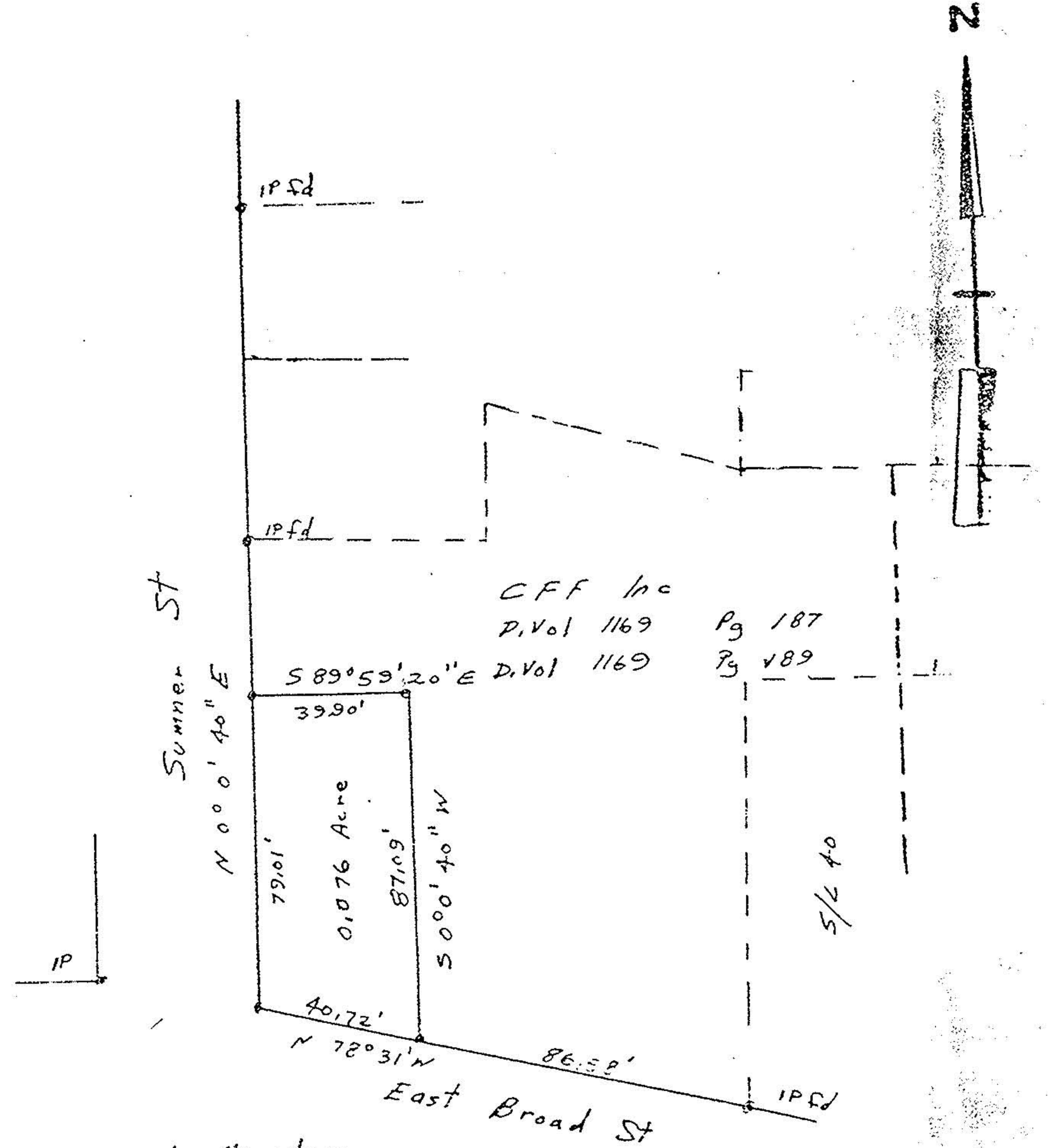


CFF Inc
 P. Vol 1169 Pg 187
 D. Vol 1169 Pg 189

Survey for CFF Inc
 Part of Original Lot 70
 East of the Black River
 Original Elyria Twp
 City of Elyria

6-122

RRS set



CFF Inc
 P. Vol 1169 Pg 187
 D. Vol 1169 Pg 189

Bearings on a assumed Meridian

John Poyzner
 Surveyor
 # 5292

Survey for CFF Inc
 Part of Original Lot 70
 East of the Black River
 Original Elyria Twp
 City of Elyria
 Lorain County Ohio
 Oct 9, 1982 Scale 1" = 40'