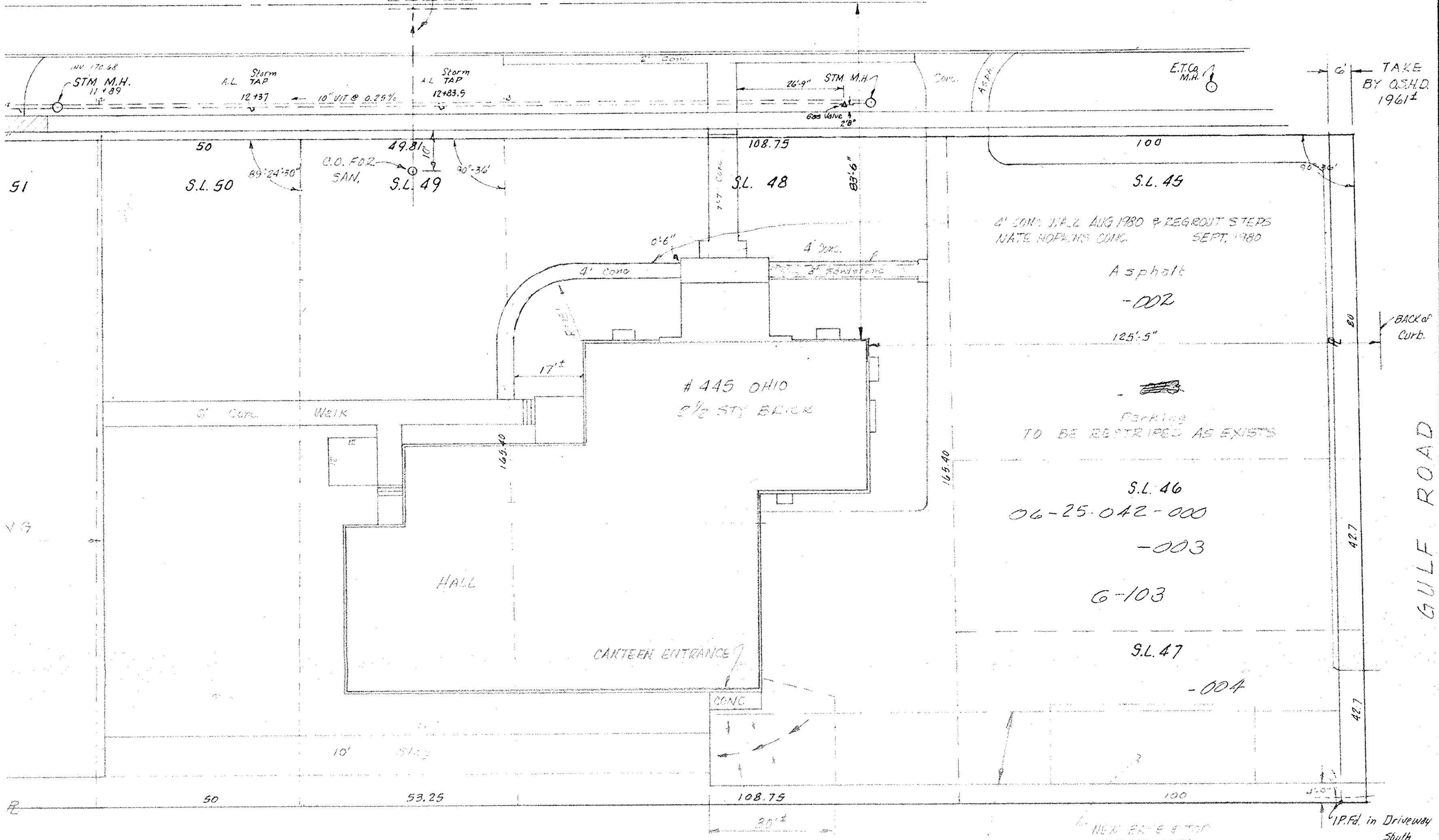


REET 66'

6" SANITARY TO 24" SEWER
IN E OHIO ST. 260' WEST OF M.H. IN GULF ROAD.



TAKE BY O.S.H.D. 1961±

4' CONC. VIA 2" AUG 1980 & REGR. STEPS
NATE HOPKINS CONC. SEPT, 1980

Asphalt
-002

PARKING
TO BE RESTRICTED AS EXISTS

S.L. 46
06-25-042-000
-003

6-103

S.L. 47
-004

AREA TO BE DEMOLISHED
INSTALL NEW SUBBASE & TOP
RESURF FOR DRIVEWAY

TO BE MARKED "PARKING"
"NO PARKING" RESURF. & PAINT

NEW BASE & TOP
FALL 1979

IP.Fd. in Driveway
South
1'-3" Behind
S.W.