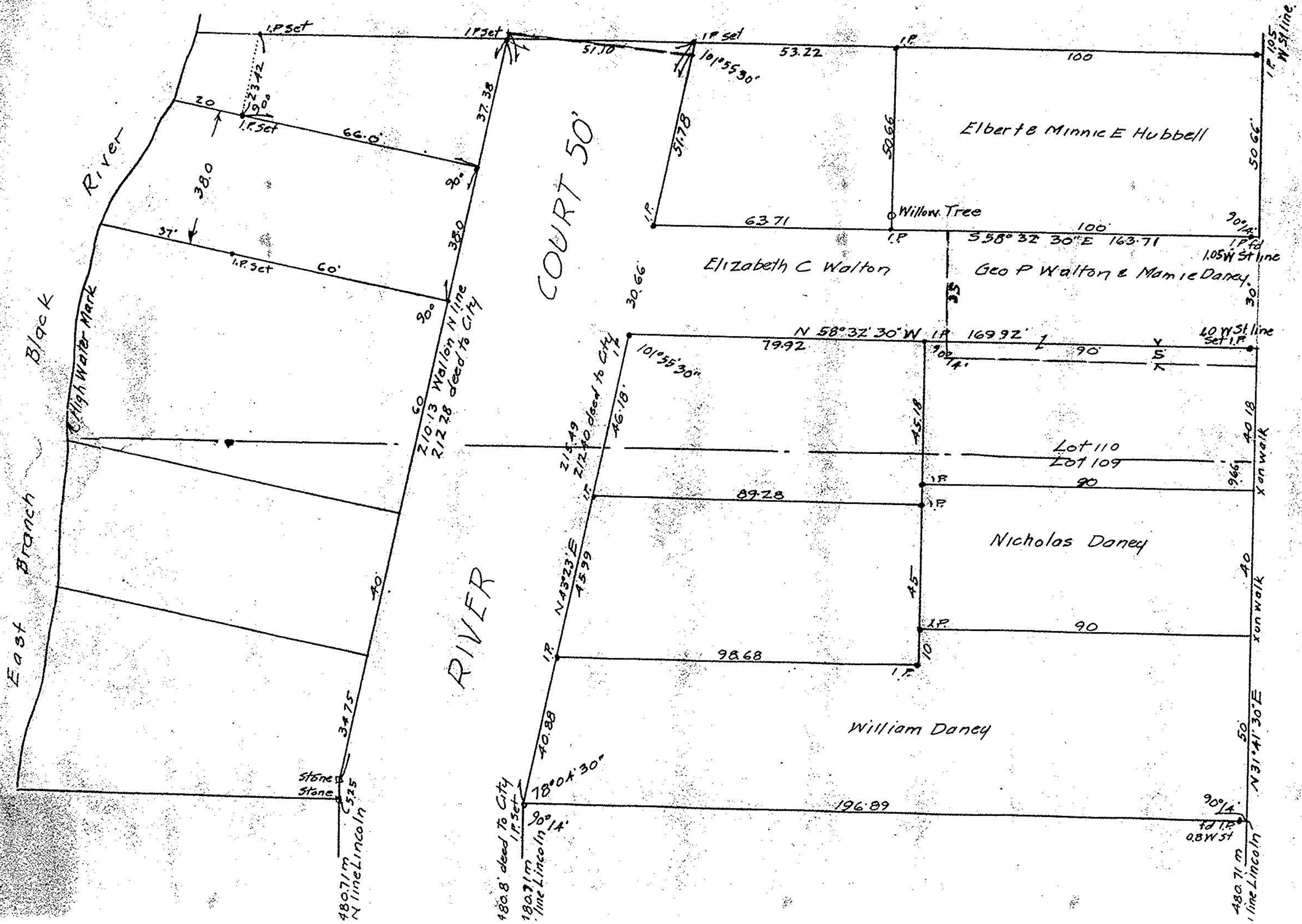


DUPLICATE

SURVEY IN ORIGINAL LOTS 109-110
E OF E BRANCH OF BLACK RIVER
ELYRIA LORAIN CO OHIO
March 30 1922 Scale 1"=30'
Warden & Laundon Engrs.

Note This tracing made
from a B.P. loaned us by
Henry J. Neipfoot - 5/20-24.
O. F. Palmer
T.M.D.



EAST RIVER ST. 66

Used N.E. Cor. Broad & E. River
Used N. side Princeton Ave.