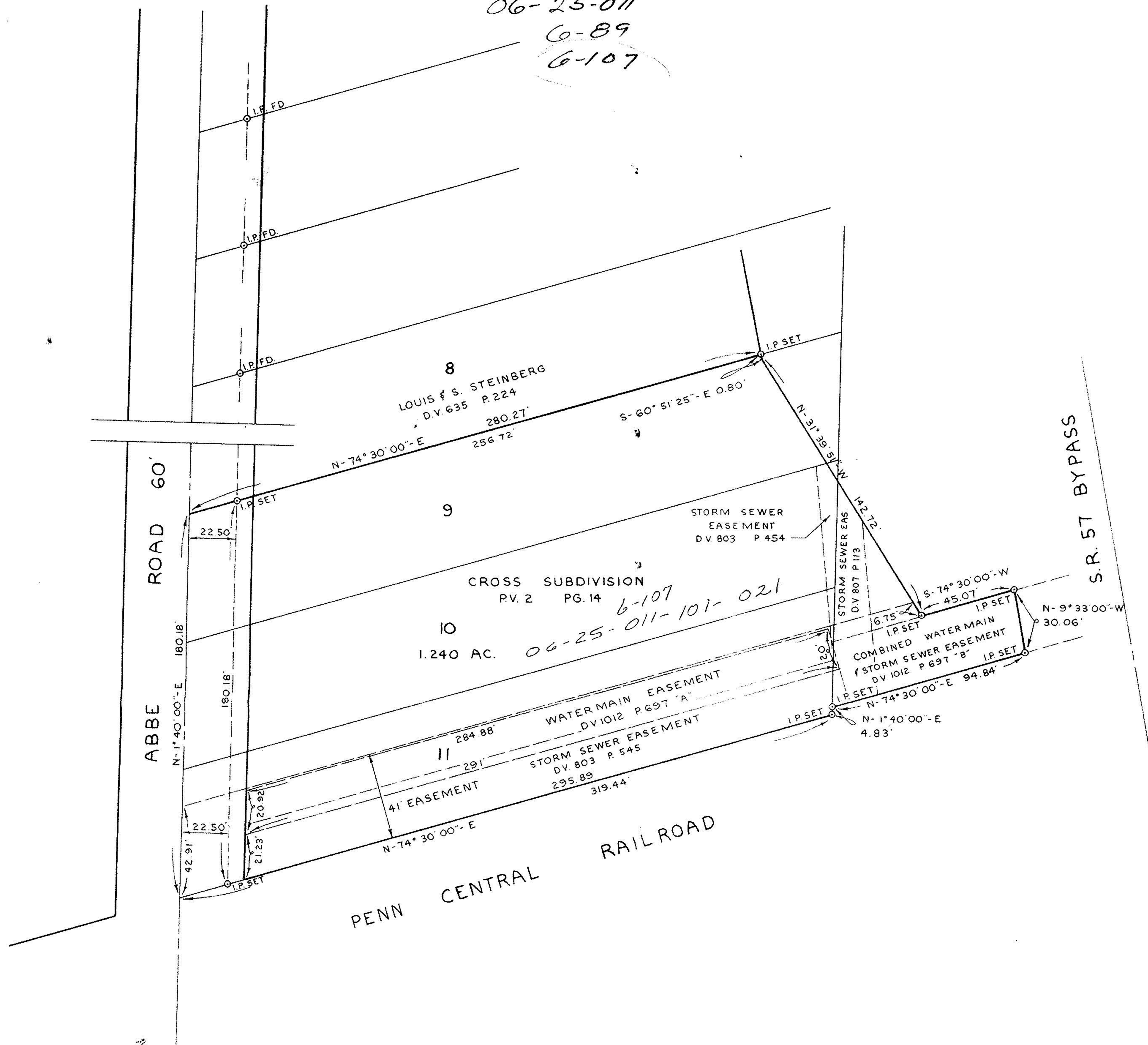


06-25-011

6-89

6-107



PROJECT

SURVEY

OF PART OF

ORIGINAL ELYRIA TOWNSHIP LOT NO. 11 EAST OF THE RIVER
CITY OF ELYRIA COUNTY OF LORAIN STATE OF OHIO

Rev.

9-16-76

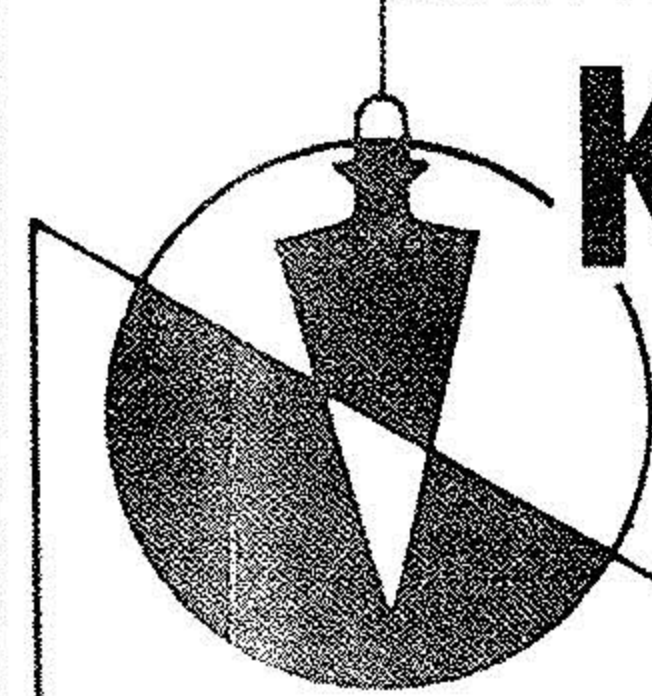
Drawn by: DLH

Checked by:

App. by:

Scale: 1" = 40'

Date: 8-27-76



KLEINOEDER-SCHMIDT
and ASSOCIATES

ENGINEERS — SURVEYORS — CONSULTANTS in LAND PLANNING

ELYRIA - NORWALK - MEDINA

OHIO

REFERENCES

F.B. 19 P. 25
69-407

SHEET NO.

1 of 1

JOB NO.

76-247

Prepared for: THE BENDIX CORPORATION