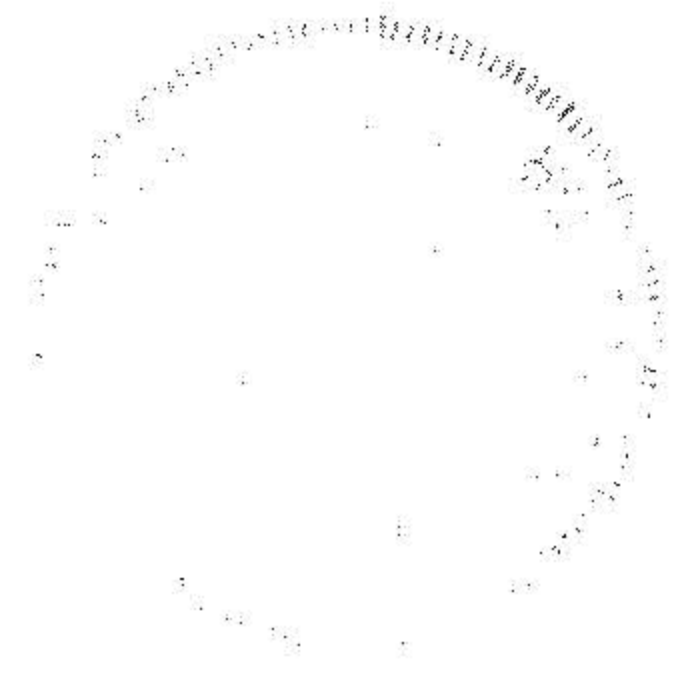


SURVEY

OF PART OF ORIGINAL ELYRIA TWP LOT N<sup>o</sup> 7 EAST OF BLACK RIVER STATE OF OHIO COUNTY OF LORAIN

CITY OF ELYRIA

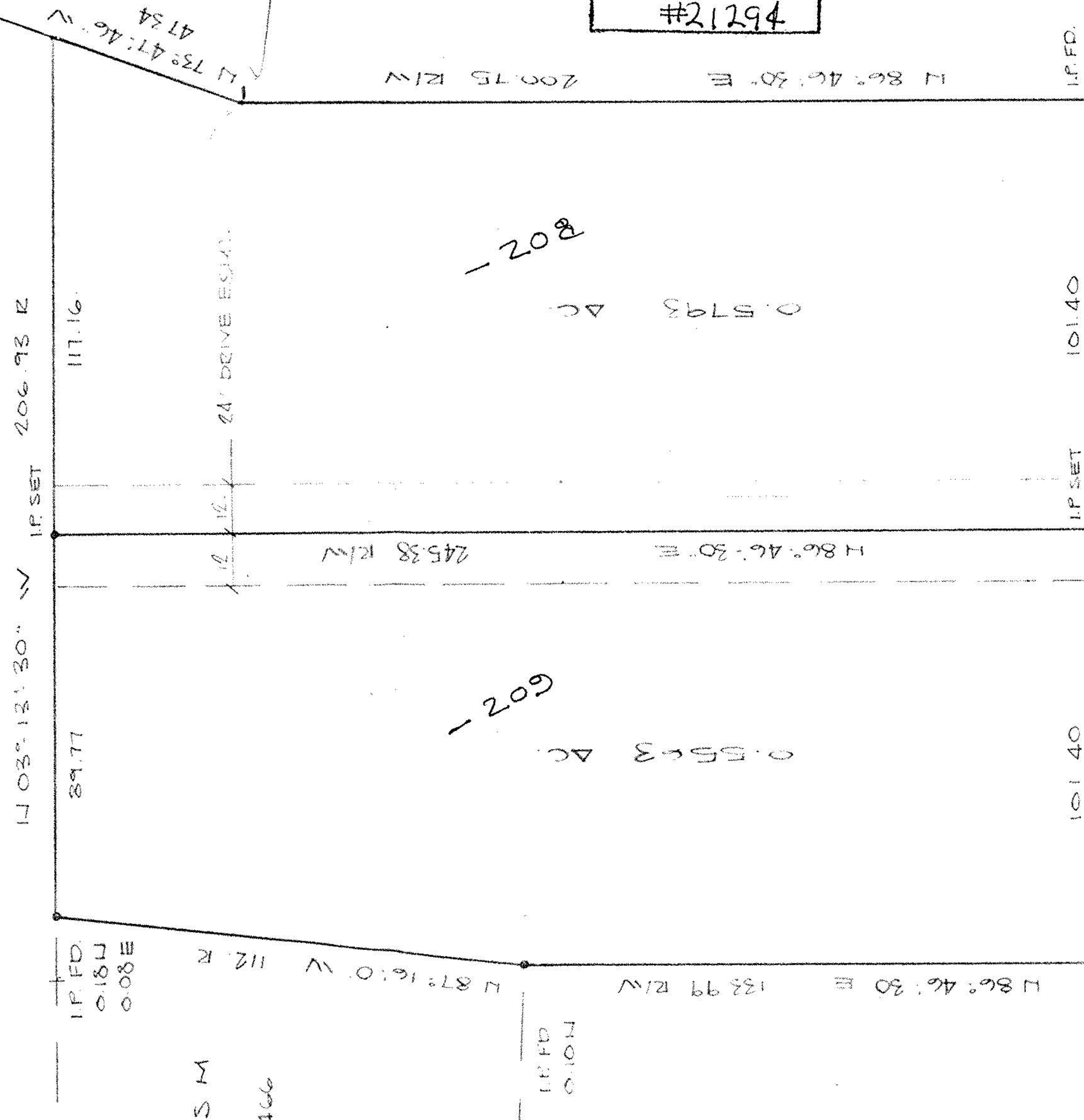


PREPARED FOR: MOULD DEVELOPMENT CO H RIDGEVILLE OH

PREPARED BY: HAPONEK & ASSOC ENGINEERS & SURVEYORS H RIDGEVILLE OH

HAROLD C. TERNES } NORTH PL } O.R VOL 356 P. 289

RODNEY H. & ALEXIS M LYLIK } O.R VOL 254 P. 466



NORTHEASTERLY CORNER TERNES



DATE: MARCH, 1995 SCALE: 1\"/>

APPROVED
LORAIN CO.
MAP DEPT
DATE 4-24-95
PAGE 6-126
BY CAROLYN FRANCIS
#21294

21294

2,496 sq ft

361.55 R

TERNES STREET DEDICATION PLAT VOL. 29 PGS 17-18

TERNES STREET 60'