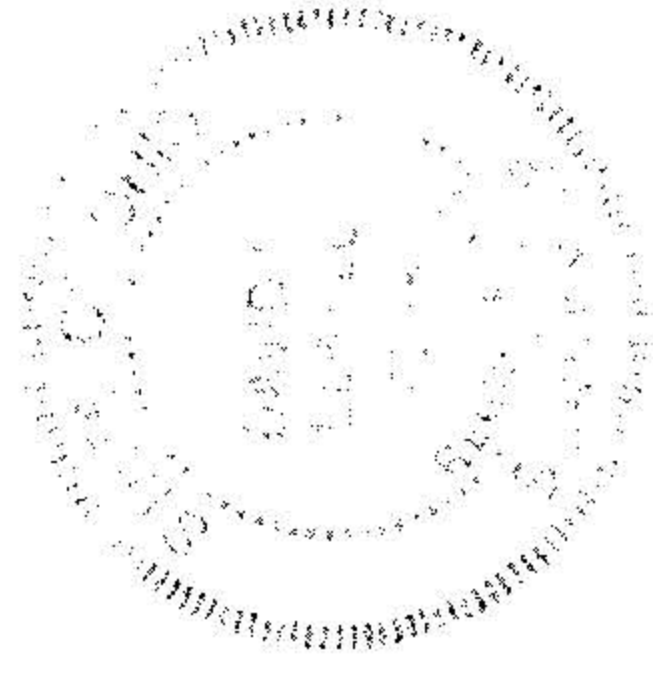


UPDATED & REVISED 10-10-91
 K&S ASSOCIATES INC.
 ENGINEERS
 SURVEYORS

Edward A. Prout
 REG. SURV. NO. 6333

1.0663 AC. PCL., 1.1357 AC. PCL., 25.437 AC. PCL.



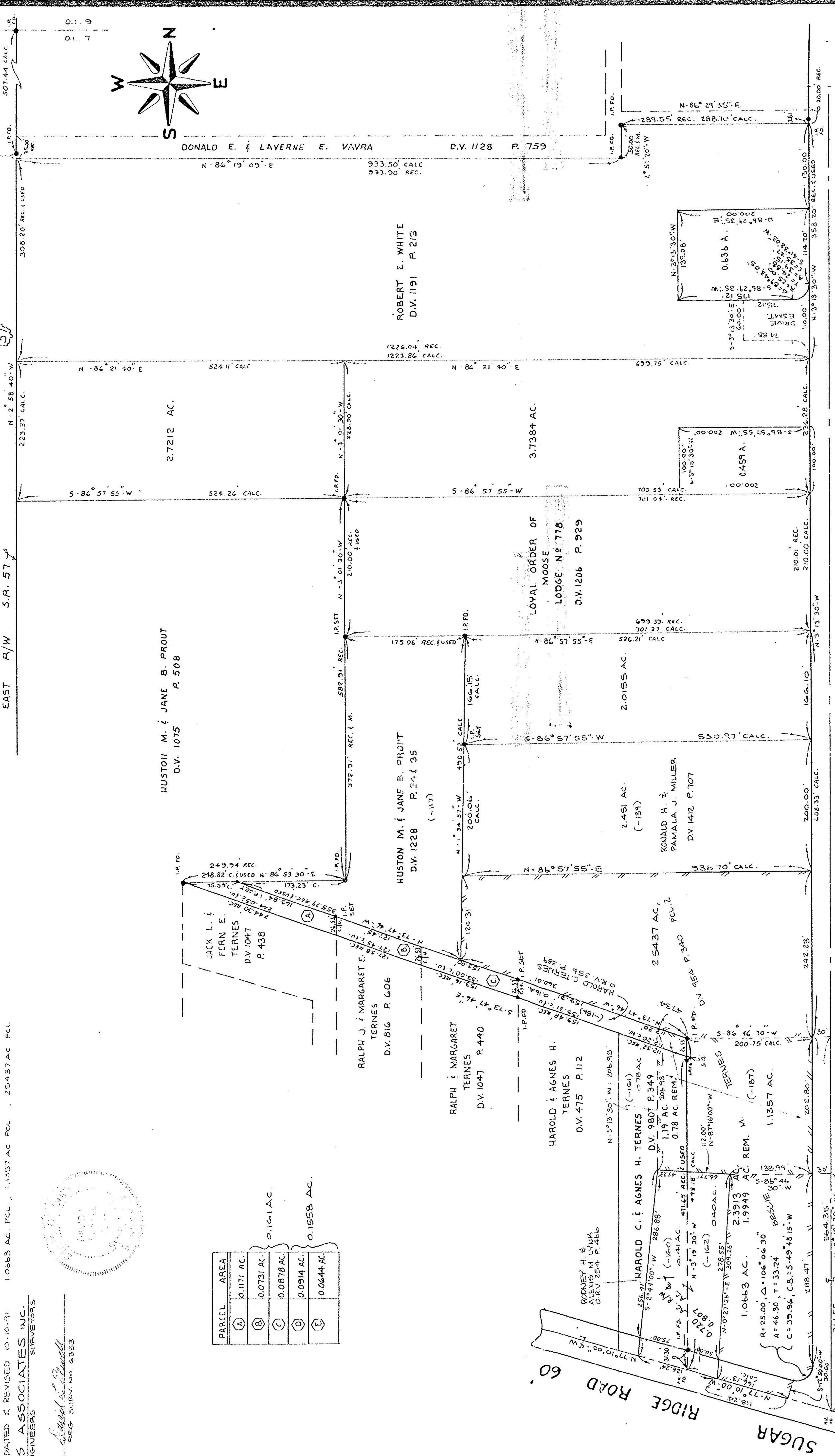
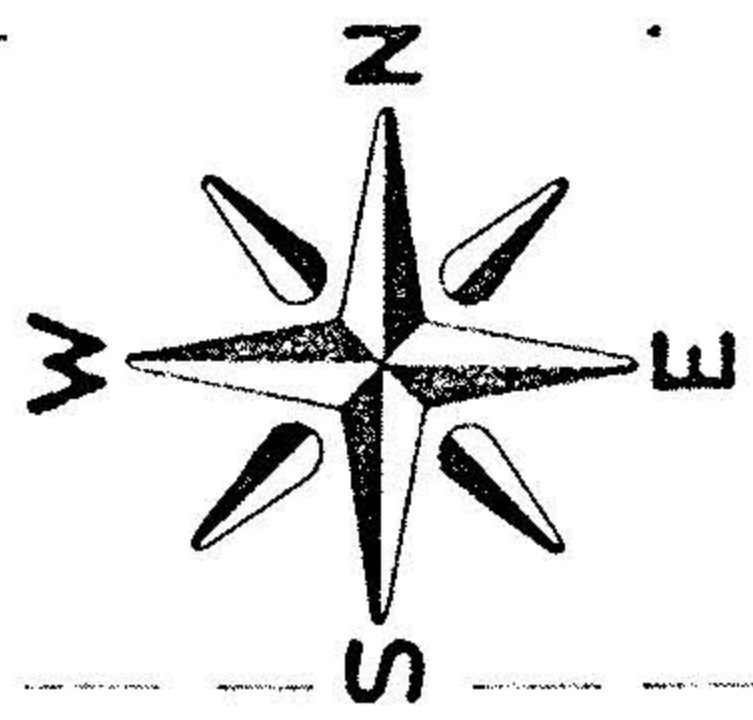
PARCEL	AREA
(A)	0.1171 AC.
(B)	0.0731 AC.
(C)	0.0878 AC.
(D)	0.0914 AC.
(E)	0.0644 AC.

0.161 AC.
 0.1558 AC.

57

EAST R/W S.R. 57

0.1. 9
 0.1. 7



P.V. 29 PP. 17-18

TERNES AVENUE 60'

60'

Δ = 90° W, 95°
 R = 25.00', T = 25.12'
 C = 25.94'
 C.B. = 2.1' S, 48° 21' 57" W

PROJECT
 BOUNDARY SURVEY
 OF PART OF
 ORIGINAL ELYRIA TOWNSHIP (EAST OF THE RIVER)
 LOT N° 7
 CITY OF ELYRIA, COUNTY OF LORAIN
 STATE OF OHIO

REV. 12-28-89
 REV. 1-02-89
 REV. 10-10-91

Prepared for:
HAROLD TERNES

Drawn by: K.V.S.

Checked by:

App. by:

Scale: 1" = 100'

Date: OCTOBER, 1979

REFERENCES

KLEINODER-SCHMIDT
 and ASSOCIATES

ENGINEERS — SURVEYORS — CONSULTANTS IN LAND PLANNING
 ELYRIA - NORWALK - MEDINA OHIO

SHEET NO. 1 of 1
 JOB NO. 72-97