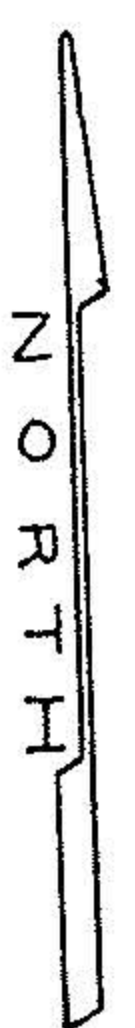


6-126

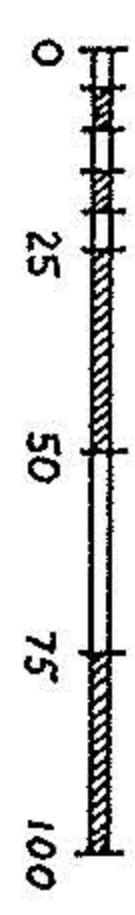
06-25-007-000

TERNES AVENUE

DEDICATED
P.V. 29 PP. 17 & 18



SCALE: 1" = 50'



BESSIE M. TERNES D.V. 954 P. 340 PCL. 2
(-140) 5.42 Ac. 5.02 Ac. REM.

TOTAL ACREAGE: 0.7200 Ac. TO R/W
0.8065 Ac. TO &

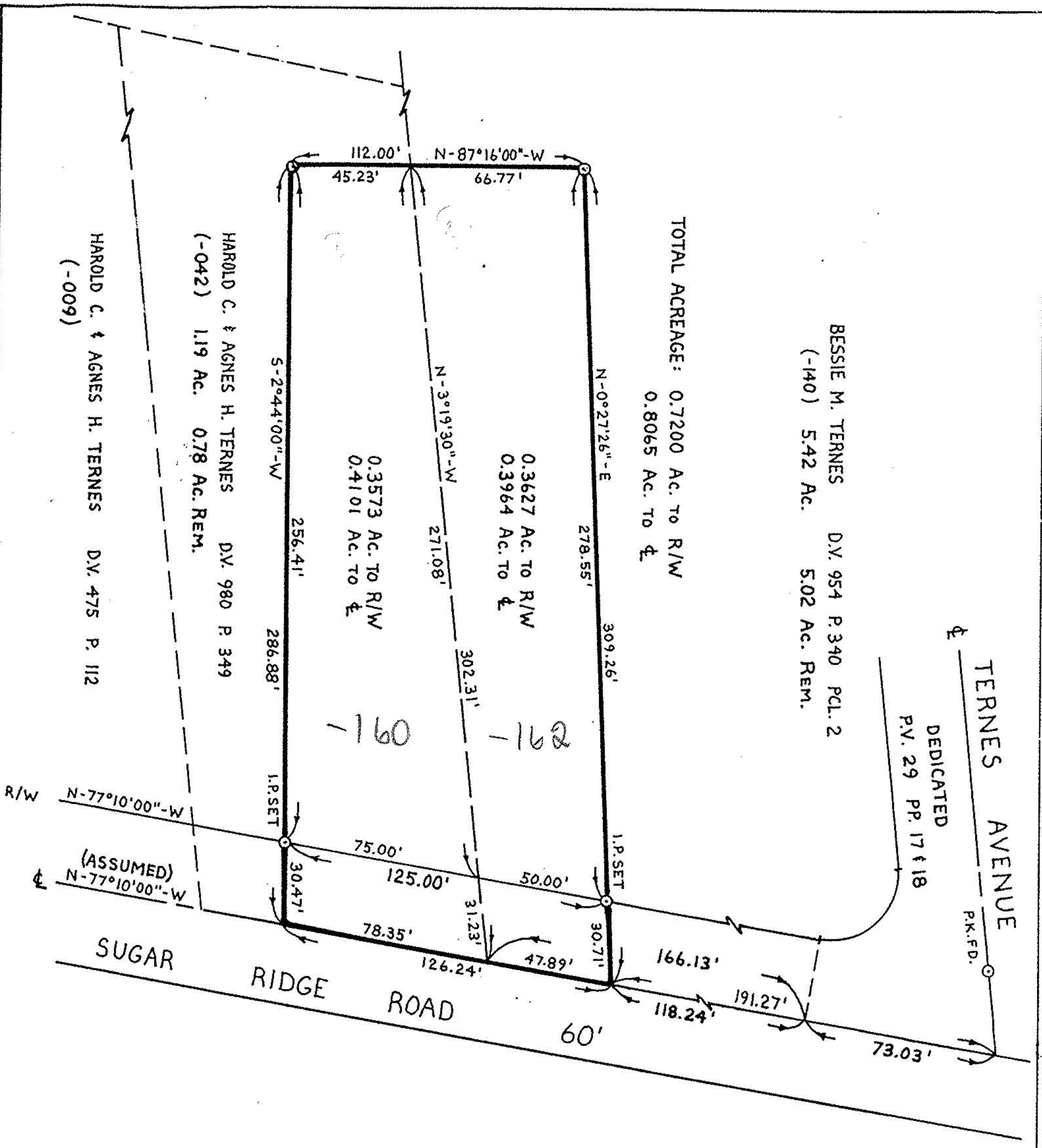
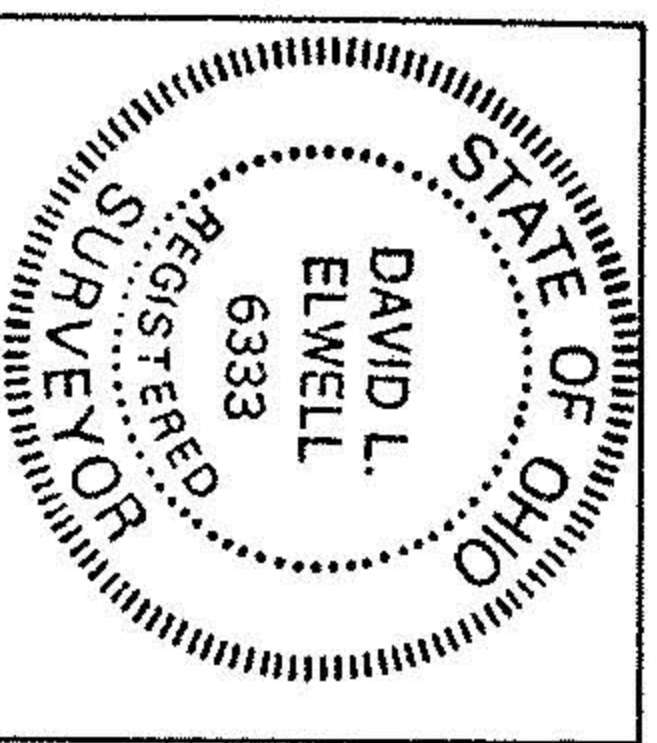
#18789	
APPROVED LORAIN CO. MAP DEPT.	
DATE	12-22-89
PAGE	6-126
BY	CAROLYN FRANCIS
VOID AFTER #	18789

SURVEY MAP

PART OF
ELYRIA TOWNSHIP
ORIGINAL LOT 7 EAST OF RIVER
CITY OF ELYRIA COUNTY OF LORAIN
STATE OF OHIO

PREPARED BY: KS ASSOCIATES INC.
ENGINEERS & SURVEYORS

David L. Elwell
DAVID L. ELWELL REG. SURV. # 6333



HAROLD C. & AGNES H. TERNES D.V. 980 P. 349
(-042) 1.19 Ac. 0.78 Ac. REM.
HAROLD C. & AGNES H. TERNES D.V. 475 P. 112
(-009)