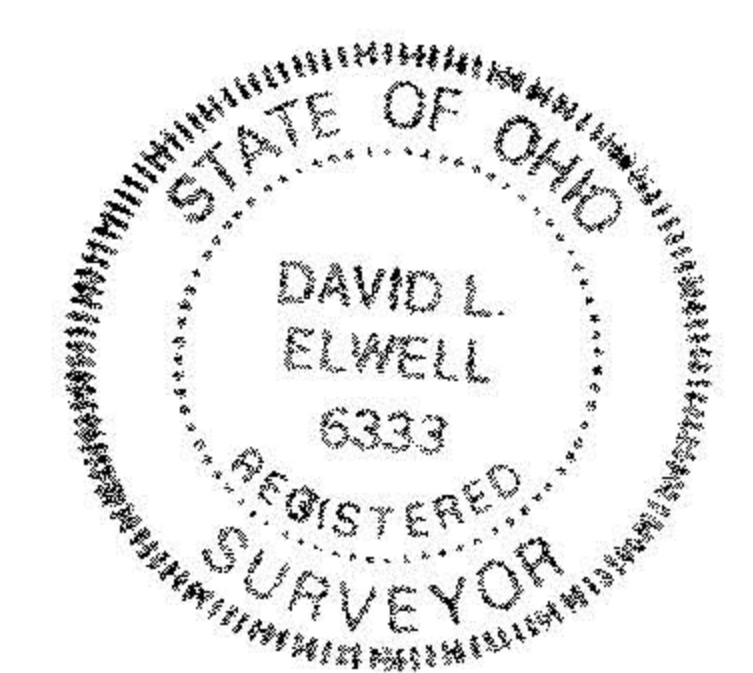


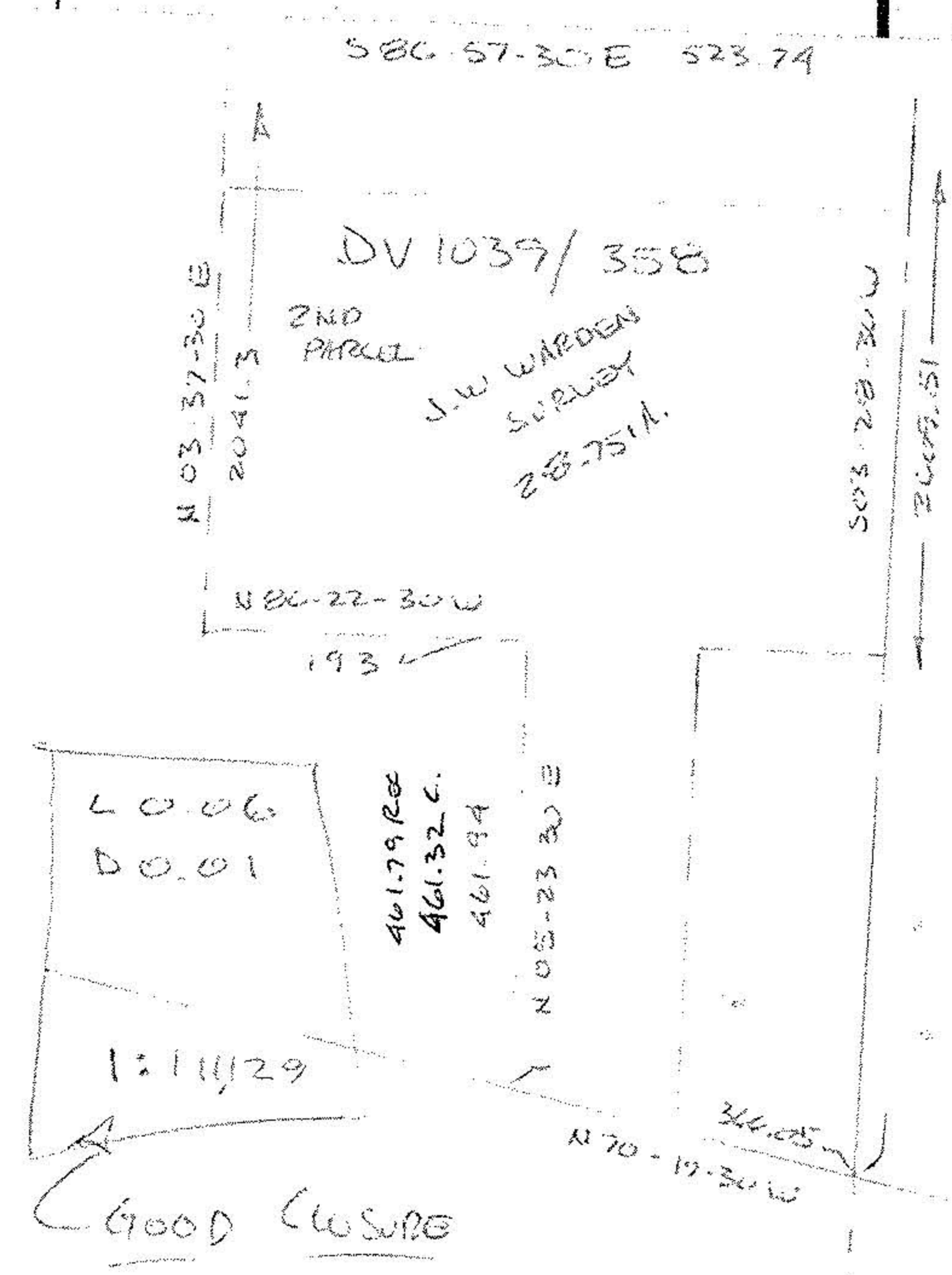
SURVEY MAP
 PART OF ORIGINAL ELYRIA TOWNSHIP
 LOT No. 7
 EAST OF BLACK RIVER
 CITY OF ELYRIA
 COUNTY OF LORAIN STATE OF OHIO

PREPARED BY:
KS ASSOCIATES INC.
 ENGINEERS SURVEYORS

David L. Elwell
 DAVID L. ELWELL
 REG. SURV. NO. 6333



PRINTED
 DEC 15 1994
 KS ASSOCIATES, INC.



1994
 94-523