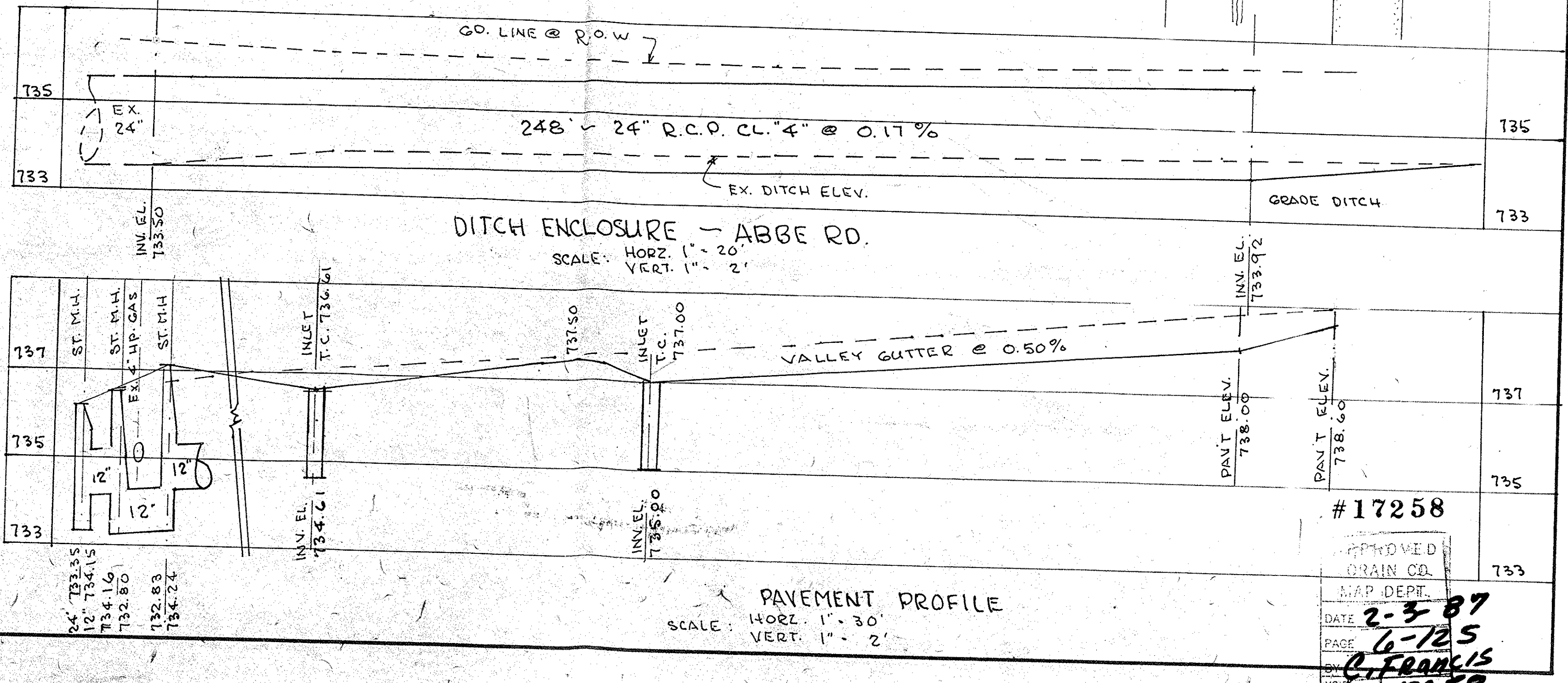


06-25-007-000



TOPOGRAPHICAL SURVEY
PART OF ELYRIA TOWNSHIP ORIGINAL LOT NO. 7 - E. OF R.
CITY OF ELYRIA COUNTY OF LOHAIN STATE OF OHIO
SCALE: 1" = 30'
MAY 31, 1984

PREPARED BY
KLEINODER-SCHMIDT & ASSOC.
CONSULTING ENGINEERS & SURVEYORS

#17258
APPROVED
DRAIN CO.
MAP DEPT.
DATE 2-3-87
PAGE 6-125
BY C. FRANKS
17258