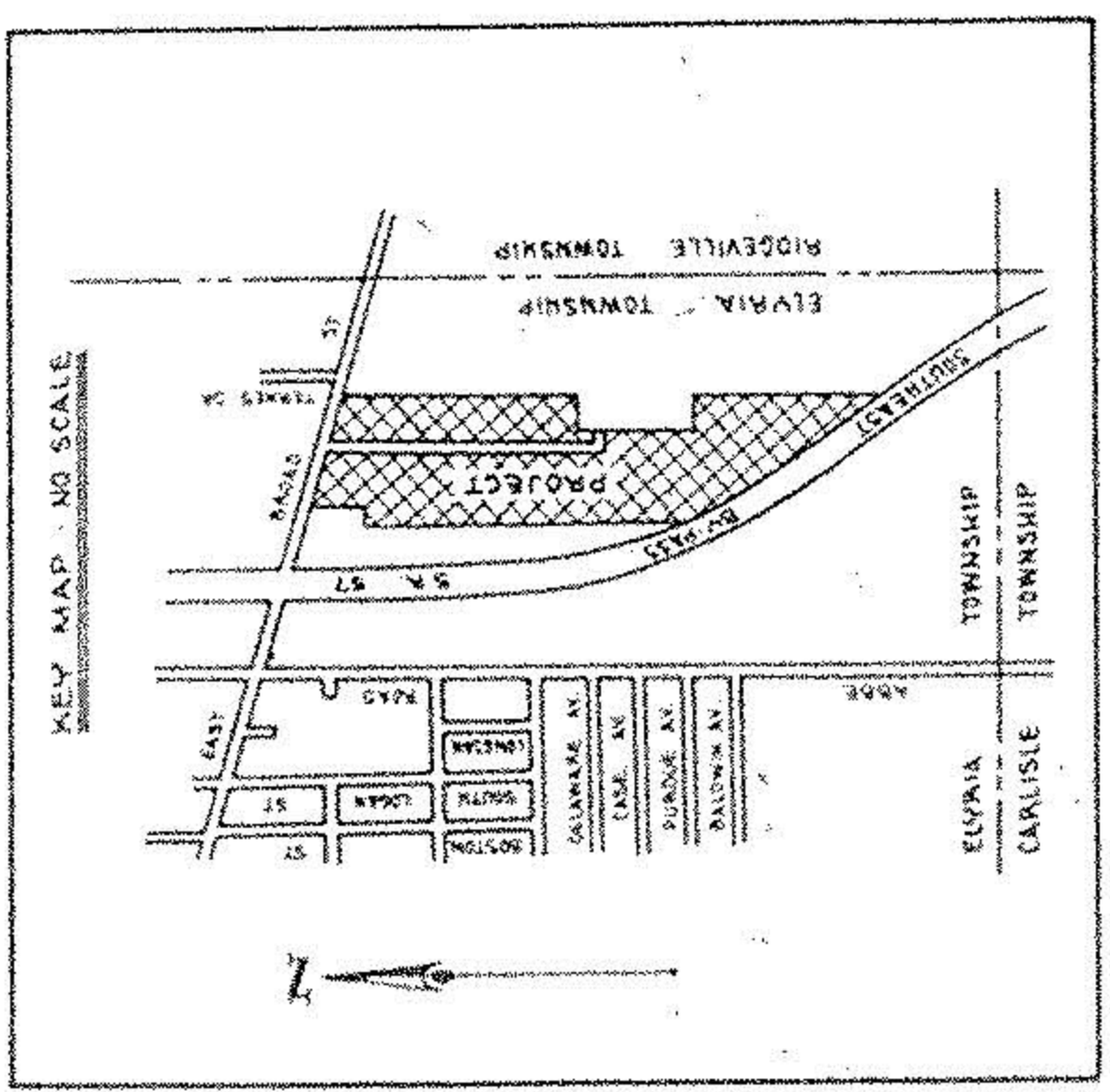
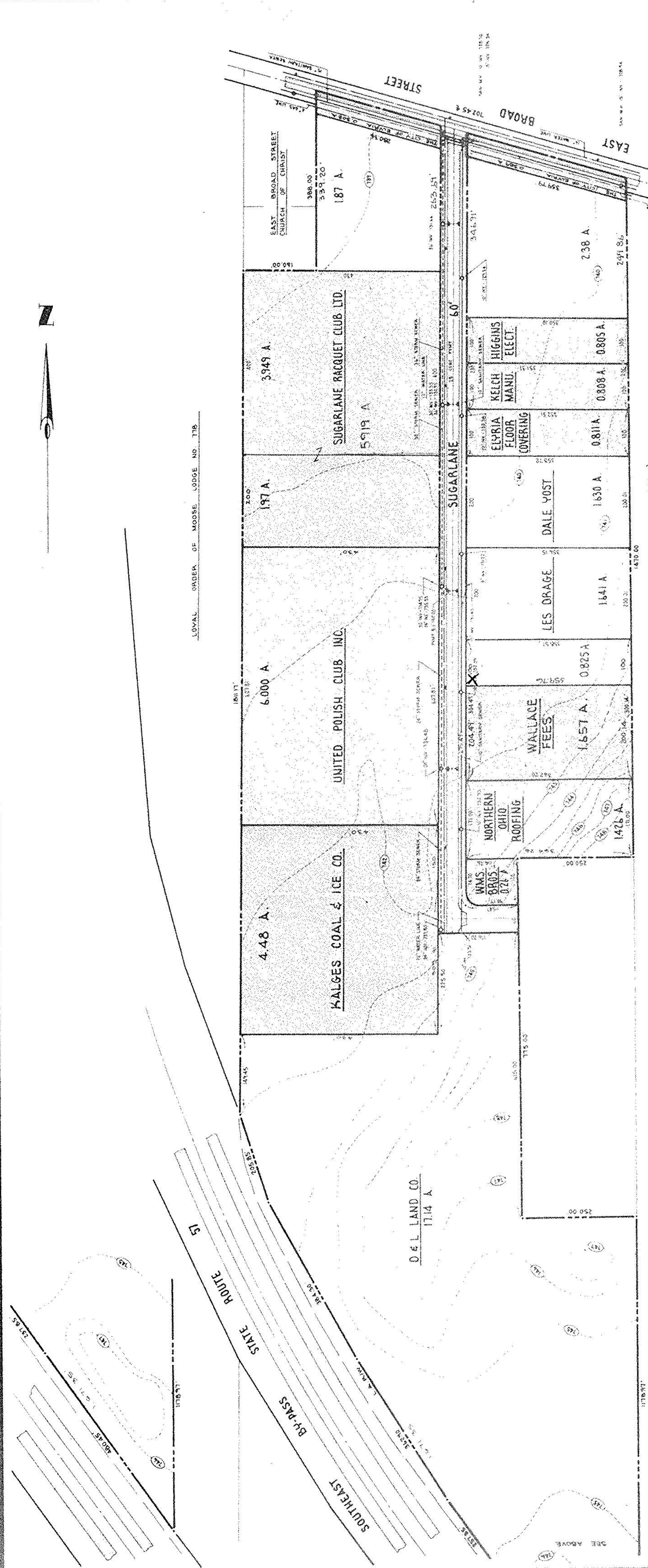


6-144
6-126

06-25-001-000
06-25-007-000



LOYAL ORDER OF MOOSE LODGE NO. 178



#17579

APPROVED	APPROVED
LORAIN CO.	LORAIN CO.
MAP DEPT.	MAP DEPT.
DATE 4-21-78	DATE 4-21-78
PAGE 6-144	PAGE 6-144
BY C.Y.	BY C.Y.
VOID AFTER	VOID AFTER
11579	11579

SUGARLANE
INDUSTRIAL PARK
ELYRIA OHIO
DEVELOPED BY:
DALE YOST & LES DRAGE

KLEINOEDER-SCHMIDT
and ASSOCIATES
ENGINEERS - SURVEYORS - CONSULTANTS IN LAND PLANNING
ELYRIA - NORWALK - MEDINA OHIO