

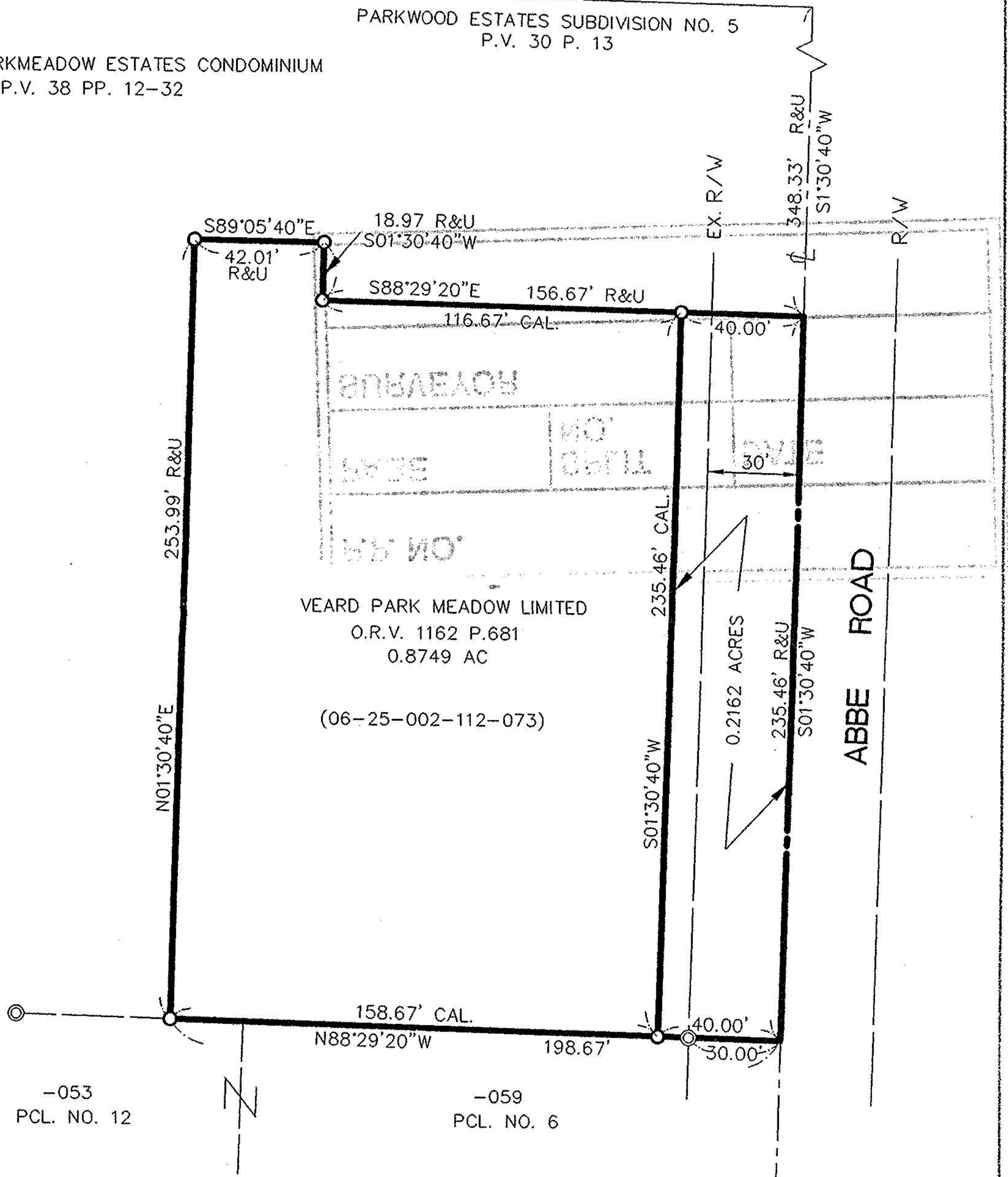
# SURVEY MAP

PART OF ORIGINAL ELYRIA  
TOWNSHIP LOT NO. 2  
EAST OF BLACK RIVER  
CITY OF ELYRIA  
COUNTY OF LORAIN  
STATE OF OHIO

## BOWLING GREEN CIRCLE 60' R/W

PARKWOOD ESTATES SUBDIVISION NO. 5  
P.V. 30 P. 13

PHASE IV PARKMEADOW ESTATES CONDOMINIUM  
P.V. 38 PP. 12-32



VEARD PARK MEADOW LIMITED  
O.R.V. 1162 P.681  
0.8749 AC  
(06-25-002-112-073)

#22123

APPROVED  
LORAIN CO.  
MAP DEPT.  
DATE 3-30-97  
PAGE 6-142  
BY R. Bell  
VOID AFTER # 22123

-053  
PCL. NO. 12

-059  
PCL. NO. 6

ELDEN PROPERTIES  
LIMITED PARTNERSHIP  
O.R.V.639 P.180

### LEGEND

- ⊙ - IRON PIN/PIPE FOUND
- - IRON PIN/PIPE SET
- R/REC - RECORD
- C/CAL - CALCULATED
- M - MEASURED

BASIS OF BEARINGS: S 01°30' 40" W ON THE  
CENTERLINE OF ABBE ROAD FROM RECORD PLAT  
PHASE IV PARKMEADOW ESTATES CONDOMINIUM  
AS RECORDED IN P.V. 38 P. 12 OF THE LORAIN  
COUNTY RECORD OF PLATS



SCALE IN FEET  
1" = 40'



*David L. Elwell*  
DAVID L. ELWELL, REG. SURVEYOR NO. 6333

KS ASSOCIATES, INC.

ENGINEERS/SURVEYORS  
424 Middle Avenue  
P.O. Box 89  
Elyria, Ohio 44036

