

# SURVEY MAP

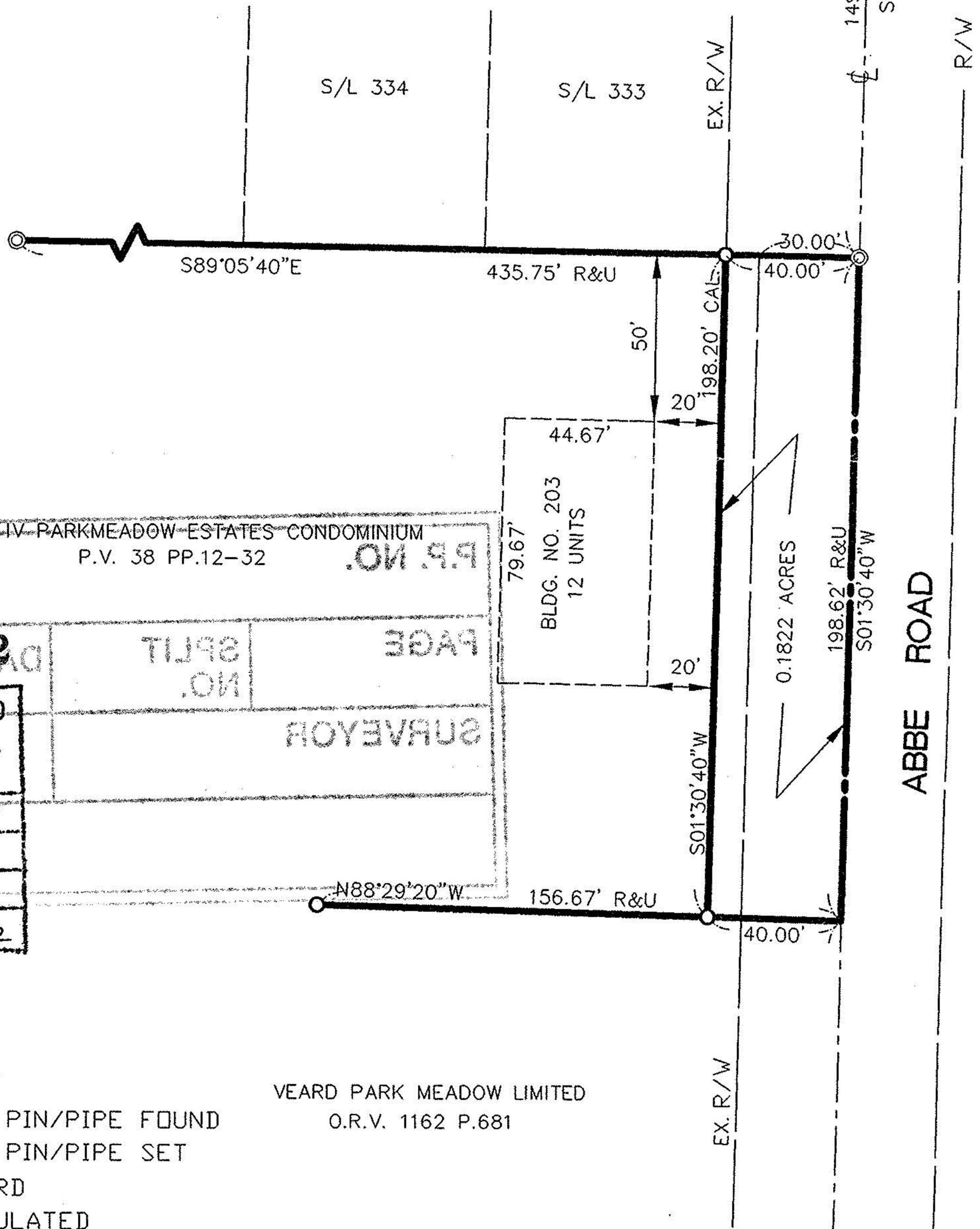
PART OF PHASE IV PARKMEADOW  
 CONDOMINIUM - P.V. 38 PP. 12-32  
 CITY OF ELYRIA  
 COUNTY OF LORAIN  
 STATE OF OHIO



## BOWLING GREEN CIRCLE 60' R/W

PARKWOOD ESTATES SUBDIVISION  
 NO. 5  
 P.V. 30 P.13

BEARINGS ARE ASSUMED  
 FROM P.V. 38 PP. 12-32



PHASE IV PARKMEADOW ESTATES CONDOMINIUM  
 P.V. 38 PP.12-32

#22122

APPROVED  
 LORAIN CO.  
 MAP DEPT.

DATE 4-3-97

PAGE 6-142

BY P. Bell

VOID AFTER # 22122

NO. 203

BLDG. NO. 203  
 12 UNITS

DATE

SPLIT

PAGE

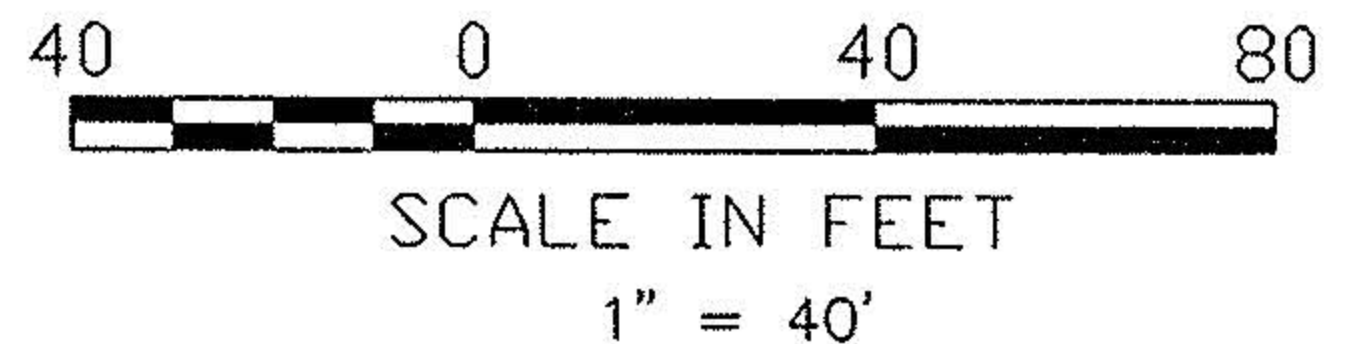
NO.

SURVEYOR

### LEGEND

- ⊙ - IRON PIN/PIPE FOUND
- - IRON PIN/PIPE SET
- R/REC - RECORD
- C/CAL - CALCULATED
- M - MEASURED

VEARD PARK MEADOW LIMITED  
 O.R.V. 1162 P.681



*David L. Elwell*  
 DAVID L. ELWELL, REG. SURVEYOR NO. 6333

KS ASSOCIATES, INC.  
 ENGINEERS/SURVEYORS  
 424 Middle Avenue  
 P.O. Box 89  
 Elyria, Ohio 44036

