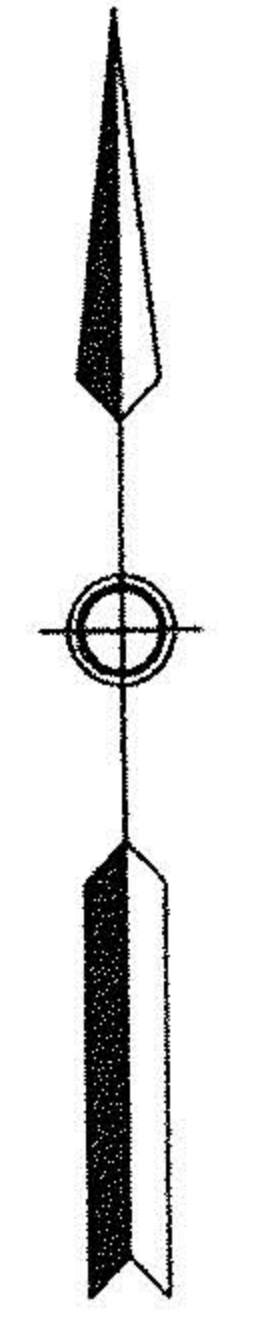
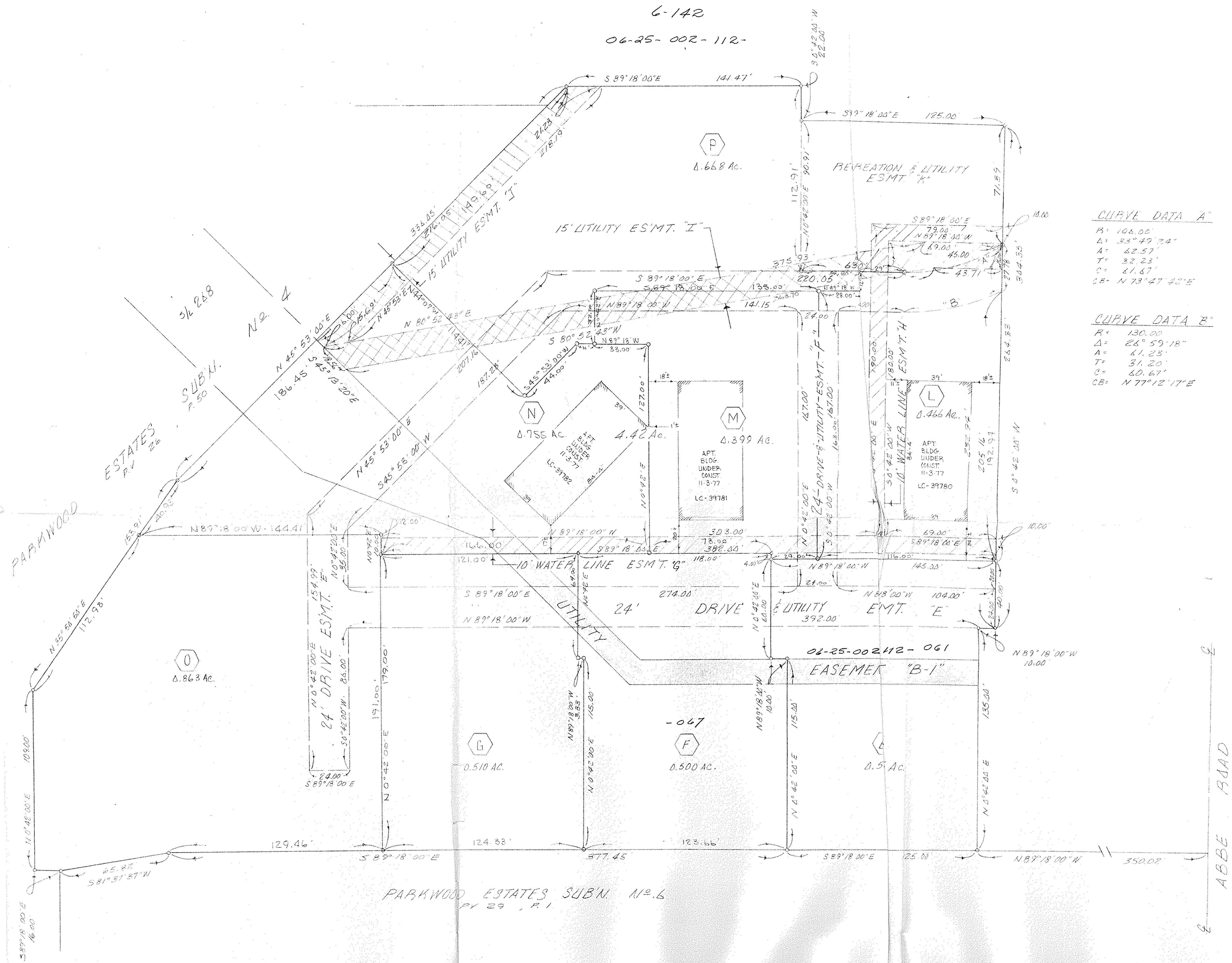


6-142
06-25-002-112-



SCALE: 1"=50'



CURVE DATA A'
 R = 108.00'
 Δ = 33° 49' 24"
 A = 62.57'
 T = 32.23'
 C = 61.67'
 CB = N 73° 47' 42" E

CURVE DATA B'
 R = 130.00'
 Δ = 26° 59' 18"
 A = 61.23'
 T = 31.20'
 C = 60.67'
 CB = N 77° 12' 17" E

PARKWOOD ESTATES SUB'N. NO. 6
 PY 29, P. 1

PARCEL AND EASEMENT MAP
PARK MEADOWS APARTMENTS
 PART OF ORIGINAL ELYRIA TOWNSHIP LOT NO. 2
 EAST OF THE BLACK RIVER
 CITY OF ELYRIA COUNTY OF LORAIN - STATE OF OHIO
 PREPARED BY: KLEINDEDER-SCHMIDT & ASSOC.
 CONSULTING ENGINEERS & SURVEYORS
 ELYRIA, OHIO

2. MORTGAGE LOAN IDENT. 11-3-77
 1. Rev. ADD. ESMT. "K"
 ESMT. "L"
 ESMT. TITLES } 6/3/77 D.Z.E.