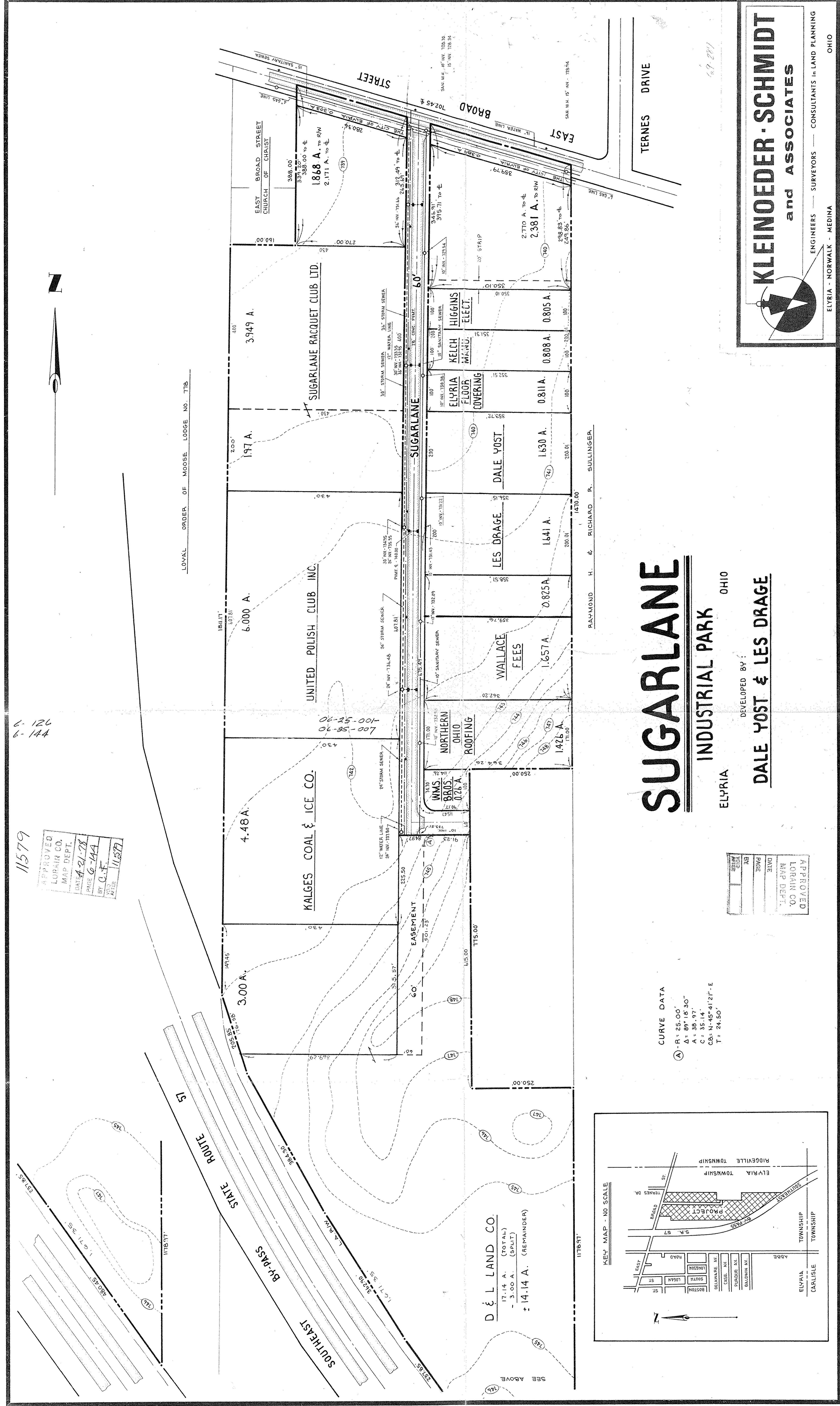


6-126  
6-144

11579

APPROVED  
LORAIN CO.  
MAP DEPT.  
DATE 4-21-78  
PAGE 6-144  
BY C.F.  
CHECKED AFTER 11/5/77

LOVAL ORDER OF MOOSE LODGE NO. 77B



06-85-007-000  
06-85-007-000  
6-144  
(25)

6-144  
6-126

# SUGARLANE

## INDUSTRIAL PARK

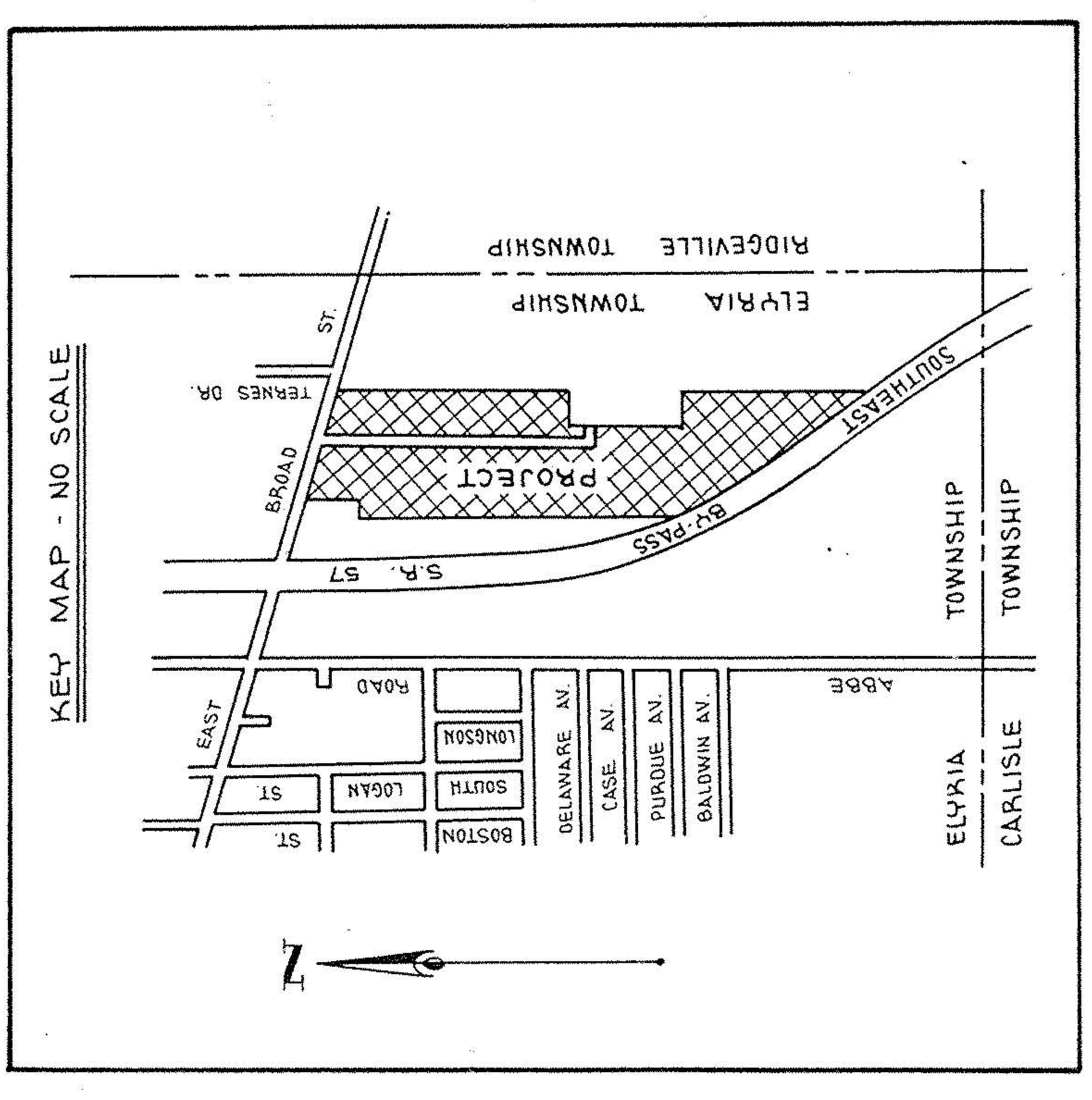
ELYRIA OHIO

DEVELOPED BY:  
**DALE YOST & LES DRAGE**

RAYMOND H. & RICHARD R. SULLINGER

CURVE DATA  
 (A) - R = 25.00'  
 Δ = 89° 18' 30"  
 A = 38.97'  
 C = 35.14'  
 CB = N-45° 41' 21" - E  
 T = 24.50'

D & L LAND CO.  
 17.14 A. (TOTAL)  
 - 3.00 A. (SPLIT)  
 ± 14.14 A. (REMAINDER)



DATE	APPROVED
PAGE	LORAIN CO.
BY	MAP DEPT.
CHECKED	
AFTER	

**KLEINOEDER-SCHMIDT**  
and ASSOCIATES

ENGINEERS SURVEYORS CONSULTANTS IN LAND PLANNING

ELYRIA - NORWALK - MEDINA OHIO