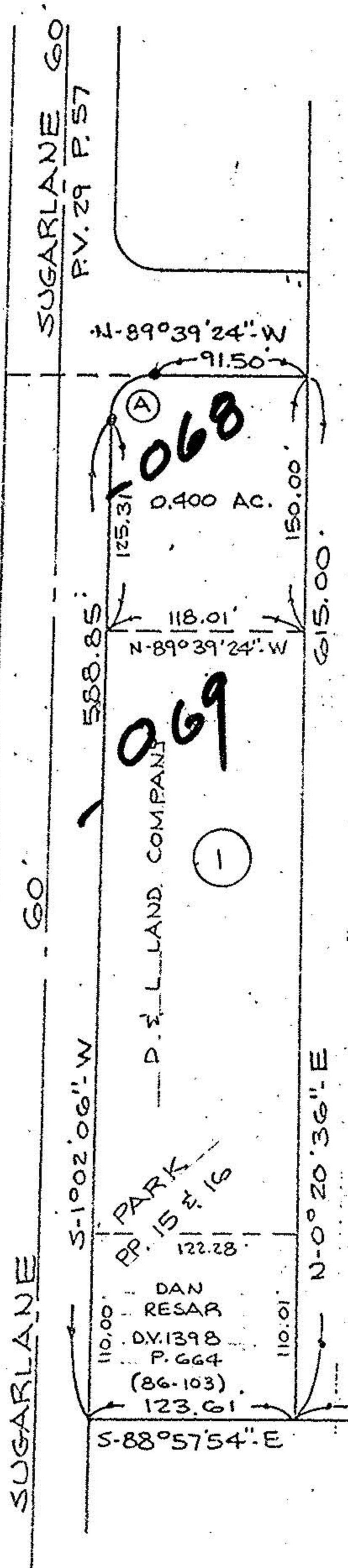


Sublot(s) PART OF NO. 1  
 Subd'n SUGARLANE INDUSTRIAL PARK

Township ELYRIA Tract E. OF BLACK RIVER  
 Orig. Lot(s) 1 Sec.             
 County of LORAIN State of Ohio  
 Corporation CITY OF ELYRIA

NORTH



(A) R = 25.00  
 T = 24.70  
 Δ = 89°18'30"  
 A = 38.97  
 C = 35.14  
 S = 45°41'21"-W

WILLIAM SCHNEIDER  
 D.V. 400 P. 398

#17207

APPROVED	
LORAIN CO.	
MAP DEPT.	
DATE	1-9-87
PAGE	6-144
BY	C.F.
VOID AFTER	17207

(12)  
 SUGARLANE INDUSTRIAL  
 P.V. 36

Prepared for: DALE YOST