



KLEINOEDER · SCHMIDT

and ASSOCIATES

ENGINEERS — SURVEYORS — CONSULTANTS IN LAND PLANNING

ELYRIA · HORWALK · MEDINA

OHIO

Sublot(s) PART OF NO. 1

Subd'n SUGARLANE INDUSTRIAL PARK

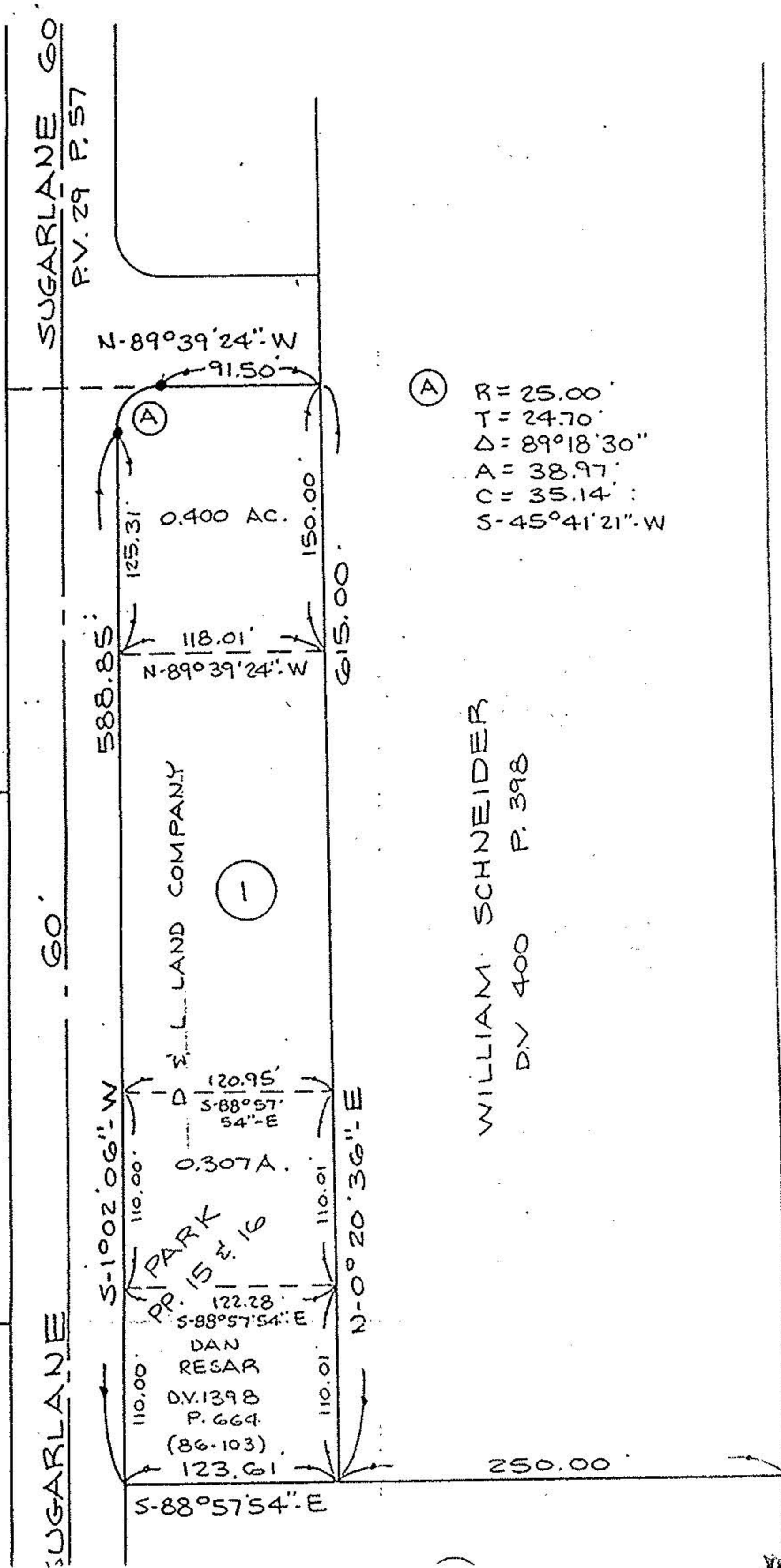
Township ELYRIA Tract E. OF BLACK RIVER

Orig. Lot(s) 1 Sec.

County of LORAIN State of Ohio

Corporation CITY OF ELYRIA

NORTH



(A) R = 25.00'
 T = 24.70'
 Δ = 89°18'30"
 A = 38.97'
 C = 35.14'
 S = 45°41'21" W

WILLIAM SCHNEIDER
 D.V. 400 P. 398

(12)
 INDUSTRIAL

#17333

APPROVED
 LORAIN CO.
 MAP DEPT.

DATE 3-17-87

PAGE 6-144

BY T. McMain

VOID
 AFTER

6-144

#17333

06-25-001-000