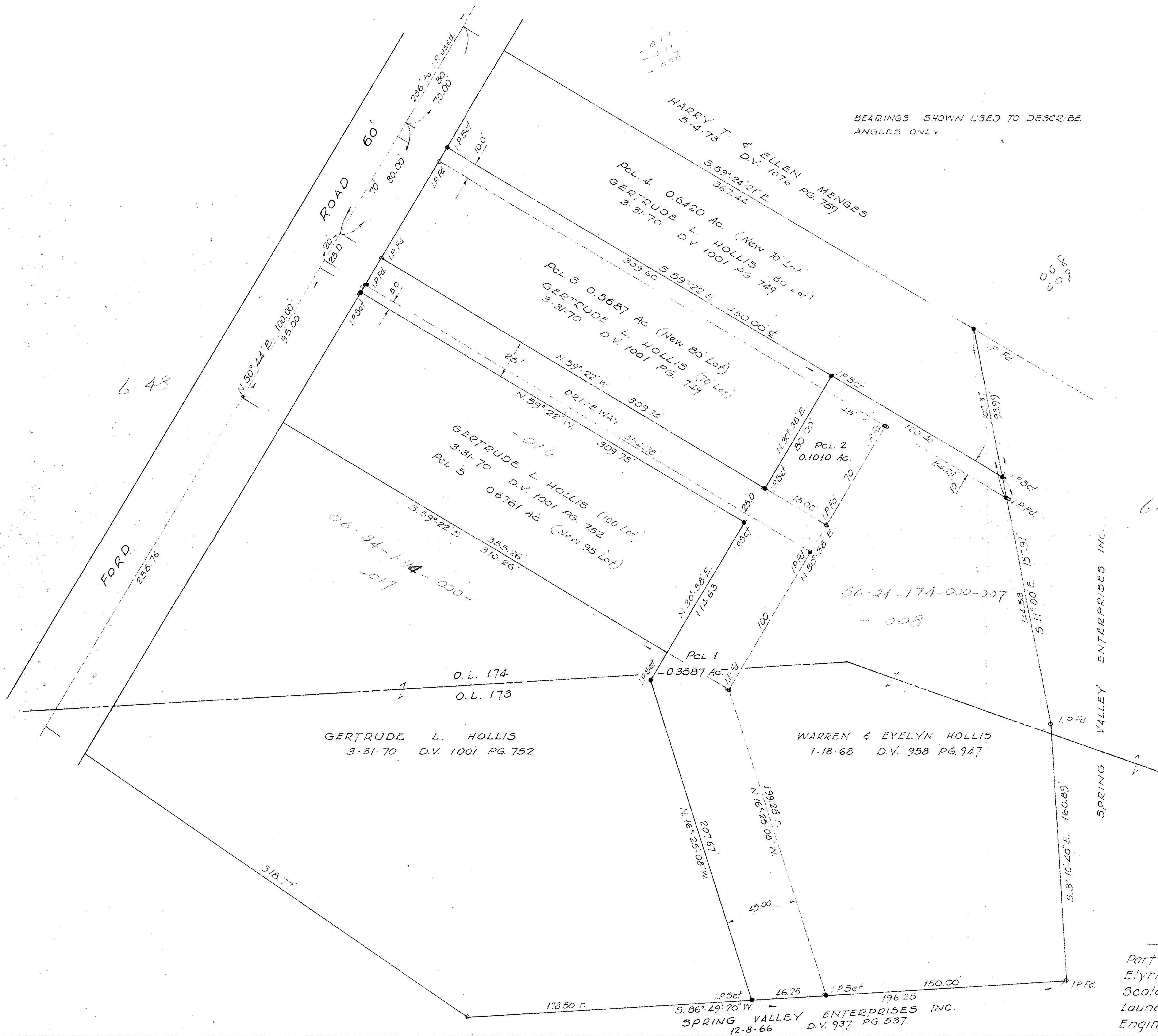


BEARINGS SHOWN USED TO DESCRIBE ANGLES ONLY.



6-43

6-49

FORD
238.76

GERTRUDE L. HOLLIS
3-31-70 D.V. 1001 PG. 752

WARREN & EVELYN HOLLIS
1-18-68 D.V. 958 PG. 947

SPRING VALLEY ENTERPRISES INC.
D.V. 937 PG. 537
12-8-66

SPRING VALLEY ENTERPRISES INC.

Survey for
Warren E. & Evelyn Hollis
Part of O.L.'s 173 & 174 West of Black River
Elyria Twp-City of Elyria-Lorain Co.-Ohio
Scale 1"=40' June, 1975
Laundon-Simon-Cahl and Assoc.
Engineers Surveyors Job. No 75-400

JUN 24 1975