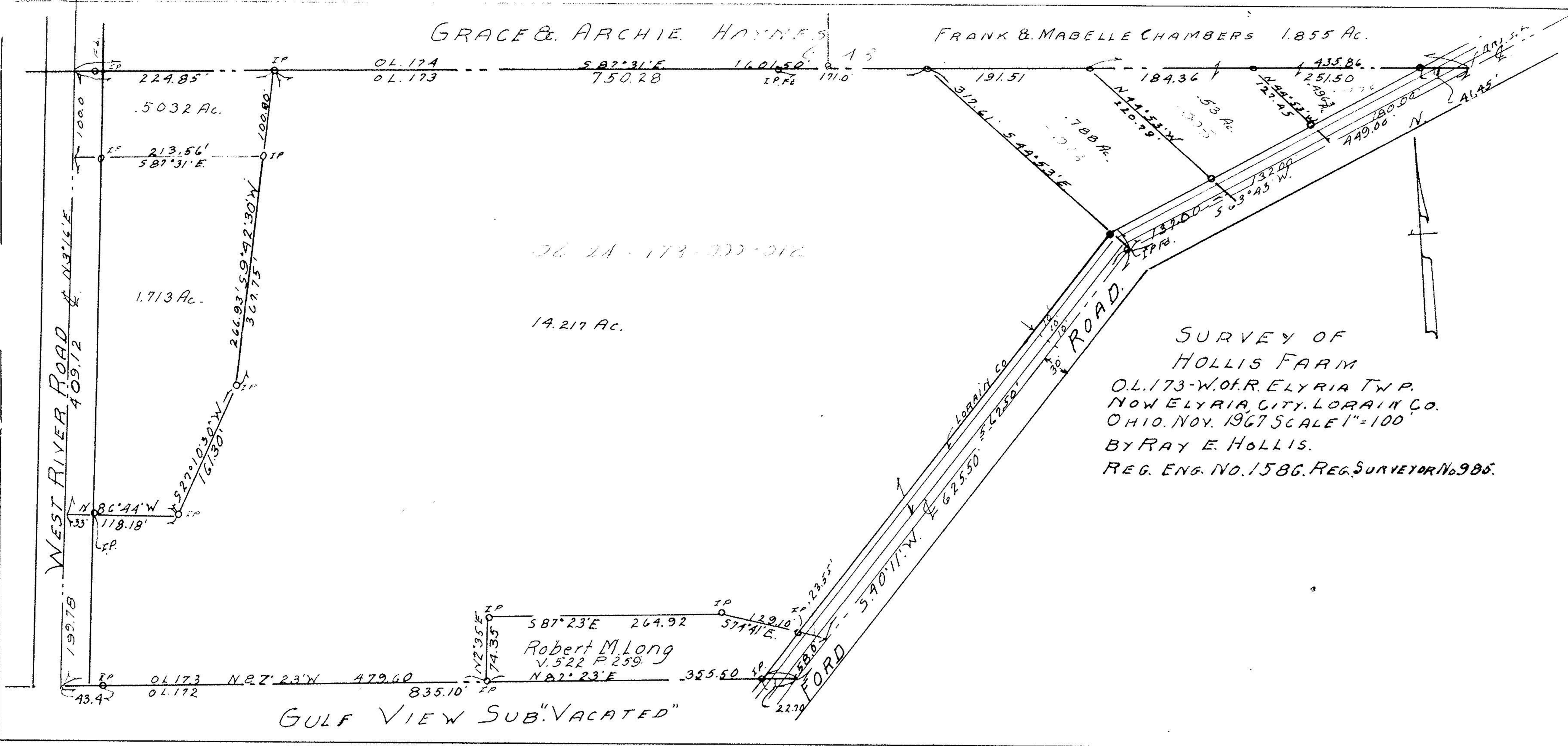


GRACE & ARCHIE HAYNES

FRANK & MABELLE CHAMBERS 1.855 Ac.



OL. 174
 OL. 173
 S 87° 31' E 750.28
 1601.50
 I.P.F.E. 171.0

.5032 Ac.

213.56'
 587° 31' E

1.713 Ac.

266.93' 59° 42' 30" N
 367.75'

86° 44' W
 118.18'

OL. 173 N 82° 23' W 479.60
 OL. 172 835.10'

26 2A - 173 - 300 - 012

14.217 Ac.

Robert M. Long
 V. 522 P. 259

GULF VIEW SUB. VACATED

SURVEY OF
 HOLLIS FARM
 O.L. 173 - W. OF R. ELYRIA TWP.
 NOW ELYRIA, CITY, LORAIN CO.
 OHIO. NOV. 1967 SCALE 1" = 100'
 BY RAY E. HOLLIS.
 REG. ENG. NO. 1586. REG. SURVEYOR No. 985.

