

S-55°20'-E

116.4

6-24-136

#6

0.318 A.  
-008

$$63 \cos 0^{\circ}53' = 62.99$$

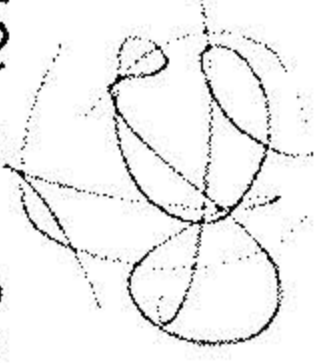
$$62.99 \sec 4^{\circ}05' = 63.15$$

$$3.00 \tan 0^{\circ}53' = 0.05$$

$$3.00 \tan 4^{\circ}05' = \frac{0.21}{0.26}$$

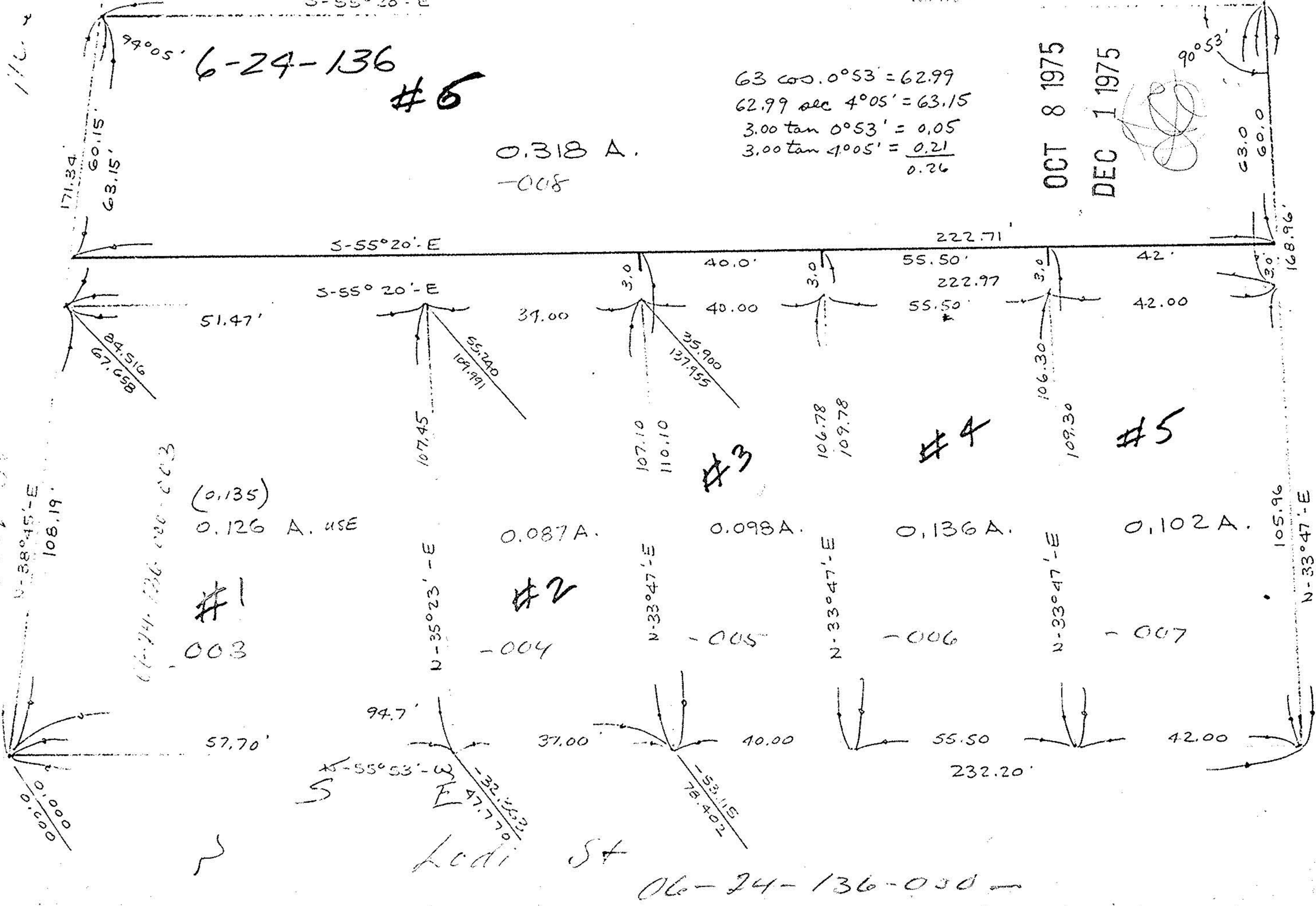
OCT 8 1975

DEC 1 1975



63.0  
60.0

168.96



116.4

N-38°45'-E  
108.19'

6-24-136-003

(0.135)  
0.126 A. USE

#1  
003

N-35°23'-E

0.087 A.

#2  
-004

N-33°47'-E

0.098 A.

#3  
-005

N-33°47'-E

0.136 A.

#4  
-006

N-33°47'-E

0.102 A.

#5  
-007

105.96  
N-33°47'-E

Lodi St

06-24-136-030