

BOUNDARY SURVEY

PART OF ELYRIA TOWNSHIP ORIGINAL LOTS NOS 11, 95, & 96

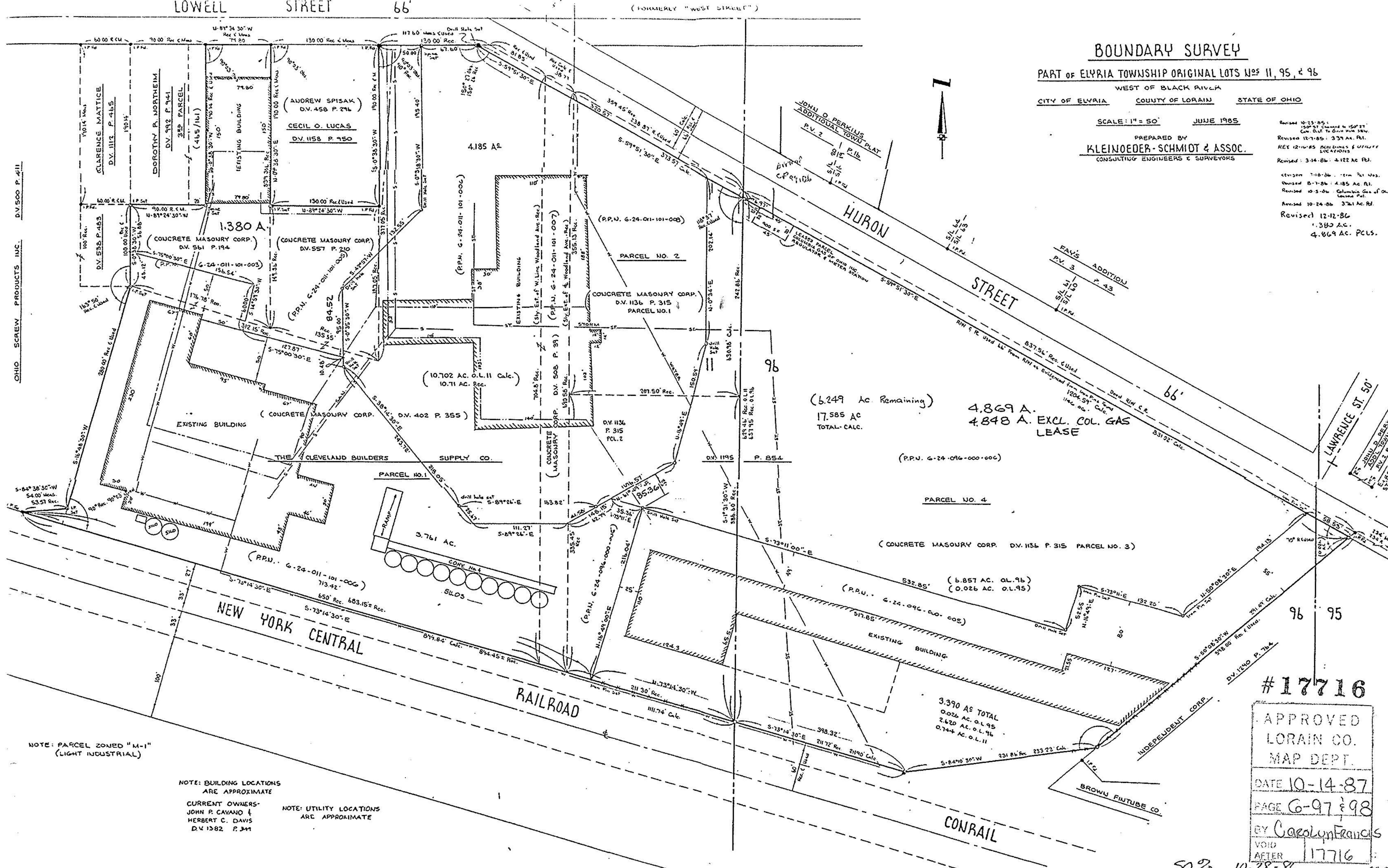
WEST OF BLACK RIVER

CITY OF ELYRIA COUNTY OF LORAIN STATE OF OHIO

SCALE: 1" = 50' JUNE 1985

PREPARED BY
KLEINODER-SCHMIDT & ASSOC.
CONSULTING ENGINEERS & SURVEYORS

Revised 10-25-85: 150' x 150' Contour Map
 Cont. Dist. To Contour Map
 Revised 12-7-85: 337 AC. P.L.
 KEY 12-10-85: PARCELS & UTILITIES LOCATIONS
 Revised: 3-14-86: 4122 AC. P.L.
 Revision 7-18-86: 150' x 150' Contour Map
 Revised 8-7-86: 4185 AC. P.L.
 Revised 10-3-86: Columbus Geo. of Ohio Contour Map
 Revised 10-24-86: 3761 AC. P.L.
 Revised 12-12-86: 1380 AC.
 4,869 AC. P.C.L.S.



(6,249 Ac Remaining)
 17,585 AC
 TOTAL-CALC.
 4,869 A.
 4,848 A. EXCL. COL. GAS LEASE

#17716

APPROVED
 LORAIN CO.
 MAP DEPT.

DATE 10-14-87

PAGE 6-97 of 98

BY Carolyn Francis

VOID AFTER 17716

50% 10-28-96