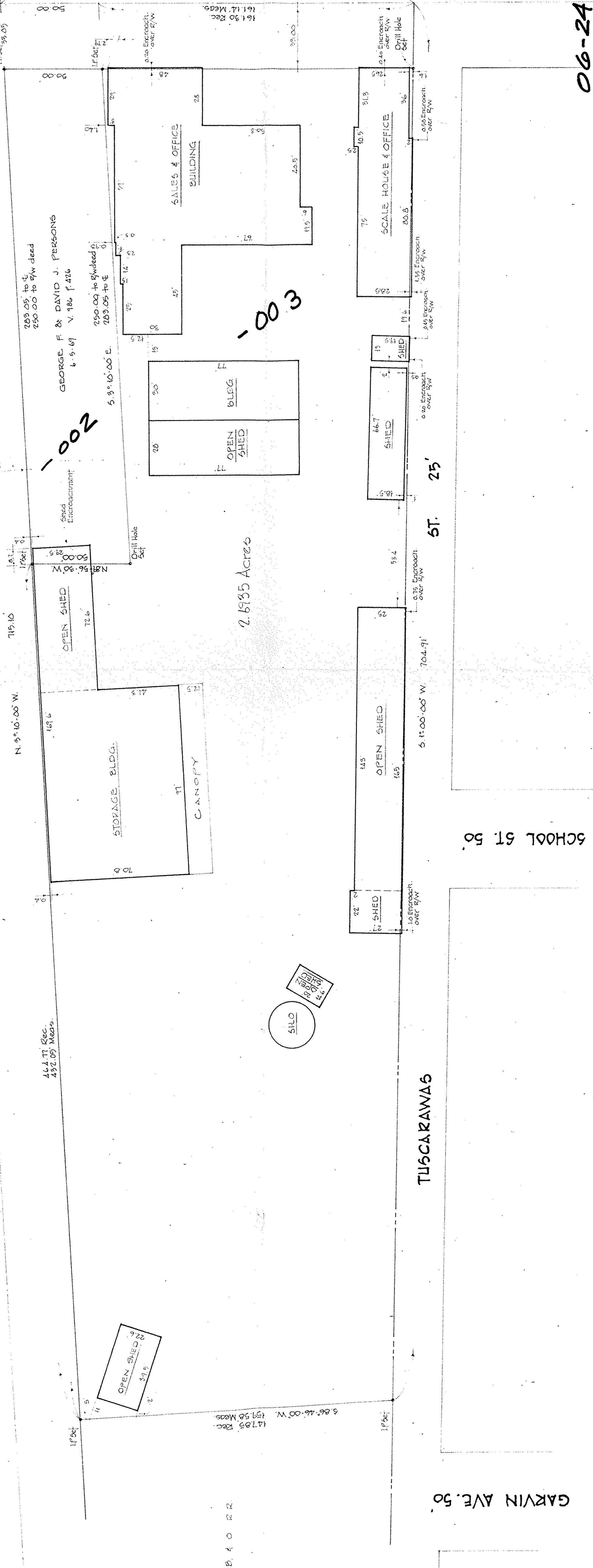


BALTIMORE & OHIO R.R. 66'

EAST RAILROAD ST.

LOWELL ST. 69'

06-24-088-000



SURVEY FOR THE

ELYRIA SAVINGS & TRUST NATIONAL BANK

PART OF O.L. 88 WEST OF BLACK RIVER OF ELYRIA TWP.
 COUNTY OF LORAIN STATE OF OHIO

SCALE 1" = 30'
 DEC. 31, 1986
 LAJUNDOON, SIMON, CAHL & ASSOC. INC.
 ENGINEERS SURVEYORS
 JOB NO. 86-1548

17305
 APPROVED
 LORAIN CO.
 MAP DEPT.
 DATE 3-3-87
 PAGE 6-99
 BY OFFICERS
 JOHN
 ASST. 17305
 708