

06-24-084-103-0
06-24-085-103

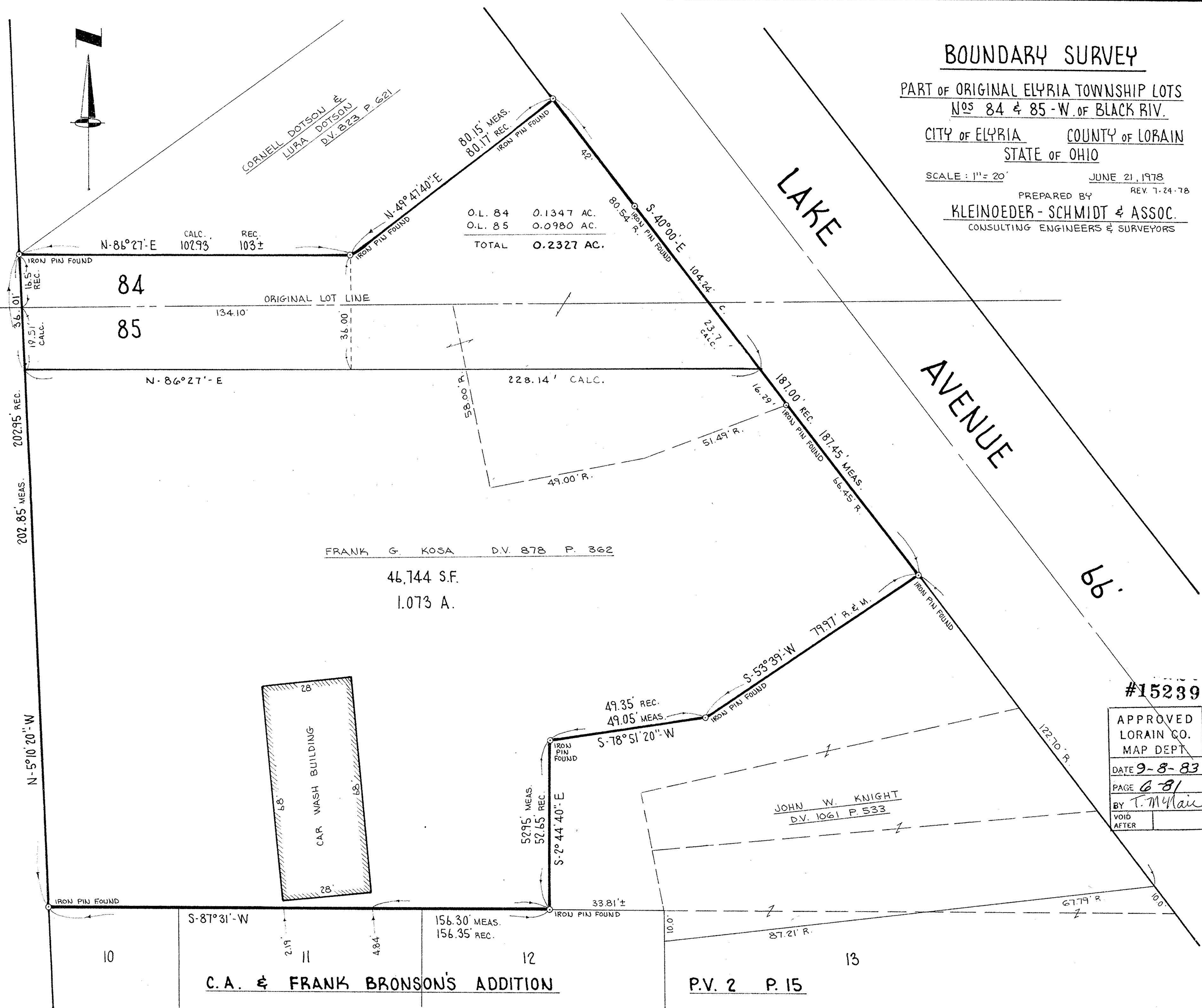
BOUNDARY SURVEY

PART OF ORIGINAL ELYRIA TOWNSHIP LOTS
NOS 84 & 85 - W. OF BLACK RIV.
CITY OF ELYRIA COUNTY OF LORAIN
STATE OF OHIO

SCALE: 1" = 20' JUNE 21, 1978
REV. 7-24-78

PREPARED BY
KLEINODER-SCHMIDT & ASSOC.
CONSULTING ENGINEERS & SURVEYORS

BALTIMORE & OHIO RAILROAD



#15239
APPROVED
LORAIN CO.
MAP DEPT.
DATE 9-8-83
PAGE 681
BY T. McNeil
VOID AFTER

C.A. & FRANK BRONSON'S ADDITION

P.V. 2 P. 15